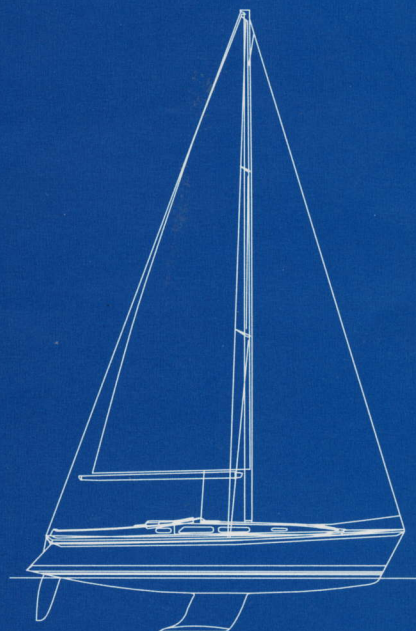


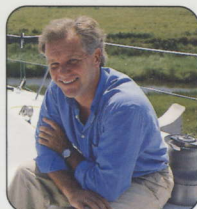


# Ocean 33

*Safe, comfortable performance sailing*







***"The Ocean 33 is a modern ocean-going cruising yacht,  
designed to be fast, comfortable and supremely seaworthy"***

*Ed Dubois*

Designed by the renowned Ed Dubois, the remarkable new Ocean 33 is an aft cockpit cruising yacht that combines sprightly sailing performance with the exceptional interior spaciousness that is so much a part of Westerly's much admired cruising style.

# 33

The Ocean 33 is a performance cruiser with an excellent turn of speed both upwind and downwind, and is easily managed single-handed.

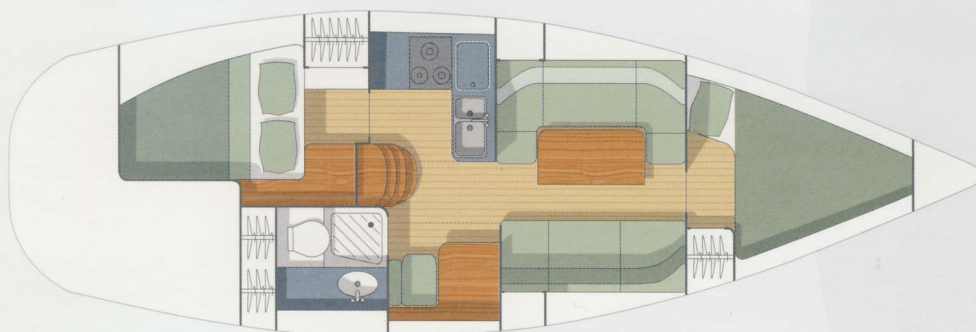
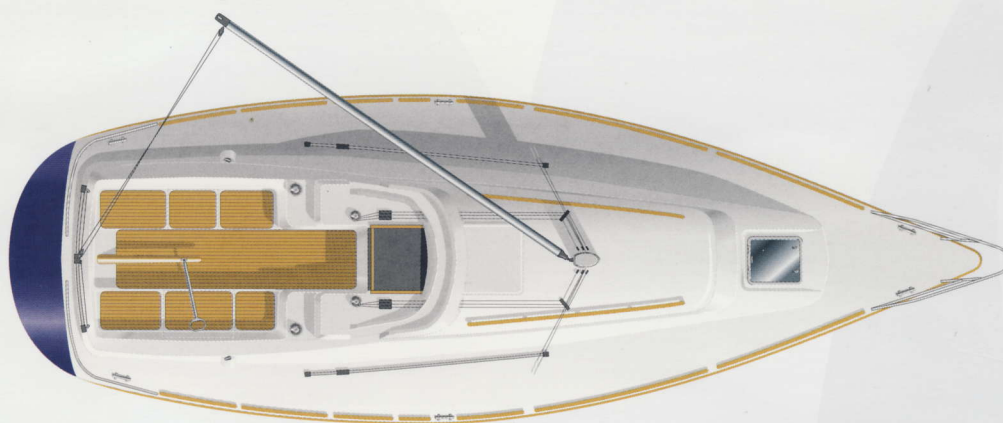
sufficient volume to ensure a well-balanced hull when reaching. And the powerful stern is designed to extend the sailing length as far as possible.

Building on its combined knowledge of fast racing and luxury cruising craft, Ed Dubois' team has designed a hull that is stiff, powerful and well-balanced. The relatively fine entry at the waterline gives the Ocean 33 excellent windward ability, while the topside sections in the bow give good reserve buoyancy and

Offering such performance as well as comfortable cruising, the Ocean 33 demonstrates Westerly's modern style while retaining the company's traditional values of craftsmanship and luxury.

Large enough to cruise with six people and all their gear, the Ocean 33 offers a surprisingly roomy interior, furnished to the familiar high standard of quality associated with all Westerly yachts, but with an interesting new interpretation.

Accommodation includes the main saloon, which offers good headroom and features a substantial chart table, and fore and aft cabins that feel equally spacious. The aft head has full standing room and also provides handy separate wet locker stowage. And, of course, as each Westerly is built to order you also have the opportunity to choose from a selection of materials, fabrics and wood finishes to create an interior of your own distinctive style.



### Specifications

#### Ocean 33

Length overall	33'4"	10.15 m
Length waterline	28'3"	8.6 m
Beam	11'2"	3.4 m
Draft – fin	5'6"	1.68 m
– twin	4'0"	1.22 m
Mast height (above waterline)	51'7"	15.56 m
Displacement	11,684 lb	5,000 kg
Ballast – fin	4,491 lb	2020 kg
– twin	4,961 lb	2250 kg
Engine	20 hp diesel (saildrive)	

#### Sail areas

Mainsail	275 sq ft	25.56 m <sup>2</sup>
Furling Genoa	459 sq ft	42.66 m <sup>2</sup>



## Ocean 33 – Key Features

### Hull

Hand laminated GRP with double white isophthalic gelcoat and trim line in your choice of colour. Teak rubbing strake gives a traditional feel while providing practical protection against damage.

### Keel

A modest draft, low C of G fin keel for optimum performance or twin keels for shallower draft and ability to dry out.

### Transom

A bathing platform and fold down boarding ladder make swimming easy and are essential safety features.

### Cockpit

All sail handling is done from the safety of the deep cockpit with self tailing winches located well inboard and the mainsheet traveller safely sited behind the helmsman. Teak seats finish off with style, and a huge cockpit locker takes all the gear that the modern cruising family needs.

### Deck

A non slip finish, abundance of handrails and wide uncluttered side-decks allow safe movement on deck, and features such as a double bow roller and spring cleats usually only found on larger yachts are standard on the Ocean 33.

### Sails

A furling genoa is standard as well as a slab reefing mainsail, and options such as a cruising chute or spinnaker have been thought out in advance and require no extra deck hardware. All lines are led back to the safety of the cockpit.

### Electrical System

Two low maintenance batteries provide ample power through a changeover isolator for engine starting and domestic needs. A comprehensive switch panel is protected by circuit breakers and includes battery monitoring gauges. As well as a full set of navigation lights there is even a deck floodlight fitted as standard.

### Instruments

As well as the standard compass, echo sounder and log, there is plenty of room at the chart table or in the instrument pod above the hatch for your individual choice of extra electronics.

### Engine

A 20hp freshwater cooled diesel saildrive is fitted in a sound deadened engine box with easy access for maintenance – there is even an engine bay lamp.

### Water System

Pressurised hot and cold water are standard at the galley and in the heads compartment where there is a washbasin and a proper pump out shower.

### Interior

All woodwork is in a choice of oak or teak and there is a wide range of complementary soft furnishings. The deckhead panels are easily removable for access to wiring and services and the floorboards are made of a special teak and holly striped laminate that needs no maintenance.

### Stowage

As well as stowage beneath most of the bunks, the Ocean 33 has ample cupboards in the main saloon and the galley, full length hanging lockers and a separate wet hanging space behind the heads.

### Accommodation

A clever arrangement in the forecabin gives two full length singles without having to share footspace or makes a double. The settee berths are full length for those who prefer to sleep in the saloon when at sea, and the aft cabin provides a domestic size double bed and has a separate escape hatch into the cockpit.

### Navigation Area

A large forward facing chart table has its own separate seat, deep stowage for charts, space for extra electronics and stowage for books.

### Galley

A gimballed 2 burner cooker with an oven and grill is surrounded by a superb granite effect worktop with moulded sinks. Where most boats of this size have only ice boxes, this galley boasts a proper 12 volt refrigerated coolbox.

### General Equipment

As you would expect from a Westerly the standard equipment package includes items such as Anchor and chain, warps, fenders, bilge pump, fire extinguisher, gaz bottle, opening stern rail, ensign socket, harness points in the cockpit, signal halyards, sailcover and a comprehensive owners manual. Your yacht is even delivered antifouled and ready for launching straight off the lorry.



85%

Clearly a Westerly, with such hallmark construction details as a teak rubbing strake, the Ocean 33 embodies all the build qualities and the fine craftsmanship that define all Westerly yachts.

The deck layout and rig have been designed for safe and easy handling, even single-handed, and with contoured ergonomic coamings fully enclosing the comfortable cockpit, you'll notice a welcome feeling of security.

### Construction

The Ocean 33 is constructed with meticulous care at every stage of the building process. Experienced technicians pay special attention to the construction, ensuring inherent structural integrity. Unlike some other manufacturers who opt for lightweight cored decks, a special Firet mat is used for a tough all-polyester deck construction which allows extra fittings to be added quickly, simply and safely at any time without any additional strengthening.

### Quality

Westerly's Production Director oversees every aspect of design and construction, ensuring that every facet of each boat meets the company's own stringent standards, besides meeting all the highest internationally recognised quality standards including ISO 9001 and EN 29001.

### Support

As a Westerly owner you will also benefit from the continuing support and advice of the yard and the world-wide network of dealers. From insurance to maintenance and repairs and the supply of spare parts or accessories, you are guaranteed all the help you might need for as long as you sail a Westerly. There is also a very active Westerly Owners' Association which offers a range of events, services and discounts to its many thousands of members.



### **Your Westerly**

We will be pleased to help if you need any further information to decide which Westerly is best for your own particular requirements. Please let us know if you would like any advice on financing or trade-in values – if you have a Westerly to trade in, you will be aware that they hold their value well.

The standard inventory of some models may change. Please refer to the current specification sheet. Pictures within this brochure may show a boat fitted with optional extras.

Call us for more information,  
or to arrange a test sail.

**Telephone +44 (0)1703 455233**



**WESTERLY**

Westerly Group Limited  
Hamble Point Marina  
School Lane  
Hamble  
Southampton  
SO31 4NB  
Telephone + 44 (0)1703 455233  
Facsimile + 44 (0)1703 455999

*A member of the Bowman Group*

The Westerly range of cruising yachts  
spans 33ft to 49ft

Designed and produced by Marketing Matters Limited.  
Printed in England 8.97.