

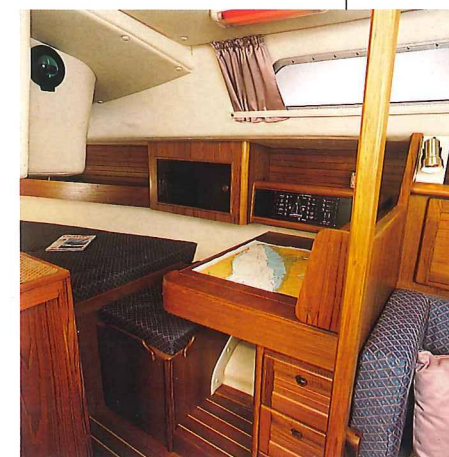
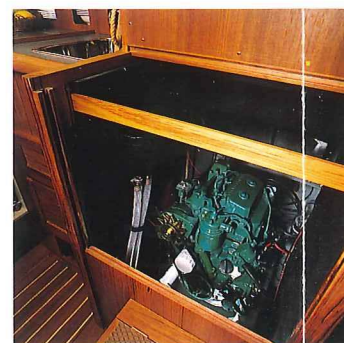
The Westerly Fulmar 33 is the latest development of one of the most famous yachts Westerly have yet produced, as used by sea schools and charter operators throughout the world.

This highly manageable 33' sloop, whose blend of elegant looks and superb sailing qualities is unmatched, has now been further enhanced. The addition of a sugar scoop stern provides a useful boarding and bathing platform, as well as ease of access particularly in man-over-board situations.

The latest improvements in upholstery and teak interior joinery make her even more pleasing to the eye and touch. She provides enjoyable cruising in comfort for all the family with a level of performance that's right at home in racing company - an unusual combination. The Fulmar's well proportioned hull and balanced sail plan, with 3/4 rig keep headsails and spinnakers to a manageable size and ensure stability in any weather. This opens up the intriguing prospect of long-distance, deep-water cruising which every yachtsman sooner or later wants to undertake.

Despite her size, the Fulmar can be handled with ease. All the halyards, spinnaker pole controls and reefing lines are led aft to tough, 2-speed winches, and stoppers located abeam the main hatch. 2-speed genoa sheet winches are mounted aft of the main hatch, for safe operation.

The cockpit forward end gives welcome shelter, and a safe, protected working area. The helmsman can see clearly ahead and keep complete all round control. The deck area is clear, uncluttered and extremely safe to work on, while every item of deck hardware is substantial and secure.



The interior is spacious and well planned, making ingenious use of all the available space. Four fixed and two opening portlights and tinted perspex saloon hatch allow plenty of light and air to come in, adding to the attractive and quietly elegant atmosphere finished throughout in teak.

6-7 adults can be accommodated on the Fulmar. There is a double berth in the port quarter, aft of the navigation area. The forward cabin has two full-length berths with lockers below and shelves above. Immediately aft are two hanging lockers and the marine WC with shower tray and basin.

The saloon features two full length berths, one convertible to a double. With the table's hinged leaves raised, there's plenty of room for as many as 8 people to sit together.

The galley's ample working surfaces, spaciousness, and standard equipment make meal preparation surprisingly easy. The gimbaled cooker has two burners with oven and a grill, with gas supply bottle in its own vented compartment in the cockpit. Under the worktop is the well insulated icebox.

The navigation area is also eminently workable, with a table that easily takes a half-folded Admiralty chart. There is ample chart stowage with drawers below and plenty of room for today's modern electronics.

Engine Power for the Fulmar comes from the very reliable and smooth running 18hp 2 cylinder diesel engine, which gives a hull speed in excess of 6 knots plus power to spare. The 20-gallon fuel tank gives a cruising range of over 200 miles.

