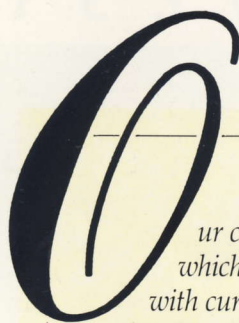


WESTERLY

SEA CRAFTSMANSHIP

*Spirit 25*





Our challenge was to produce a 25 foot yacht which would bring the qualities associated with current Westerly production to a new breed of yachtsmen.

A unique combination of classic traditional craftsmanship, hull design and equipment specification results in a compact yacht that is a pleasure to sail and to relax in.

Whatever your sailing experience and aims, the Spirit 25 will satisfy you. Both novice and single-handed enthusiast will appreciate the convenience of the self-tacking jib, which is also a boon for parents coping with younger children on board. The swept-back fractional rig means that the Spirit 25 is well balanced, and well suited to the enthusiast and expert alike.

A host of optional extras can improve performance or convenience. These include roller furling headsail; cruising chute or gennaker, to improve sailing performance in light winds. If preferred, these can be retrofitted by your Westerly Distributor.

The mainsheet track is located on the coachroof, which helps to keep the cockpit clear of clutter, seating four or more very comfortably. And there's cavernous storage space under the seat.

Profiled twin keels are standard, for the best all round cruising performance coupled with the ability to explore more of the creeks and shallows. However a single fin keel can be specified at no extra cost.

Safety and convenience come hand in hand on the Spirit 25. High guard rails run from the split pushpit, which gives easy access to the swimming platform. Central spring cleats help to make berthing simple yet safe.

High grade stainless steel fittings and window frames, and solid teak toe rails, grab handles and rubbing strake mean that the Spirit 25 will continue to look good over the years.





*The inboard diesel saildrive powers the Spirit 25 effectively and economically. She manoeuvres easily at all speeds and in reverse, and can help to counter the fiercest of spring tides that you are likely to experience.*

*Going below, it's hard to believe you're on a 25 footer. The main cabin is both comfortable and spacious, with a good sized folding table and readily accessible chart table. A compact galley contains oven and grill, icebox, sink and work surface.*

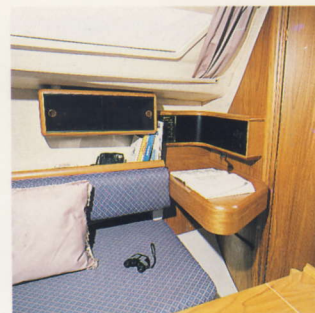
*The quarter berth is curtained off for extra privacy. All berths are over 6 feet long, with fire resistant foam in all upholstery. The forepeak can also be separated with optional curtain and tracks.*

*A hanging locker is sited alongside the quarter berth and a wet locker is situated in the spacious heads compartment.*

*All aspects of Westerly Yacht Construction are covered by BS 5750 (ISO 9001), and approved by Lloyd's Register Quality Assurance.*



*We believe that our design and production team have created a superb new model, which will proudly fly the Westerly banner.*



SPECIFICATIONS		
Length overall	7.875m	25'10"
Length waterline	6.600m	21'8"
Beam	2.700m	8'10"
Draft - twin keel	0.925m	3'1"
DESIGNED WEIGHT		
Displacement	2200Kg	4840lbs
Ballast - twin keel	1050Kg	2315lbs
Mast height above waterline	11.285m	37'0"
SAIL AREAS		
Mainsail	13.25m <sup>2</sup>	143ft <sup>2</sup>
Self - tacker	9.30m <sup>2</sup>	100ft <sup>2</sup>
Gennaker	28.30m <sup>2</sup>	304ft <sup>2</sup>

Specifications and standard inventory are liable to change according to availability of bought in and manufactured supplies.

Double gelcoat to both external hull and internally to waterline.

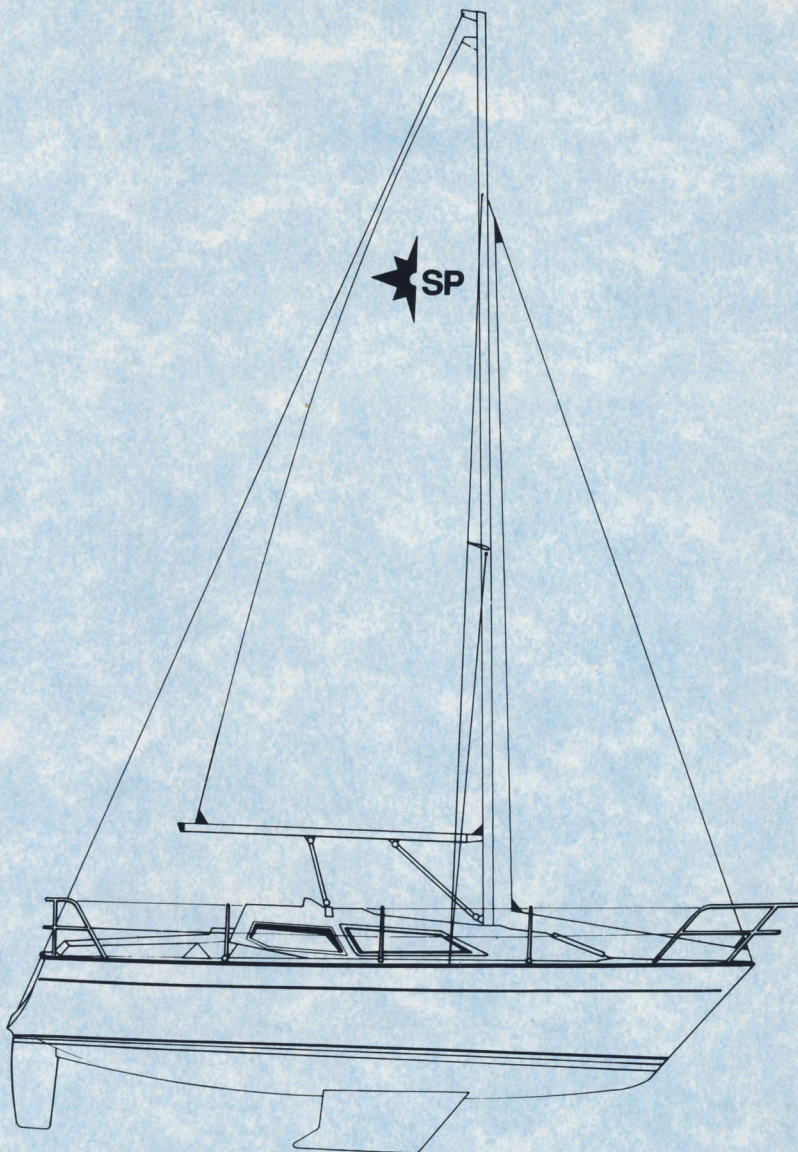
Temperature and humidity controlled laminating. Very high degree of lamination control. Our own carefully selected teak. Quality control system with 200 Lloyd's approved items. Solid teak toe rails grab handles and rubbing strake for durability.

316 high grade stainless steel from our own fabrication factory.

Fire resistant foam in all upholstery.

Keel studs above Lloyd's specification with locking nuts.

Stainless steel water tanks.



#### SALES OFFICES

HAMBLE POINT Tel: (0703) 455233 Fax: (0703) 455999

#### DISTRIBUTORS

SCOTLAND - Euroyachts Ltd. - Glasgow (041) 429 3766

EAST COAST - Fox's Yacht Sales - Ipswich (0473) 604200

WEST COUNTRY - Armada Yacht Services (0752) 672828

N. ENGLAND & WALES - Dickies of Bangor (0248) 352775

S. WALES - Dickies of Swansea (0792) 645303

CHANNEL ISLANDS -

New Horizon Yacht Agency (0481) 726335

WEST GERMANY - (04103) 88111

NETHERLANDS - (5149) 2085

BELGIUM - (3) 232 1210

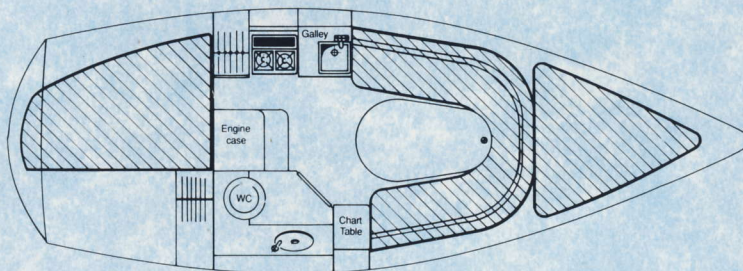
FRANCE - (94) 434594, (99) 885601, (40) 820464

PORTUGAL - (1) 2844248

GIBRALTAR - 40139

ITALY - (0185) 314021

JAPAN - (03) 3210 4534



The first sailboat builder in the world with BS5750.

**Demonstrations and test sails available 7 days a week**

Distributors also in USA and many other countries