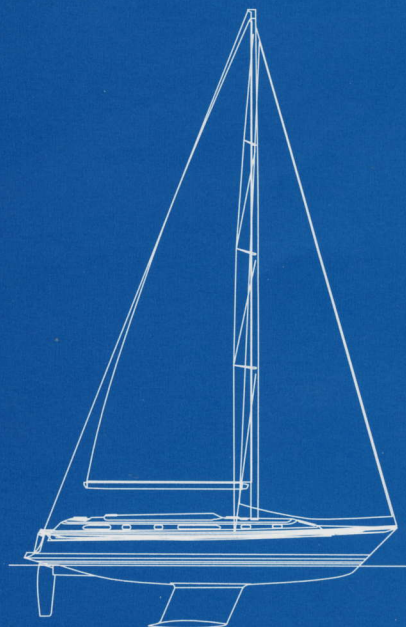
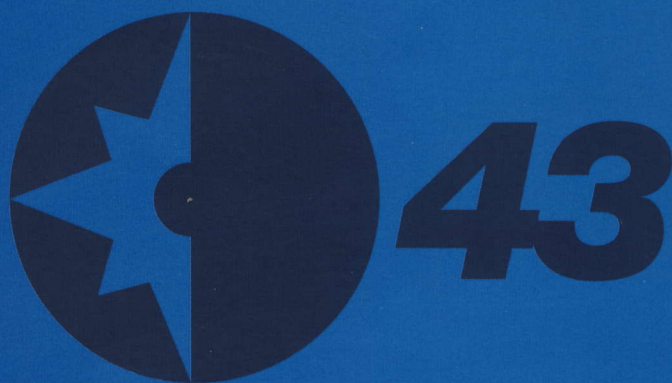


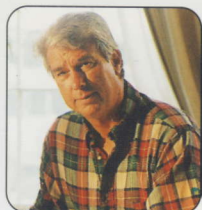


WESTERLY

Ocean 43

Centre cockpit cruising at its best





"The Ocean 43 is genuinely a boat for the future, combining the best of new technology with all the traditional values of the past"

Ron Holland

The totally new Ocean 43 is a centre cockpit blue-water cruising boat created through the inspired collaboration between Westerly and leading superyacht designer, Ron Holland.

43

Westerly's traditional values of craftsmanship and luxury remain. But the addition of Ron Holland's skill in designing fast yet sea-kindly yachts, and the use of the most advanced construction techniques, has led to the creation of a remarkable boat that represents a true revolution in yacht design.

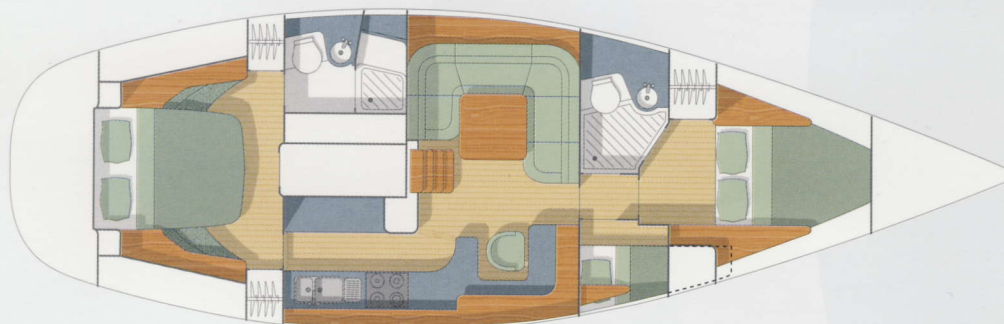
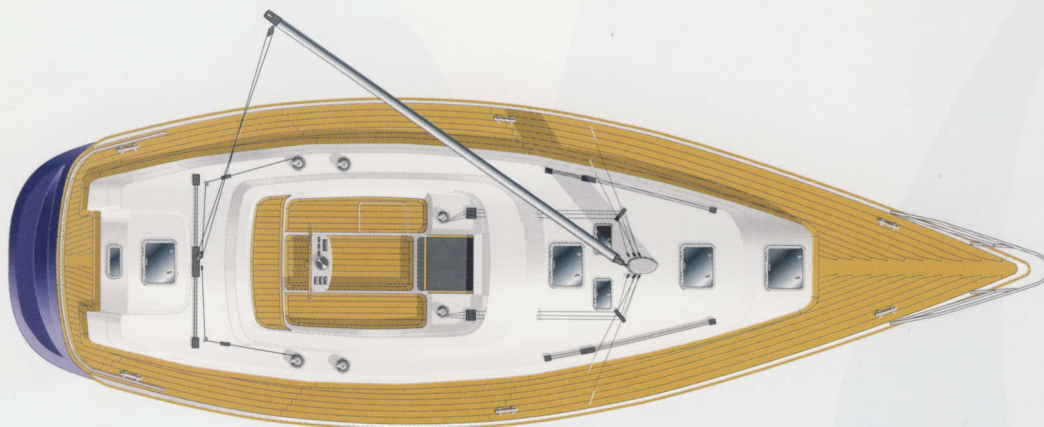
This stylish ocean-going yacht fills a gap between the popular Oceanlord 41 and the flagship Ocean 49, allowing the luxury of the 49 to be more widely enjoyed. Designed for long voyages and comfortable family cruising, the intelligently simple design of her sail-handling systems means the Ocean 43 is still easily managed by a crew of two or even single-handed.

Excellent sailing performance is complemented by spacious accommodation normally associated only with larger yachts. For safe long distance ocean passages, the Ocean 43 is not only a remarkable Westerly, but is a yacht that offers features unrivalled by any other builder.

Besides making handling under sail or power easier, the centre cockpit design allows more space below decks for a generous accommodation plan.

In addition to a large saloon there is a well-equipped galley and an exceptional navigational station. The aft owner's cabin has a centre-line, walk-around double berth and roomy en-suite facilities with separate shower stall. Forward there is a further double cabin for guests, again with its own separate head and shower. There is also a third sleeping cabin with one or two comfortable sea berths. This can alternatively be fitted as a workshop or laundry room.

Within these outlines, to personalise each boat, owners can choose from a number of options, selecting their own preference for berths, stowage facilities, choice of fabrics and wood finish – and even rigs.



Specifications

Ocean 43

Length overall 43'6" 13.25 m

Length waterline 35'11" 10.95 m

Beam 13'9" 4.2 m

Draft 5'9" 1.8 m

Mast height 64'0" 19.5 m

(above waterline)

Displacement 29,767 lb 13,500 kg

Ballast 12,123 lb 5,500 kg

Engine 50 hp diesel

Sail areas

Fully Battened Mainsail 557 sq ft 51.76 m

Furling Genoa 467 sq ft 43.4 m



Ocean 43 – Key Features

Hull

Technically advanced SCRIMP constructed hull is not only environmentally friendly but provides an air free laminate of exceptional strength and stiffness. Impact resistance is superb and insulation properties are exceptional.

Keel

A computer designed lead keel fixed with massive stainless steel bolts concentrates the weight where it is needed, providing a stiff yet easily driven boat.

Transom

A bathing platform and fold down boarding ladder make swimming easy and are essential safety features.

Cockpit

The deep centre cockpit gives an excellent position of command under power or sail. The mainsheet is well out of the way, safely situated behind the helmsman and the powerful self tailing winches are all easily at hand. Two cockpit lockers complement the fender baskets mounted on the stern rail. Teak seats and a teak cockpit grating finish off in style.

Deck

As with all the larger Westerlys teak side-decks in individual 10mm swept laid planks reflect the build quality, and an abundance of handrails and wide uncluttered decks allow safe movement about the boat. Features include a double offset anchor roller enables two anchors to be ready for action, while an electric anchor windlass takes away the effort.

Sails

A small foretriangle and a direct lead to the self tailing sheet winches make the furling genoa remarkably easy to tack. A fully battened mainsail with single line slab reefing is standard with the option of an in-mast furling system for even simpler short handed cruising. All lines are led aft to the safety of the cockpit and options such as cruising chute or spinnaker have been thought out in advance and require no extra deck hardware.

Instruments

As well as the standard compass, echo sounder and log, there is plenty of room at the chart table or in the instrument pod above the hatch for your individual choice of extra electronics.

Electrical System

Three low maintenance batteries provide ample power through a changeover isolator for engine starting and domestic needs. A comprehensive switch panel is protected by circuit breakers and includes battery monitoring gauges. Interior lighting is by a combination of overhead and reading lights. As well as a full set of navigation lights there is even a deck floodlight fitted as standard. There is also a 240 volt ring main protected by residual current breakers to give you the convenience of AC power while the built in battery charger looks after your batteries and the immersion heater warms the water when you don't want to run the motor.

Engine

The large walk in engine room gives easy access to the 50hp diesel and a larger 65hp unit is available for those who like extra power. The well lit engine room is fully sound deadened and has space for an optional diesel generator. Both fuel and water capacities are designed for serious living board.

Water System

Pressured hot and cold water are standard at the galley and in both heads compartments where there are wash basins moulded into the granite effect worktops. Each en-suite heads compartment has its own pump out shower including a separate shower stall aft.

Interior

All woodwork is in a choice of oak or teak and there is a wide range of complementary soft furnishings. The deckhead panels are easily removable for access to wiring and services and the floorboards are made of a special teak and holly striped laminate that needs no maintenance.

Accommodation

The forward guest cabin features a domestic size double berth, dressing table, generous stowage and an en-suite shower and toilet. There is a small wing cabin which provides an excellent private sea berth for passage making, and with the optional additional bunk over makes an ideal cabin for children or extra guests. The spacious saloon has wrap around seating with an adjustable table. The owners suite aft is huge with a walk-around centre-line double bed surrounded by extensive stowage for all manner of personal gear plus a dressing table.

Navigation Area

A large forward facing chart table has its own separate seat, deep stowage for charts, space for extra electronics and stowage for books. A VHF radio even comes as standard.

Galley

A gimballed three burner cooker with grill and oven is surrounded by a superb granite effect worktop with double moulded sinks. The huge refrigerated icebox can be split into a fridge/freezer at extra cost and with a second inboard work surface over yet more cupboards, cordon bleu entertaining is simple.

General Equipment

As you would expect from a Westerly the standard equipment package includes items such as anchor and chain, warps, fenders, bilge pump, emergency tiller, fire extinguisher, gaz bottle, opening stern rail, ensign socket, harness points in the cockpit, signal halyards, sailcover and a comprehensive owners manual. Your yacht is even delivered antifouled and ready for launching straight off the lorry.

There is something about a Westerly that is hard to define, but the familiar appearance of the Ocean 43 confirms the integrity of workmanship and the quality values that belong to all Westerly yachts. With a small foretriangle and a powerful main, the Ocean 43 offers an easy-tacking furling headsail to make short-handed sailing a breeze.

Construction

The Ocean 43 is built using the technically advanced SCRIMP process, successfully pioneered in Europe by the Bowman Group's composite division and well proven in the defence and aeronautical industries. In this, resin is applied to the hull mould under vacuum, which ensures even cover and total penetration, increasing strength and so providing a guaranteed construction standard for a minimum weight. The process is also very good environmentally. It uses, and wastes, less materials, and with lamination and curing taking place in a vacuum, there is no escape of polluting styrenes.

Quality

Westerly's Production Director oversees every aspect of design and construction, ensuring that every facet of each boat meets the company's own stringent standards, besides meeting all the highest internationally recognised quality standards including ISO 9001 and EN 29001.

Support

As a Westerly owner you will also benefit from the continuing support and advice of the yard and the world-wide network of dealers. From insurance to maintenance and repairs and the supply of spare parts or accessories, you are guaranteed all the help you might need for as long as you sail a Westerly. There is also a very active Westerly Owners' Association which offers a range of events, services and discounts to its many thousands of members.



Your Westerly

We will be pleased to help if you need any further information to decide which Westerly is best for your own particular requirements. Please let us know if you would like any advice on financing or trade-in values – if you have a Westerly to trade in, you will be aware that they hold their value well.

The standard inventory of some models may change. Please refer to the current specification sheet. Pictures within this brochure may show a boat fitted with optional extras.

Call us for more information,
or to arrange a test sail.

Telephone +44 (0)1703 455233



WESTERLY

Westerly Group Limited
Hamble Point Marina
School Lane
Hamble
Southampton
SO31 4NB
Telephone + 44 (0)1703 455233
Facsimile + 44 (0)1703 455999

A member of the Bowman Group

The Westerly range of cruising yachts
spans 33ft to 49ft

Designed and produced by Marketing Matters Limited.
Printed in England 8.97.