



SEA  
OR  
RA  
F  
S  
M  
A  
R  
S  
I  
C

 **WESTERLY** Konsort 29



# KONSORT 29 FAMILY CRUISER

The Westerly Konsort 29 is a good looking family cruising yacht, designed by Laurent Giles & Partners, with spacious accommodation for up to six in two separate cabins. She is an ideal boat for family cruising being easily handled and having good performance under sail and power.

**Forecabin** Twin 'V' berths with infill to make a comfortable double, with...

**Separate heads** to port with marine WC and stainless steel washbasin with hot and cold supply plus shower available as an option. There is a hanging locker opposite the heads with ample space for shoregoing clothes and oilskins.

**Saloon** large saloon measuring 9' 4" by 10' 6" (beam) with two single berths. The port berth converting to a double quickly and easily with the seatbacks being removable to increase the width of the berths. When these berths are being used as settees the space behind the backrest is used as stowage for sleeping bags, clothing etc. The seatbacks also double as lee boards when dropped into retaining slots on the bulkheads ensuring the comfort of the crew on passage. Headroom in the saloon is 6'.

**Galley** situated to starboard by the hatchway in the most stable and best ventilated part of the boat. A two-burner cooker with oven and grill is fitted as standard.



There is a large stainless steel sink supplied from a 30 gallon stainless steel fresh water tank.

A large well-insulated icebox is fitted below the work surface and there is ample stowage for provision, plates and cups etc.

**Quarter Berth** to port with stowage bins under. All the internal hull surfaces are fully lined against condensation; deck head areas have removable ply panels, allowing easy access for additional deck fittings, wiring runs etc.

**Chart Table** to port with inside stowage of charts. A chart light is fitted and there is ample space outboard for books and the mounting of instruments.

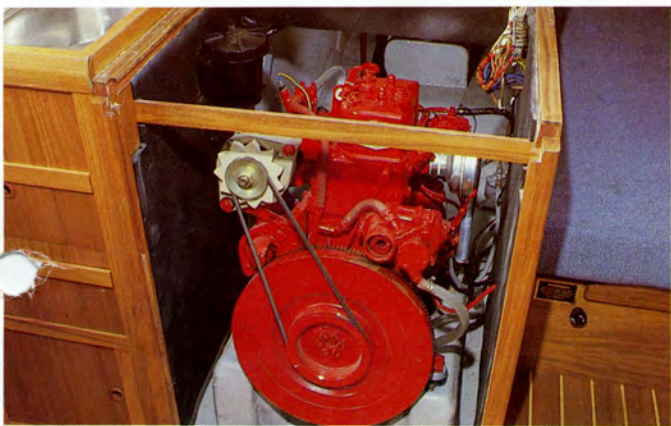






**On Deck** Bow and stern pulpits with double stainless steel guard rails and well positioned teak grabrails make for safe movement on deck in all weathers. A large transparent forehatch opening to forecabin gives light and ventilation. Mooring cleats are fitted on the bow, stern and midships.

**Cockpit** Deep self-draining cockpit with well angled coamings for maximum comfort. Two-speed foresheet winches on coamings with halyard winches placed in deck alongside main hatch. Halyards and slab reefing lines are led aft with stoppers making it possible to use the halyard winches for both reefing and hoisting sail.



**Engine** Consort is powered by a well known 18hp twin cylinder diesel engine, which drives the boat quietly and economically at over six knots through a conventionally driven two-bladed propeller. The engine is fitted with decompressors and provision for hand-starting. The sound-deadened engine compartment is designed to give maximum access for routine maintenance.



**The Rig** A single spreader masthead rig with a deck stepped mast. All standing rigging is stainless steel with prestretched Terylene running rigging.

The cap shrouds are taken to chain plates bolted through the main bulkhead. The lower shrouds are taken to stainless steel tie bars secured to heavy webs glassed to the hull outboard of the saloon seatbacks.

**The Rudder** is transom hung and partly balanced ensuring excellent manoeuvrability under sail power. The massive stainless rudder fittings are bolted through the transom which is reinforced by marine plywood on the centreline.

**Quality** The keel is made of cast iron and is secured by marine grade stainless steel studs with backing plates and nuts inside the boat. Every Consort is inspected during building by a Lloyds surveyor and a Lloyds Hull Construction Certificate is supplied as part of the standard inventory.



# THE WESTERLY KONSORT 29

## SAIL AREAS

Mainsail	180sq.ft.	16.72sq.m.
No. 1 Genoa	333sq.ft.	30.94sq.m.
No. 2 Genoa	257sq.ft.	23.88sq.m.
No. 1 Jib	168sq.ft.	15.61sq.m.
No. 2 Jib	120sq.ft.	11.15sq.m.
No. 3 Jib	68sq.ft.	6.32sq.m.
Spinnaker	753sq.ft.	69.96sq.m.

## SPECIFICATION

Length overall (excluding rudder)	28' 10"	8.80m
Length waterline	25' 6"	7.77m
Beam	10' 9"	3.29m
Draft - Fin Keel	5' 4"	1.62m
Draft - Twin Keels	3' 2 $\frac{1}{2}$ "	0.98m

## DESIGNED WEIGHTS

Displacement	8516lb	3870kg
Ballast - Fin & Twin Keels	3200lb	1451kg
Mast height above waterline	40' 4"	12.29m

Specifications and standard inventory are liable to change according to availability of bought in and manufactured supplies. Some items shown in the photographs are not included in the standard price.

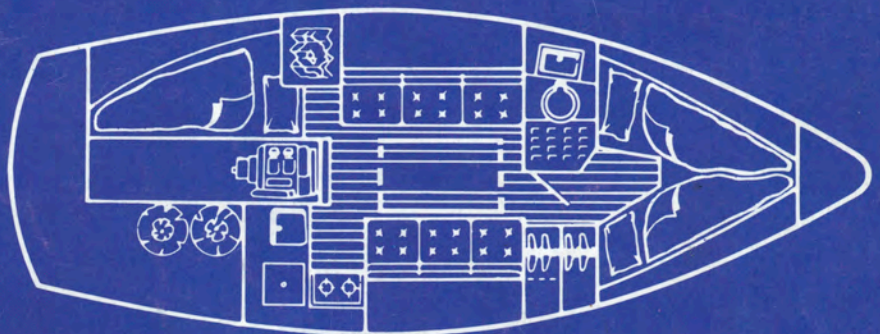
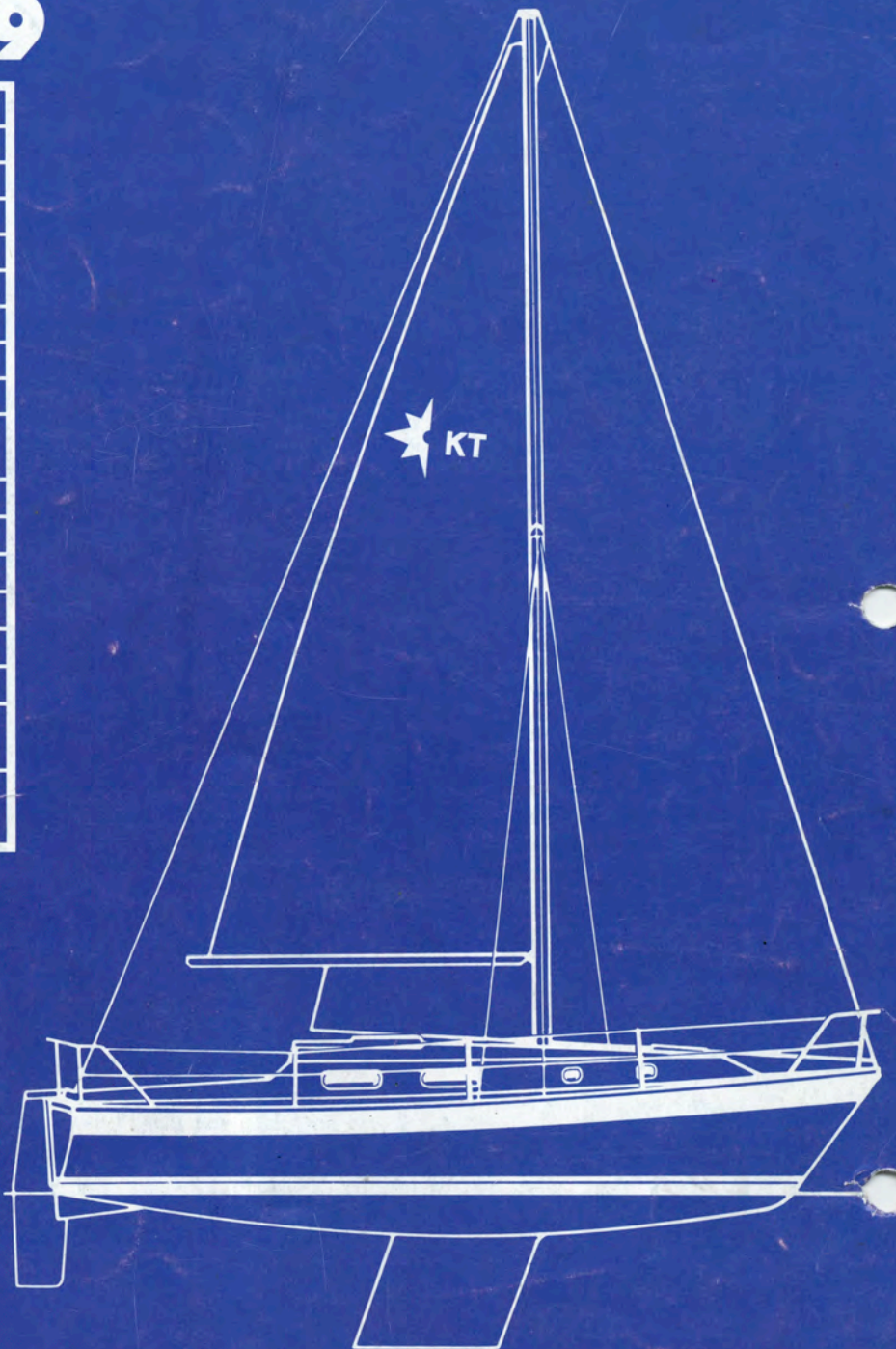
## CONSTRUCTION STANDARDS

Lloyds Hull Construction Certificate. Double gelcoat to both external hull and internally to waterline. Temperature and humidity controlled laminating. Very high degree of lamination control. Our own carefully selected teak. Quality control system with 200 Lloyds approved items. Solid teak toe rails grab handles and rubbing strake for durability. 316 high grade stainless steel from our own fabrication factory.

Fire resistant foam in all upholstery.

Keel studs above Lloyds specification with locking nuts. Stainless steel water tanks.

Lloyds  
Register



## WESTERLY

Westerly Yachts Limited, 47 Aston Road,  
Waterlooville, Portsmouth, Hants PO7 7XJ.  
© A subsidiary of Westerly plc

THE WESTERLY RANGE - OCEAN CRUISING YACHTS -  
OCEANMASTER 48, OCEANLORD 41, OCEANRANGER 38.  
PERFORMANCE YACHTS - TYPHOON 37, STORM 33,  
TEMPEST 31. FAST CRUISING YACHTS - SEAHAWK 35,  
STORM CRUISER 33, FULMAR 32, KONSORT 29, MERLIN 29.  
DECK SALOON YACHTS - RIVIERA 35.

SALES OFFICES: HAMBLE POINT (0703) 455233, Brighton  
(0273) 609556, Ipswich (0473) 681677, Plymouth (0752) 672828.  
DISTRIBUTORS: Scotland and N. Ireland - Euroyachts Ltd. -  
Glasgow (041) 429 3766. S. Ireland - Neil Watson  
Ltd. - (0001) 806070. N. England and N. Wales - Dickies  
of Bangor - (0248) 352775. S. Wales - Dickies of Swansea -  
(0792) 645303. Channel Islands - New Horizon Yachts  
Agency - (0481) 26335. West Germany - (04562) 6247.  
Netherlands - (5149) 1566. Belgium - (3) 232 1210. France  
- (99) 885601 - (40) 820464 - (94) 434594. Japan - (03)  
210 4480. Portugal - (1) 2844248.

AFTER SALES SERVICE (0705) 256406.

The only sailboat builder in the world with BS5750.



100 Freefone Westerly Yachts. Demonstrations are available 7 days a week.