

*For some people, quality is everything. In everything they do. The guiding maxim being, 'if it's not worth doing well, it's not worth doing at all.' It applies to work, it applies to play, it applies certainly to the way things are and the way they work.*

*If you're that kind of person, who appreciates quality, craftsmanship, good engineering and who wants the best from everything, you'll certainly want it from the boat you sail.*

*You'll want performance and speed, of course, but you'll want comfort and style as well, to enjoy and share with your friends.*

*Westerly have built a boat for people like you. The Falcon 35. A boat that combines the sailing joy of a performance craft, with three cabin luxury and comfort that sleeps up to seven.*

*Your first steps aboard tell you the Falcon is designed to be sailed. Her sleek slim lines and stylish coachroof graphics give the impression of speed at once. Her aft cockpit is spacious with comfortable seating. All lines lead aft for easy short handed sailing. There are good sized winches and a huge sail locker. Simple slab reefing is a feature of the mainsail, as well as an efficient single spreader masthead rig.*

*There is good clear deckroom and a safe freeboard. The handrails are solid teak. Her stern boasts a new rear scoop to lengthen her lines and help her slip through the water faster.*

*She's a classic Westerly and Ed Dubois design. Her computer aided design hull makes her a joy to sail. With ease of handling that still gives great performance allowing remarkable stability both to windward and downwind. Her wheel steering gives precise control and a powerful 28HP diesel engine is fitted as standard.*

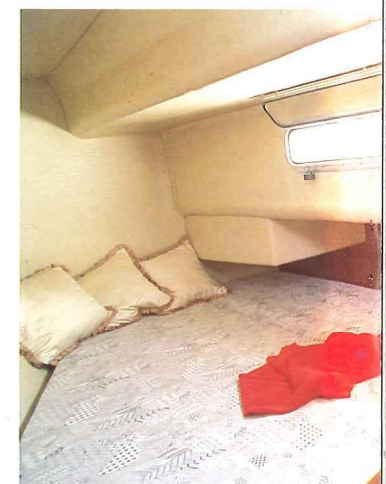


*If above decks the Falcon could be taken as a performance cruiser, below there's no mistake. Light, space and luxury greet you.*

*Quality hand chosen teak is used for woodwork throughout and all proportions are designed to give the feel of relaxed living space.*

*The aft cabin is massive and offers accommodation of stateroom proportions with an enormous double berth and en-suite heads for complete privacy. A full length wardrobe locker and standing headroom complete the luxury feeling.*

*The forecabin is light and airy, with twin "V" berths that can convert to a double, and individual reading lights for added comfort. The sloping forehatch adds to the airiness and*





*If above decks the Falcon could be taken as a performance cruiser, below there's no mistake. Light, space and luxury greet you.*

*Quality hand chosen teak is used for woodwork throughout and all proportions are designed to give the feel of relaxed living space.*

*The aft cabin is massive and offers accommodation of stateroom proportions with an enormous double berth and en-suite heads for complete privacy. A full length wardrobe locker and standing headroom complete the luxury feeling.*

*The forecabin is light and airy, with twin "V" berths that can convert to a double, and individual reading lights for added comfort. The sloping forehatch adds to the airiness and*



*provides easy access to the deck.*

*The forward heads feature hot and cold shower and washbasin, and its special design ensures that it's easy to keep clean and fresh. Opposite there is extra hanging space for clothes as well.*

*The saloon, too, is light and spacious, with wraparound seating that converts to berths that sleep three people, as one single and a double. The finish here is exceptional, with the Westerly tradition maintained even to touches like the mastpost being finished in teak.*

*The galley contains a double sink, the wide work surfaces are stylishly tiled and easy to clean. There is a well insulated ice box. Hot and cold water are pressure fed. The oven and grill are*

