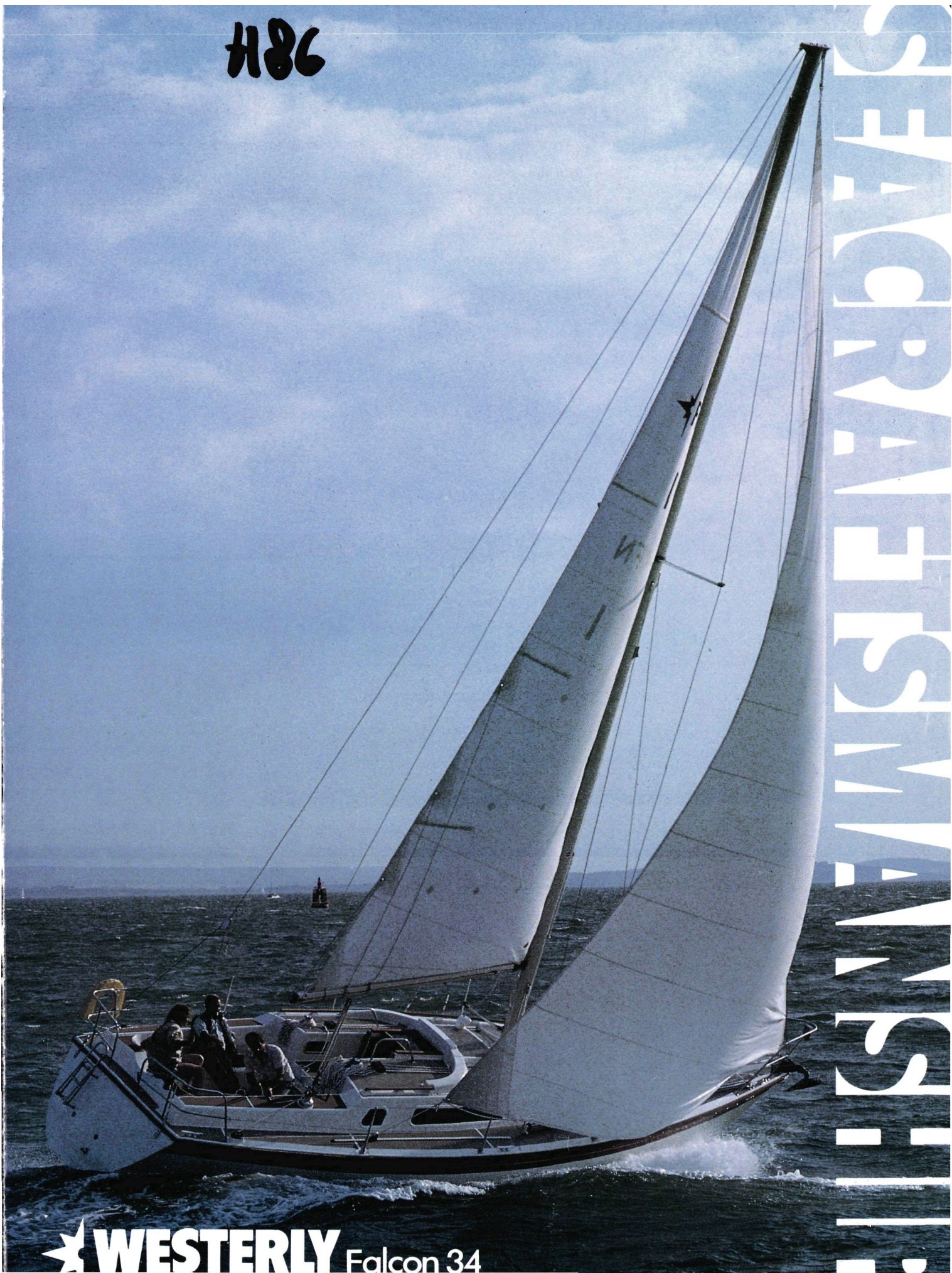


H86

SEARCHING FOR THE SWANSEA



**WESTERLY** Falcon 34

# THE AFT COCKPIT PERFORMER

The Falcon 34 is a brand new aft cockpit yacht from Westerly that combines real performance with three cabin cruising comfort.

Ed Dubois, designer of the Americas Cup yacht Victory, is responsible for the sleek, fast, computer researched hull. Ease of handling has been the primary consideration and the hull offers remarkable directional stability both to windward and downwind.

That stability, together with a high degree of manoeuvrability and wheel steering, makes the Falcon a joy to sail.

Unusually for an aft cockpit craft of this class, Falcon offers an exceptionally high level of accommodation with three separate cabins and two heads as standard.

**Forecabin** is light, airy and has twin full-length V-berths with individual reading lights, plenty of stowage space and an infill to make a generous double.

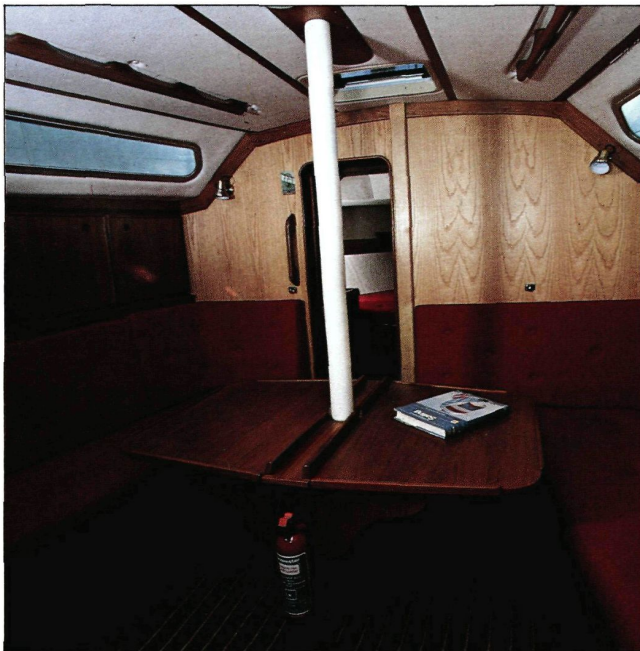
**Forward heads** are located aft of the forecabin, with washbasin and shower. Here too is hanging space for shoregoing clothes. The heads are designed to be practical at sea and easy to clean.

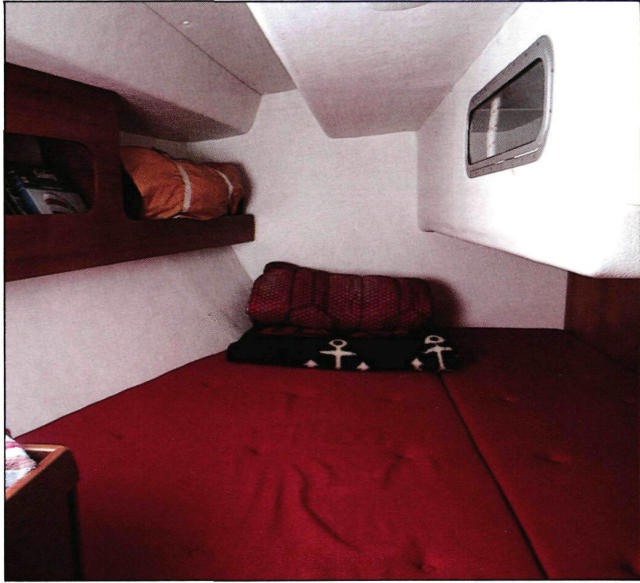
**Saloon** is well-lit and gives a good impression of space with extensive use of teak and ash joinery. There is a single berth on the port side and a single which converts into a generous double to starboard.



**Galley** situated to port, aft of the saloon is well-appointed, with useful features such as twin sinks supplied from a stainless steel tank and extra Westerly touches such as tasteful ceramic tiling and a pressurised hot and cold water system. There is plenty of cupboard space and the entire galley area is easy to clean.

**Navigation** Starboard of the companionway is the navigation area. The chart table is large enough for a folded Admiralty chart and there is plenty of





stowage space for charts and books. Provision is made for additional instrument mounting.

Next to the companionway is a ventilated wet gear locker, which ingeniously uses heat from the engine to keep clothing warm and dry.

**Aft Cabin** is luxurious and offers accommodation of stateroom proportions with a large double berth and en-suite heads. There is generous hanging and stowage space and standing headroom.

Throughout, the Falcon feels like a much larger boat and offers privacy and comfort for six or seven people to live aboard in luxury.



**On deck** the Falcon is as comfortable as below, with the emphasis on ease of handling.

**Cockpit** is spacious and offers comfortable seating, wheel steering and all lines are led aft for short-handed sailing.

Simple slab reefing is a feature of the mainsail, with the reefing lines led back to the cockpit, where the good-sized winches are located.

The Falcon is designed to be sailed. That is why you will find a huge sail locker, good, clear deckroom and a safe freeboard, as well as an efficient single spreader masthead rig.

**Quality** Like all Westerly yachts, the Falcon is built to the most exacting standards of quality control. Every Falcon is inspected by Lloyds surveyors during building and a Lloyds Hull Construction Certificate is part of the standard inventory.

**Falcon** The perfect balance between real performance and total luxury.



POWER AND  
**VOLVO PENTA**  
PERFORMANCE

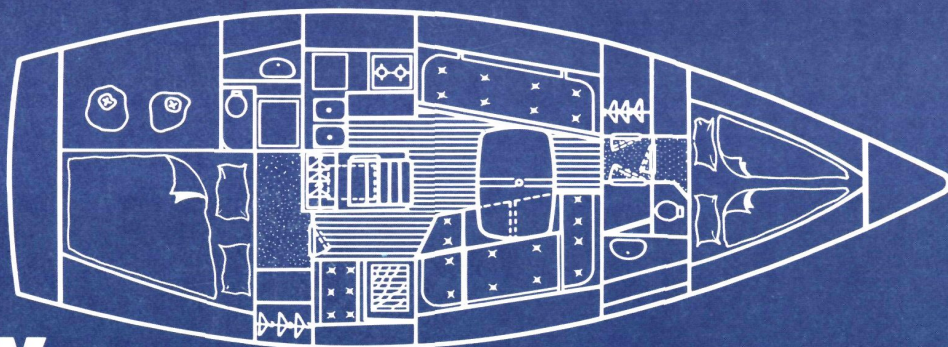
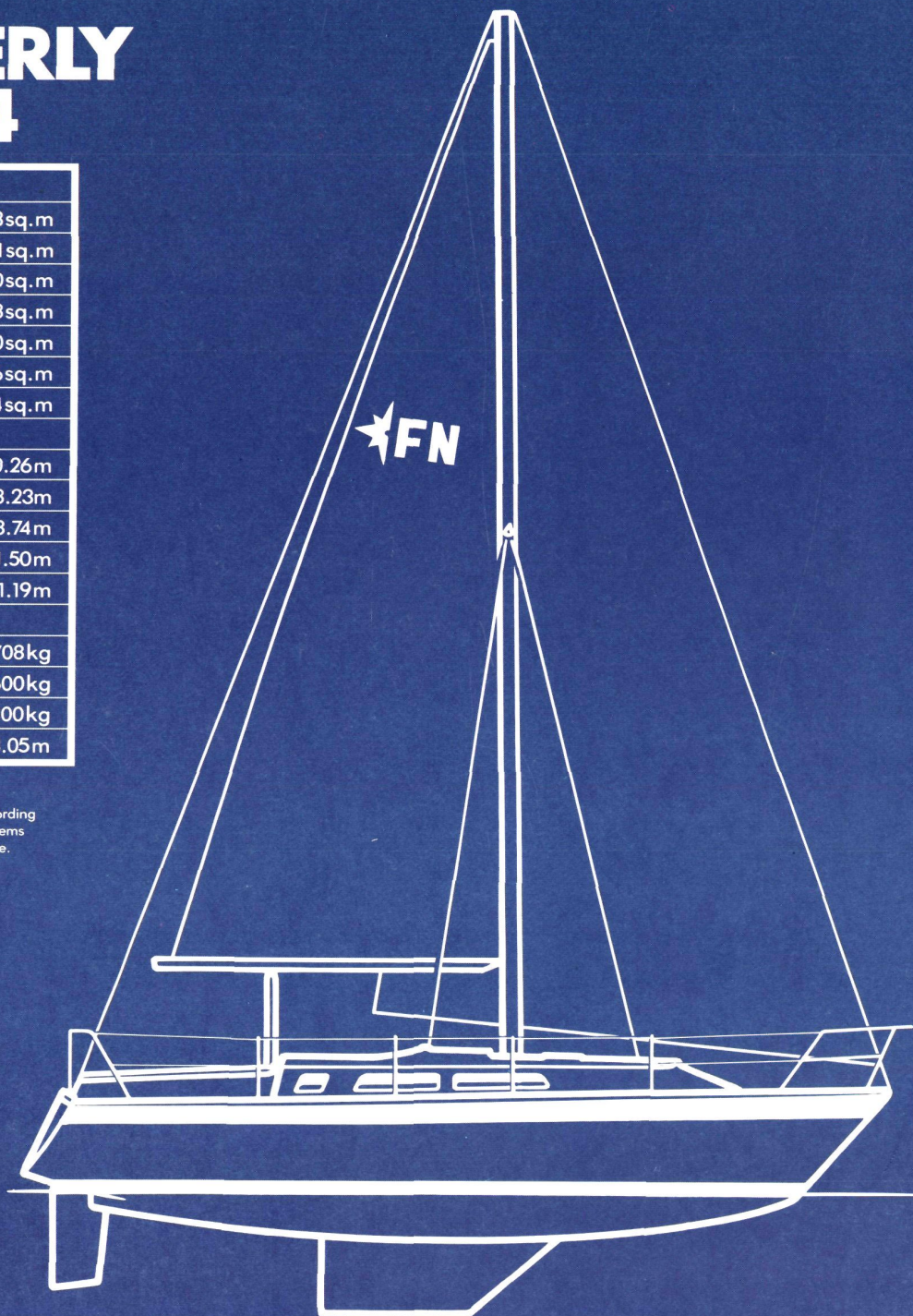
**Engine** Under power, too, the Falcon is easy and safe to use, with the reliable Volvo 2003 28hp diesel engine driving a conventional propeller.

# THE WESTERLY FALCON 34

SAIL AREAS		
Mainsail	240sq.ft	22.3sq.m
No.1 Genoa	485sq.ft	45.1sq.m
No.2 Genoa	398sq.ft	37.0sq.m
No.1 Jib	288sq.ft	26.8sq.m
No.2 Jib	204sq.ft	19.0sq.m
Storm Jib	82sq.ft	7.6sq.m
Spinnaker	1135sq.ft	105.4sq.m
SPECIFICATION		
Length overall	33' 8"	10.26m
Length waterline	27' 0"	8.23m
Beam	12' 3"	3.74m
Draft - Fin Keel	4' 11"	1.50m
Draft - Twin Keel	3' 11"	1.19m
DESIGNED WEIGHTS		
Displacement	12588lb	5708kg
Ballast - Fin Keel	5733lb	2600kg
Ballast - Twin Keel	6171lb	2800kg
Mast length	42' 10"	13.05m

#### LLOYDS HULL CONSTRUCTION CERTIFICATE

Specifications and standard inventory are liable to change according to availability of bought in and manufactured supplies. Some items shown in the photographs are not included in the standard price.



**WESTERLY**

Westerly Yachts Limited, 47 Aston Road, Waterlooville, Portsmouth, Hants PO7 7XJ.

© (A subsidiary of Centreway Industries plc.)