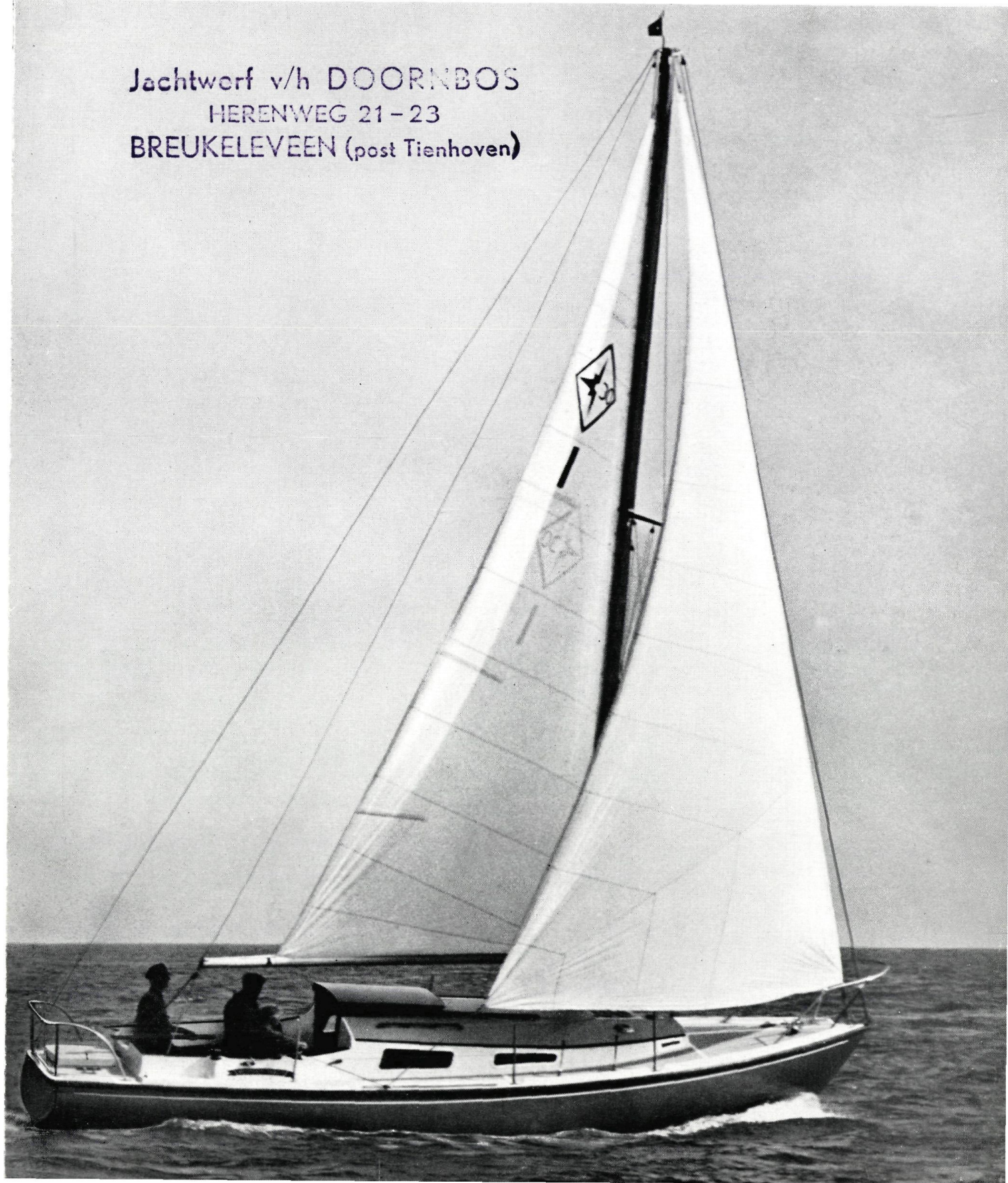


Westerly 30

168

6 berth family cruiser *(Designed by D. A. Rayner, Assoc. R.I.N.A.)*

Jachtwerf v/h DOORNBOS
HERENWEG 21-23
BREUKELEVEEN (post Tienhoven)



The spirit of a racer...the power of a motor boat...

Westerly 30

The spirit of a racer . . . the power of a motor boat . . . the stability and comfort of a family cruiser – that's the new Westerly 30.

She's a fast twin-keel sloop with a real sailing hull (she will tack to windward under either jib or main alone) and an inboard diesel engine fitted as standard. She's definitely not a 50/50. Nor a motor sailer. Westerly 30 is 100 per cent sailing boat: 100 per cent motor boat.

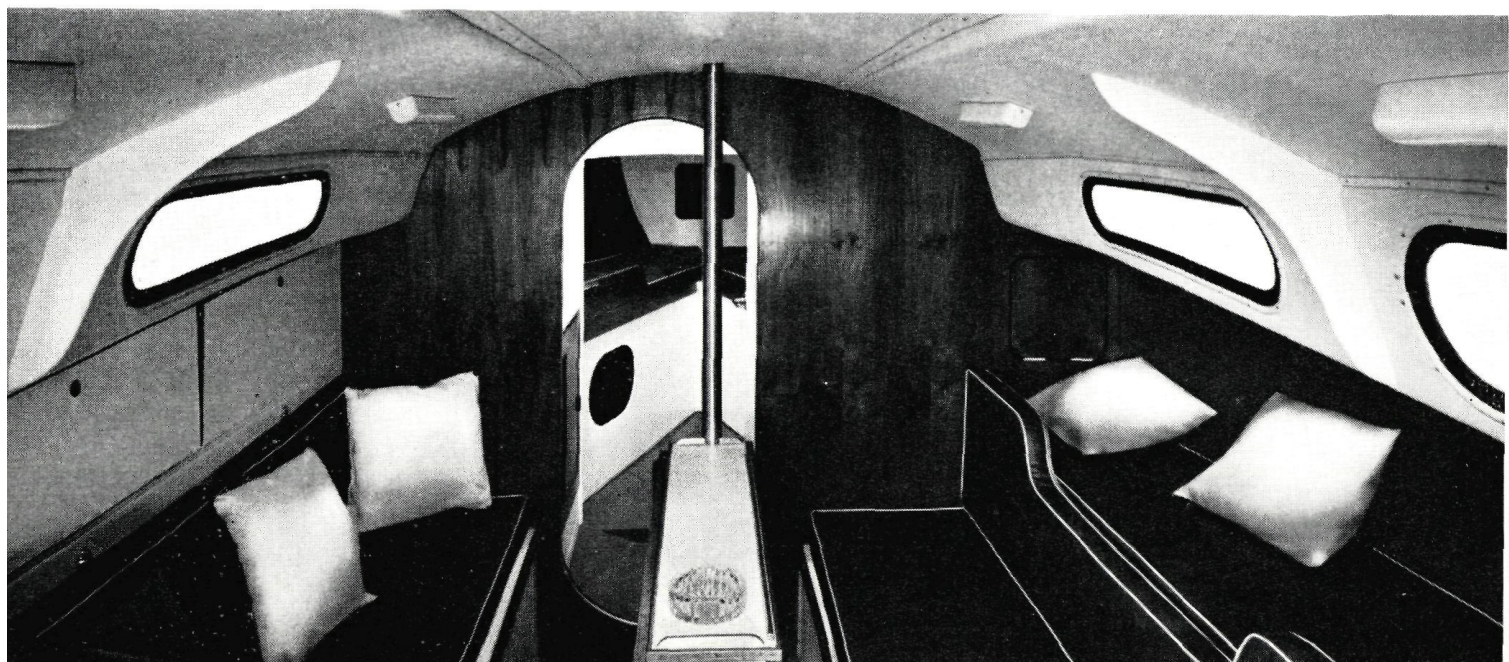
Under power or under sail, Westerly 30 is the liveliest, fastest, most thrilling boat ever designed by Westerly with all the features that have earned Westerly yachts such a high reputation for family sailing (and a Lloyds' Certificate for workmanship and strength).

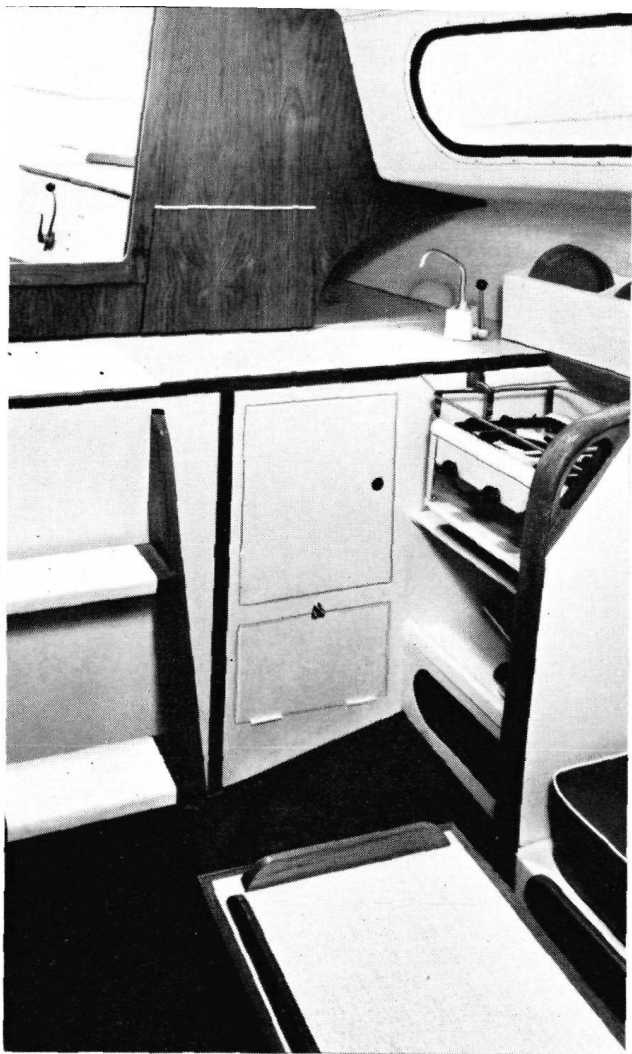
The Cockpit It's self-bailing with sea cocks fitted to both drains. There's plenty of room for six adults. All your gear is close at hand and easy to reach. Woodwork, seats and floor are teak, and the seat back-rest is deep and set at a comfortable angle for leaning.

The Cabin Particular care has been taken to make the accommodation, which is arranged in two cabins, really adequate for all the family (and their guests). She'll sleep six full-size adults comfortably: all berths are 6' 6" long. Headroom in the main cabin is 6' 2" (full headroom like this is exceptional in boats of this draught); and 5' 6" in the forward cabin. There's

a marine toilet and washbasin in a *separate compartment*; calor gas two-burner stove and grill; fresh water tanks to carry 40 gallons; galley sink, draining board and large working top finished in Formica. There's ample storage space. And generous use of toned woodwork everywhere (a feature your wife will love). Everything is convenient, compact and easy to care for. A real home afloat!

The Engine For ordinary cruising purposes the 15 h.p. Volvo Penta MD 2 has been proved more than adequate. But, for those who want still more power, a 34 h.p. Mercedes diesel can be fitted.





Above: Everything in the cabin is compact, convenient and easy to care for.

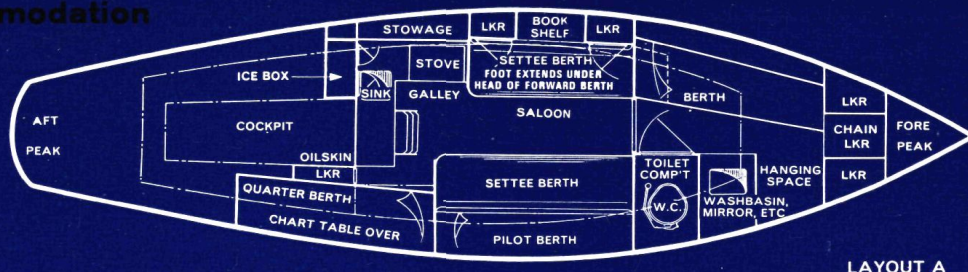
Right: The comfortable self-bailing cockpit has plenty of room for six adults.

Below: Although designed as a family boat, she'll thrill the veteran skipper with her performance under sail and under power alone.

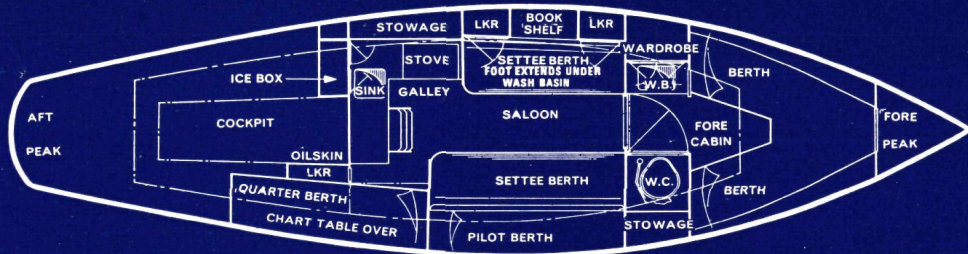
Opposite page: The spacious cabins sleep six adults.



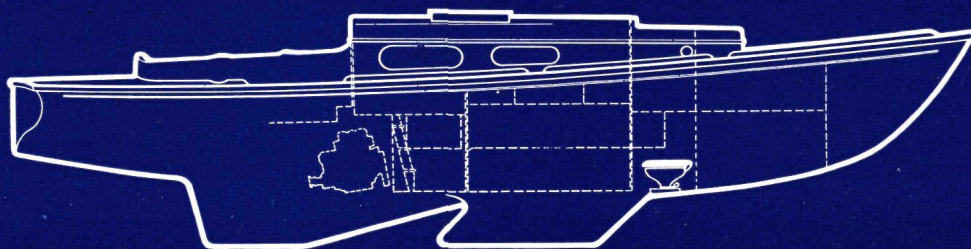
Accommodation plans



LAYOUT A



LAYOUT B



Specification

LENGTH OVERALL 30' 2 1/2".

LENGTH (Waterline) 25' 9".

BEAM (Deck) 8' 8".

DRAUGHT 3' 0".

BEAM (Waterline) 7' 8".

HEADROOM 6' 2" (min.) throughout main cabin; forward cabin 5' 6".

DRY WEIGHT For trailing 7020 lb.

DISPLACEMENT With crew and cruising gear 8490 lb.

SAIL AREA Main and Genoa 413 sq. ft. Main and No. 1 jib 365 sq. ft.

BALLAST 1250 lb. each keel, 300 lb. skeg heel. Total 2800 lb.

ENGINE Either the Volvo Penta 15 h.p. MD 2 Diesel or the 34 h.p. Mercedes-Benz OM 636 are fitted as an alternative choice.

SKIN AND DECK Glass reinforced polyester resin laminate to current Lloyds' specification.

MAIN FRAMES Laminated top hat section to Lloyds' specification for reinforced plastic yachts.

KEEL BOLTS Each cast-iron keel weighing 1360 lb. is through bolted to the hull with five stainless steel stud bolts. Each bolt is capable of containing a shear-load of 41 tons. This apparently excessive margin is to preclude any bending of the bolts on impact.

RUDDER The entire metal work of the spade rudder is of stainless steel and the cage around which the glass fibre rudder is moulded is of the same material. The rudder is of true hydrofoil section. The sizes of all parts are in excess of Lloyds' rules.

SKEG AND BILGE KEEL STUBS are integrally moulded with the glass fibre hull. There is no wood below the waterline. Both the skeg and the stubs have been most carefully faired into the low-drag hull to reduce turbulence to the minimum.

WOOD DECK TRIM includes cockpit floor and seats and trim on cabin top and cockpit coaming. All in Burma teak.

INTERIOR WOODWORK Interior furniture, bulkheads: mahogany marine ply. Drawer and cupboard faces and framing: solid mahogany.

INTERIOR CABIN SIDES Panelled in Vyanide material over foam rubber.

DECK FITTINGS All deck fittings, fairleads, cleats, sternhead roller, chain plates, etc., are of marine quality stainless steel.

MAST AND SPARS Gold anodised aluminium mast and boom by Proctor. Gibb roller reefing gear.

STANDING RIGGING Stainless steel 1/4" one/nineteenth wire. All ends swaged to stainless steel terminals. Gibb stainless steel Lockmaster rigging screws.

BLOCKS Gibb stainless steel strapped Tufnol blocks of adequate size.

RUNNING RIGGING Main and jib halyards of three-strand pre-stretched Terylene 1 1/4" circumference. Main sheet 1 1/4" circumference plaited Terylene. Jib sheets 1 1/2" circumference.

SAILS All fore and aft sails other than Genoa and Spinnaker of 7 1/2 oz. Terylene by Ratsey & Lapthorn. Genoa 4 1/2 oz. Terylene. Spinnaker 2 oz. Nylon.

PAINTS Anti-fouling International Hard Racing Copper. Exterior trim - teak oil. Interior varnish International Polyurethane 101.

SEA COCKS All skin toilet fittings, cockpit drains and the sink drain are fitted with sea cocks of best quality bronze.

The Company is always seeking improvements and therefore reserves the right to change the specification without prior notice.

Standard price includes the following:

- Mainsail and No. 1 jib in 7 1/2 oz. Terylene - 365 sq. ft.
- Stainless steel standing rigging.
- Terylene running rigging.
- Stainless steel bow pulpit.
- Stainless steel stern pulpit.
- Two foresheet winches (Gibb Pattern 587).
- Marine toilet and washbasin forward.
- Calor gas two-burner stove and grill.
- Galley, sink and large Formica work top.
- 40 gallon fresh water tank with deck filler and two flipper pumps (one serving the sink, the other the washbasin).
- One bilge pump (Whale Gusher), capacity 15 galls. per minute.
- Two ventilators in deckhead.
- Set of berth cushions.
- Lighting: port and starboard navigation lights, stern light and seven cabin lights (12-volt system).
- Hinged lee boards on all berths.
- Navigator's folding chart table and stowage.
- Lloyds' Hull Moulding Certificate.

WESTERLY MARINE

Hambledon Road, Waterlooville, Hants.
Telephone: Waterlooville 51231