

WESTERLY

SEA CRAFT IS MANSHIP



WESTERLY
Corsair 436

LONG DISTANCE LUXURY.

The Westerly Corsair II 36 is an imposing vessel. Second only to the Sealord in the Westerly fleet, the Corsair provides luxurious accommodation for up to eight people, yet is so tractable as to be easily handled by just two.

The designer of the Corsair, Ed Dubois, made it his business to ensure that she displays excellent seaworthiness, viceless handling and a brisk turn of speed without sacrificing any volume or comfort below decks.

The result is an elegant, modern yacht which like any Westerly immediately appeals to the eye even in harbour. Her build quality is immediately apparent from the deep lustre of the hull, and traditional yet practical features like the solid teak rubbing strakes and toerails.

Stepping aboard, the first thing to be noticed is the impression of space. The side decks are wide and clear, with ergonomically sited grabrails, handrails and lifelines. The mast foot is uncomplicated, with all main halyards and lines led aft to the cockpit.

The self-draining cockpit itself is deep and comfortable, providing a large, safe working area. Below the starboard seat is a truly cavernous sail locker, with plenty of space for all the usual gear a cruising yacht acquires as well as the full complement of sails. Access to the locker is easy and safe with two generous steps and a gullwing locker lid.

Moving towards the companionway past the wheel position, the coaming mounted sheet winches and the coachroof mounted halyard winches, more thoughtful touches become apparent. There are plenty of over-size lifeline points, for example, and a high coaming to keep the cockpit dry in a seaway.

But it is below decks that the Corsair really begins to show her true colours. The first impression is of quality teak everywhere, finished to a standard usually only found on one-off, larger yachts. The galley would not shame a home ashore, with a large work surface in ceramic tiling, stylish wooden louvre slide doors to the lockers and a new, efficient plate and cup storage system. The gimballed cooker has two burners, an oven and a grill, and a large ice box and twin sinks are provided. More than enough to cook a feast, anywhere in the world!

Forward of the galley is the main saloon, where ample locker space with solid teak louvre doors lines the walls around the folding table. Luxurious seating surrounds the table, with enough room for a full crew and converts easily to a large 4'9" double berth.

Forward of the main cabin are the main heads and hanging lockers. The heads feature a newly modernised vanity unit, and hot and cold pressurised water is available at the taps and for the shower.

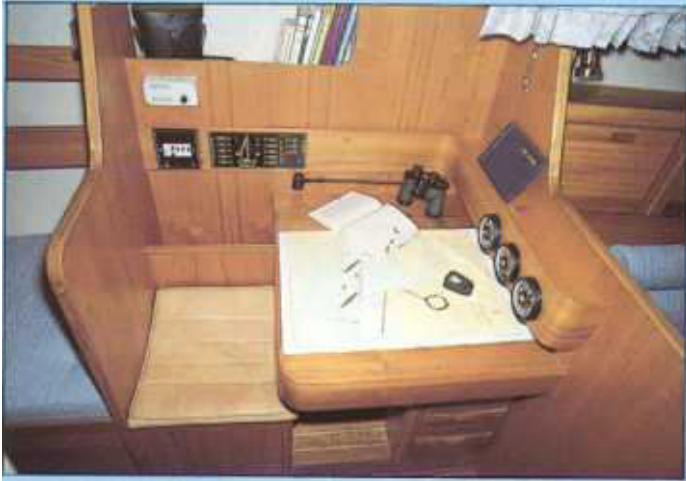
A large double V-berth is provided in the forecabin, with shelves, lockers and individual reading lights above.

Aft of the main saloon is the walkthrough to the aft cabin, with the comfortable navigator's berth and a



large access panel to the powerful diesel engine.

The luxurious aft cabin is of stateroom dimensions, complete with an en suite heads and pressure hot and cold water supply to the washbasin. Hanging lockers are provided for shoregoing clothes, and then there are fitted storage shelves above the double berth.

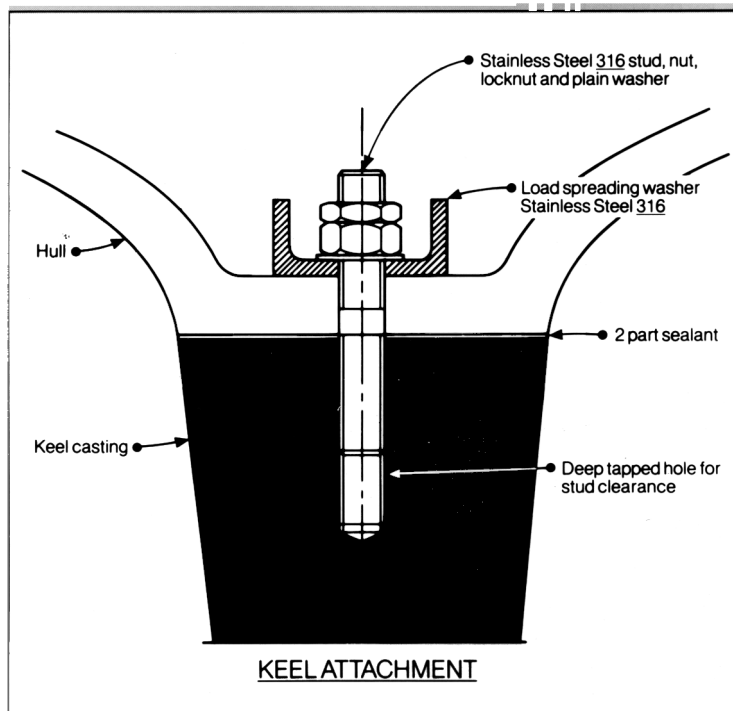


Before returning on deck, the navigation station on the port side of the companionway steps is worthy of some attention. The chart table will take a full Admiralty chart folded in half. There is a lot of storage for books and all the rest of the navigator's equipment, a curved seat for comfort at sea, and an instrumentation panel with battery condition indicator.



Throughout, the Westerly Corsair is a tribute to our craftsmen's art. The teak workshops take pride in selecting the finest timber for the woodwork below, including the solid bulkheads which are bonded into the hull to provide additional stiffening which is part of the Lloyds Hull Construction Certificate, a stringent set of standards to which each yacht is built.

Those standards demand stainless steel studs for attaching the keel to the hull. We exceed the specification by fifty per cent. The main structures of the yacht are completely laid up by hand in glassfibre which is constantly tested for strength and thickness,



KEEL ATTACHMENT

humidity. That's how Westerly yachts have gained their reputation for strength and longevity, and goes some way to explaining why a Westerly will hold its value, while all around are losing theirs.

Under sail, the Westerly Corsair is a delight to handle. The wheel steering is light and positive with a partly balanced spade rudder moulded onto a stainless steel stock. The rig has been laid out for ease of handling and even short-handed the Corsair will show a fine turn of speed,

with good form stability and a good, secure feel.

All in all, the Corsair is a yacht of which we at

Westerly and those who are already owners can feel proud. Weekend sailor or long distance cruiser, the Westerly Corsair is a serious contender.



and sealed with a double gelcoat externally and internally to the waterline. The entire process takes place under carefully controlled conditions of temperature and





SALOON



GALLEY



AFTCABIN



FORECABIN



NAVIGATOR BERTH

THE WESTERLY *Corsair II 36*

SAIL AREAS - SLOOP

Mainsail	296sq ft	27.23sq m
No 1 Genoa	540sq ft	49.68sq m
No 2 Genoa	445sq ft	40.94sq m
No 1 Jib	328sq ft	30.176sq m
No 2 Jib	228sq ft	20.97sq m
Storm Jib	115sq ft	10.58sq m
Trisail	103sq ft	9.47sq m
Radial head Glider	936sq ft	86.11sq m
Radial head Spinnaker	1296sq ft	119.23sq m
Mast Height: waterline	52' 00"	15.85 m

SPECIFICATION

Length Overall (excluding rudder)	35' 8"	10.87 m
Length Waterline	30' 5"	9.27 m
Beam	12' 6"	3.81 m
Draft	4' 11"	1.50 m

DESIGNED WEIGHTS

Displacement	15500lb	7037 kg
Ballast	6600lb	2996 kg

LLOYDS HULL CONSTRUCTION CERTIFICATE

Specifications and standard inventory are liable to change according to availability of bought in and manufactured supplies. Some items shown in the photographs are not included in the standard price.

CONSTRUCTION STANDARDS

Lloyds Hull Construction Certificate.
Double gelcoat to both external hull and internally to waterline.

Temperature and humidity controlled laminating.

Very high degree of lamination control

Quality control system with 200 Lloyds

approved items.

Our own carefully selected teak.

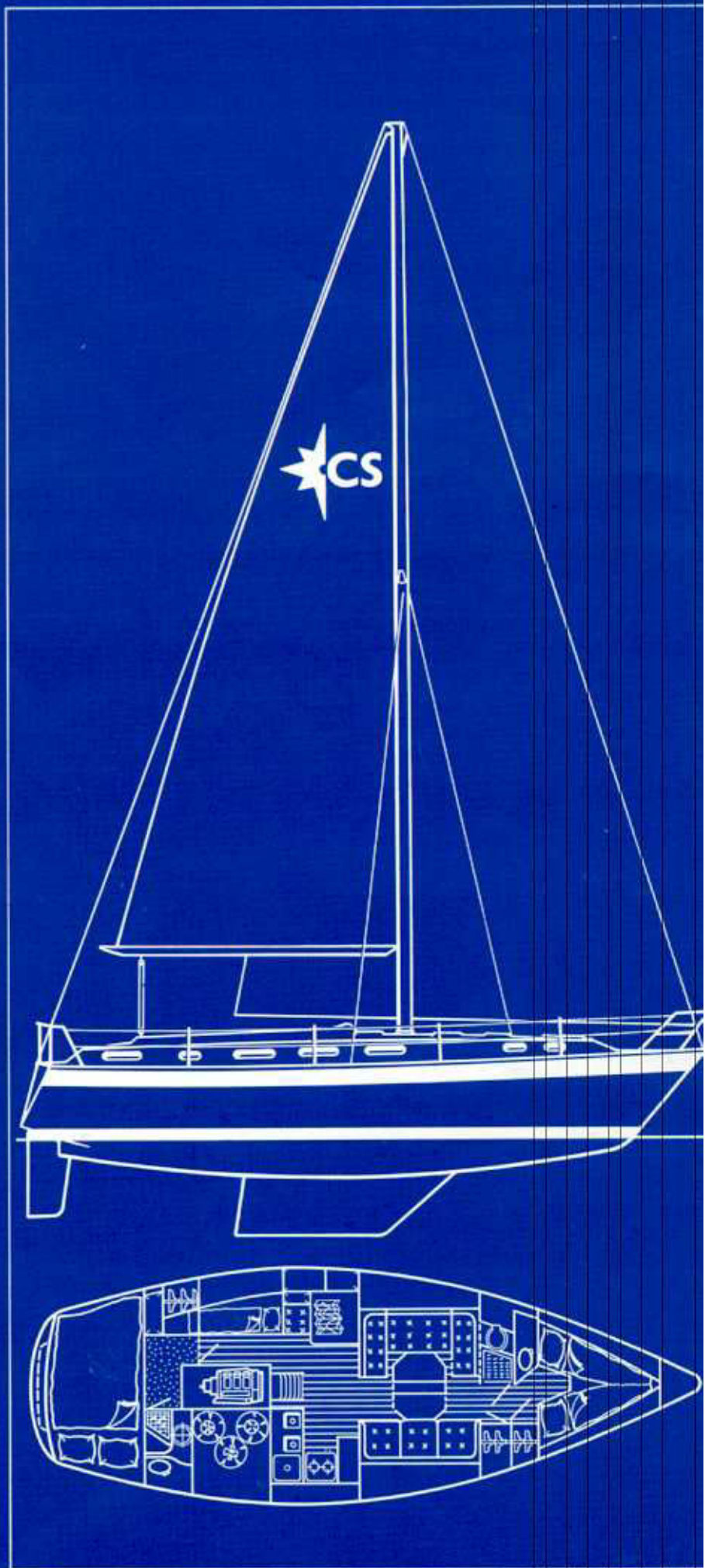
Solid teak toe rails, grab handles and rubbing strake for durability.

316 high grade stainless steel from our own fabrication factory.

Fire retardant foam in all upholstery.

Keel studs 50% over Lloyds specification with locking bolts.

316 stainless steel water tanks.



WESTERLY

Westerly Yachts Limited, 47 Aston Road,
Waterlooville, Portsmouth, Hants PO7 7XJ.
© (A subsidiary of Centreway Industries plc)

THE WESTERLY RANGE - PERFORMANCE CRUISERS - STORM 33, TEMPEST 31,
FAST CRUISERS - OCEANLORD 41, CORSAIR II 36, SEAHAWK 35, FALCON 35,
FULMAR 32, KONSORT 29, DECK SALOON CRUISERS - RIVIERA 35,
KONSORT DUO 29.

SALES OFFICES: HAMBLE POINT (0703) 455233, Brighton (0273) 600556,
Swansea (0792) 473330, Poole (0202) 700210, Ipswich (0473) 681677,
Plymouth (0752) 672828.

DISTRIBUTORS: Scotland and N. Ireland - Euroyachts Ltd. - Glasgow (041)
429 3766, S. Ireland - Neil Watson Ltd. - (0001) 806070, N. England and
N. Wales - Ditches of Bangor - (0248) 352775, Channel Islands - New Horizon
Yachts Agency - (0481) 26335, West Germany - (040) 7 42 80 81,
Netherlands - (5149) 1566, Belgium (3) 232 1210, N. France - (96) 410879,
S. France - (94) 434594, Gibraltar - Gib. 76710, Japan - (03) 210 4455,
AFTER SALES SERVICE (0705) 256406.



100 Freefone Westerly Yachts. Demonstrations available 7 days a week