

Targa 32





Targa 32

Offering three separate double cabins, a well equipped galley and heads with a 27 knot cruising speed, the Targa provides much that has so far been in the domain of larger motorboats. Designed by John Bennett, who has been responsible for many well known motor boat designs, she upholds the Westerly reputation for solidity of construction and safety. She has a bright pleasant interior and whether on a long cruise with the family or a short hop, the low noise level in the cockpit, her handling and sea-keeping qualities make her a joy to drive.

Engine Installation

The Targa is powered by twin Volvo Penta inboard diesels which provide performance with economy and a low noise level. The twin 130hp engines give a top speed of up to 27 knots and, with a 113 gallon fuel capacity a range of around 250 miles. Together with three batteries the engines are housed in a sound-proofed compartment below the saloon floor with access through four large hatches. The control fore and aft position of the engines keeps weight out of the ends of the boat and reduces pitching to a minimum. The engine room has its own lighting and an automatic electric bilge pump as well as a manual back up. Safety equipment includes remote fuel shut offs, engine temperature and oil pressure alarms.

Accommodation

Up to six people can comfortably live in the three cabin accommodation. Conventional vee-berths in the forward cabin have stowage space both under the bunks and on shelves running along the sides of the hull. There is a hanging locker to port with interior shelving. The heads has a marine W.C. and a pressured water system with a shower. A hot water system can be installed as an optional extra. There is ample room for the storage of washing gear both in a locker below the washbasin and in the glass fronted cabinet above. Other standard fixtures include a shaving socket and a towel holder with a matching soap dish. An opening port is fitted as standard and the whole compartment is lined with a washable surface.



Just aft of the heads on the portside is a spacious double cabin. Storage is provided in lockers beneath the double berth as well as in a hanging locker set into the forward bulkhead. There is a bedside cabinet with a drawer and shelf above. Two opening portlights and a large mirror running on the bulkhead above the double berth give the cabin a light and airy atmosphere.

Galley

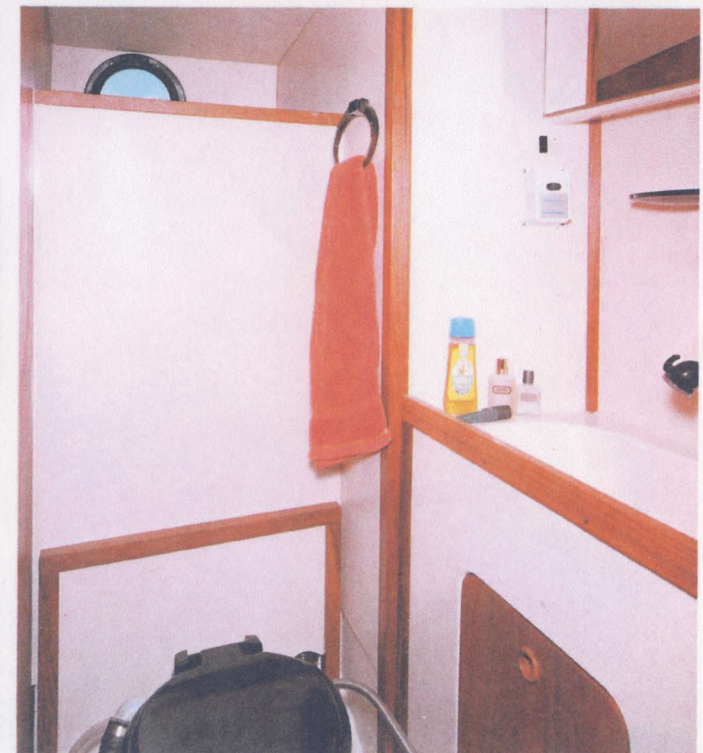
The double and forward cabin lead onto a corridor galley. This has a twin burner cooker with oven, a large galley sink with a pressured water system and a fridge, all fitted as standard. Between the cooker and sink there is a large formica topped working surface with storage cupboards beneath and forward of the sink there is a hanging locker.

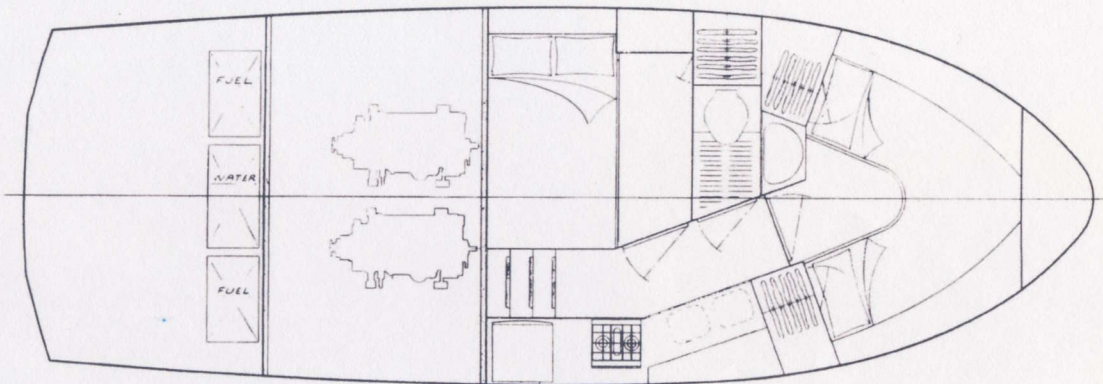
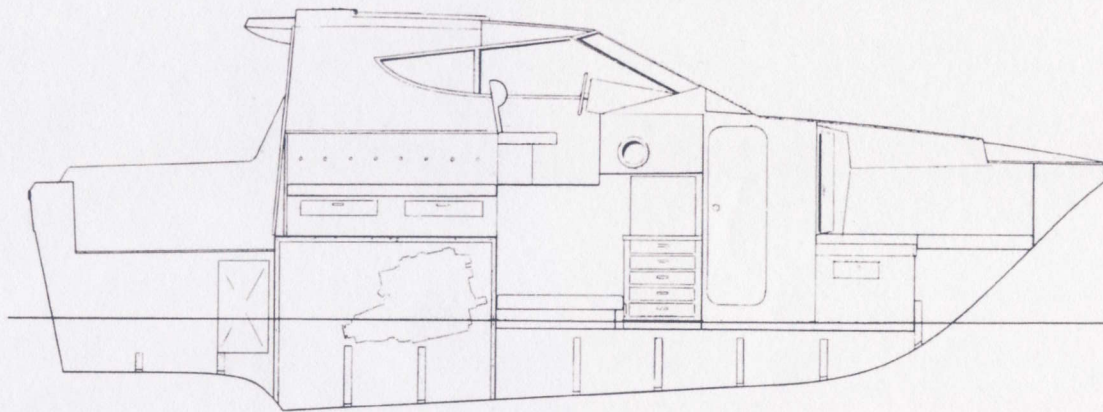
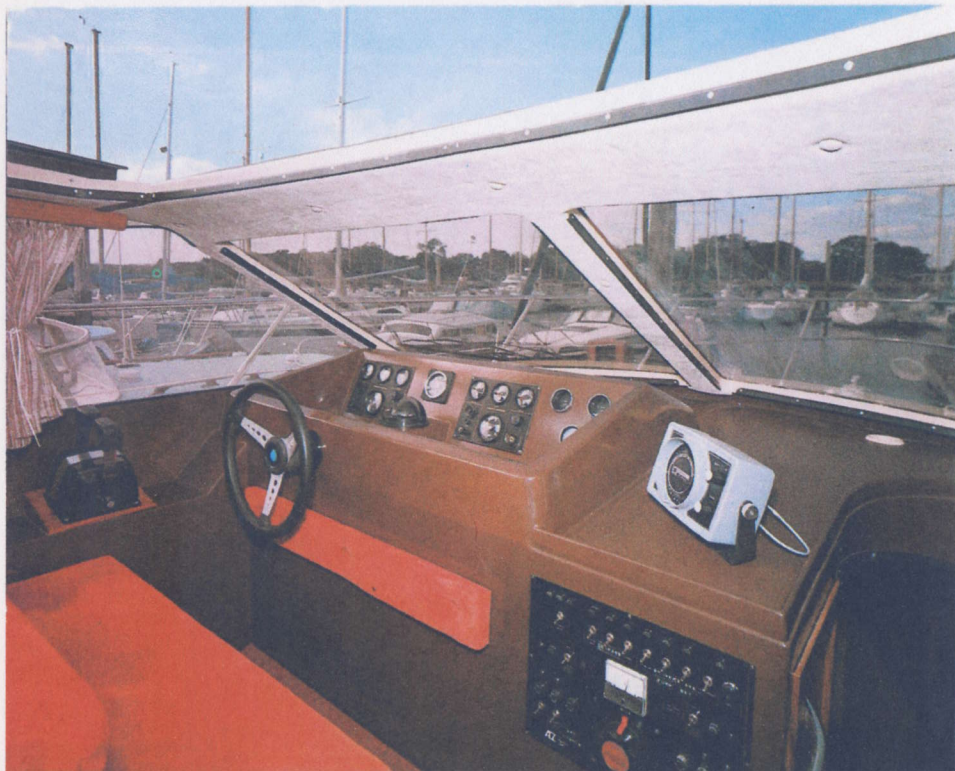
Main Saloon

The settee running the full length of the saloon on the portside of the boat is easily convertible to a double berth with locker space beneath. A line of cupboards faces the settee on the starboard side of the saloon. The dining area forward of the settee is equipped with a large bench seat which is positioned well forward and high up to give good all round vision. Above the driving position is a sliding sun roof which provides the advantages of a flying bridge without the instability and consequent rolling that such structures can cause. A large adjustable height table is also provided which is suitable for use both in the saloon and cockpit.

Deck and Cockpit

A sliding door connects the saloon to the cockpit area. The fuel tanks and 57 gallon water tank are housed beneath large locker lids in the cockpit floor. Aft of the tanks is a large area suitable for storing fenders, deck chairs and perhaps even a bicycle! In addition there are four lockers around the sides of the cockpit, and there is space below the rear cockpit seat to store a liferaft. The decks are wide enough to walk around and there is a sturdy grabrail on the superstructure roof. The 22lb anchor is stowed on a stemhead roller and is complete with 15 fathoms of chain and a Hyspeed anchor winch. A bathing platform is fitted as standard.





Technical Specification

Length overall 32' 2" (9.80 mt)
 Length waterline 26' 5" (8.05 mt)
 Beam 11' 2" (3.40 mt)
 Draught 2' 8" (0.80 mt)
 Displacement 4 tons (4064 kg)

Fuel Capacity 113 gallons (514 litres)
 Fresh Water Capacity 57 gallons (259 litres)
 Engines 2 x 130 HP
 Volvo Penta TMD 40A
 Electrical Installation 12V
 Batteries 3 x 124 Amp/hr

THAMES TONNAGE 13.94 TONS

Built by



WESTERLY MARINE

Westerly Marine Construction Limited
 Aysgarth Road, Waterlooville, Portsmouth,
 Hampshire PO7 7UF, England.

Telephone: Waterlooville (070 14) 54511

Telegrams: Westerly Portsmouth. Telex: 86328

The specification, standard inventory and furnishings are liable to change. Boats are supplied according to the specification on the Price List at the time of ordering. Some items shown in the photographs are not included in the standard price.