

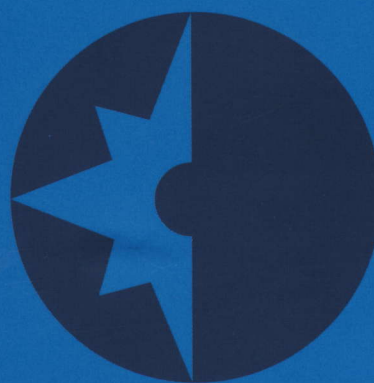


WESTERLY

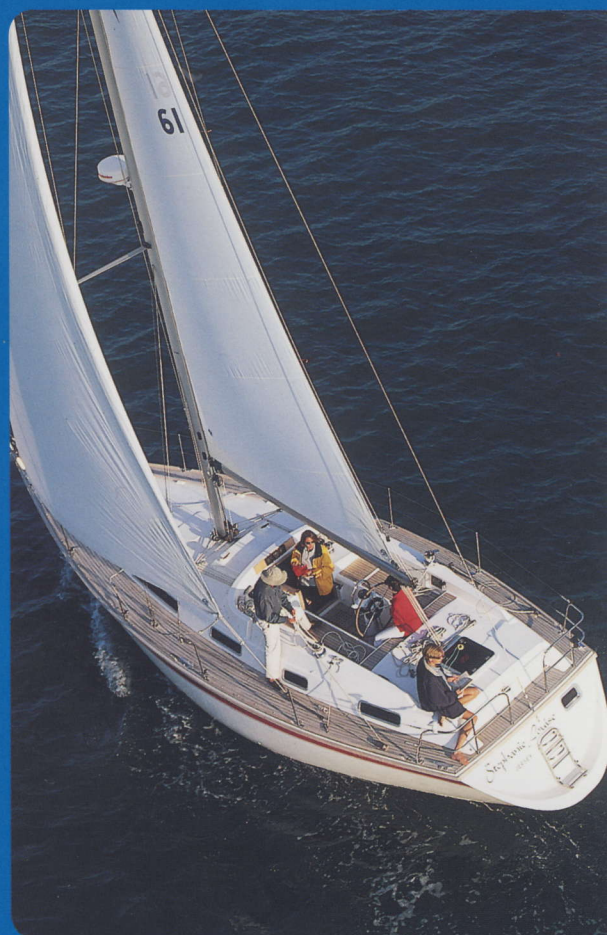
Oceanquest 35

Centre or aft cockpit

A spacious, dependable family cruiser



35





"Built to traditional Westerly standards, her dependable performance and remarkable accommodation plan sets the Oceanquest 35 apart from the rest."

Ed Dubois

Renowned for her spaciousness and comfortable cruising, the Oceanquest 35 is available in both centre and aft cockpit forms and is considered to offer the largest and most comfortable aft cabin in any 35 foot yacht.

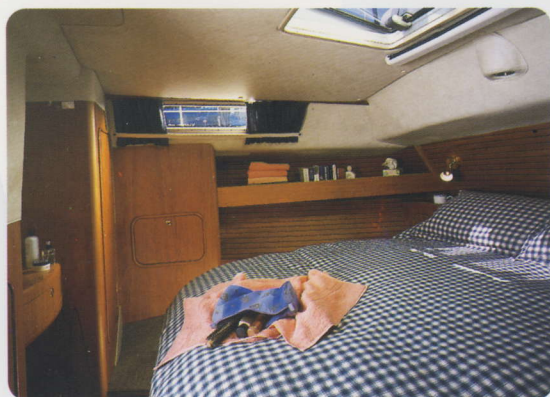
35

The Oceanquest 35 is an extremely impressive blue water family cruiser with a level of comfort and build quality that you would expect from a Westerly. While the centre cockpit version provides the benefit of an extraordinary aft cabin, the aft cockpit version is also unique having two staterooms, both with their own heads and showers.

Typical of the relationship between Westerly and the renowned designer Ed Dubois, the Oceanquest 35 combines Westerly's flair for interior design and styling with the proven expertise of one of the world's top yacht designers. Traditional in style, well balanced and supremely seaworthy, she will provide a rewarding turn of speed.

Despite the excellent accommodation space and headroom below, the Oceanquest also has wide decks for ease and safety. Remarkably there is also room for an enormous cave locker for cockpit stowage, and good sail management systems ensure she is easy to handle. A high standard of finish and attention to detail throughout demonstrates Westerly's modern style while retaining the company's traditional values of craftsmanship and luxury.





Left: Aft cabin, Oceanquest 35AC
Far left: Aft Cabin Oceanquest 35



With solid swept laid teak side-decks, roller furling headsail and self-tailing winches as standard, the Oceanquest 35, in both aft and centre cockpit forms, is clearly designed for cruising in comfort and safety.

Oceanquest 35 – Key Features

Hull

Hand laminated GRP with double white isophthalic gelcoat and trim line in your choice of colour. Teak rubbing strake gives a traditional feel while providing practical protection against damage.

Keel

A modest draft fin keel for optimum performance or twin keels for shallower draft and the ability to dry out.

Transom

A bathing platform and fold down boarding ladder make swimming easy and are essential safety features.

Cockpit

All sail handling is done from the safety of the deep cockpit with self tailing winches located easily to hand. Teak seats finish off with style, and a huge cockpit locker takes all the gear the modern cruising family needs.

Deck

As with the larger Westerlys, teak side-decks in individual 10mm swept laid planks reflect the build quality, and an abundance of handrails and wide uncluttered decks allow safe movement about the boat. Features such as double anchor roller and spring cleats are standard.

Sails

A furling genoa is standard as well as a slab reefing mainsail, and options such as a cruising chute or spinnaker have been thought out in advance and require no extra deck hardware. All lines are led back to the safety of the cockpit.

Electrical System

Two low maintenance batteries provide ample power through a changeover isolator for engine starting and domestic needs. A comprehensive switch panel is protected by circuit breakers and includes battery monitoring gauges. As well as a full set of navigation lights there is even a deck floodlight fitted as standard.

Instruments

As well as the standard compass, echo sounder and log, there is plenty of room at the chart table or in the instrument pod above the hatch for your individual choice of extra electronics.

Engine

A 30hp freshwater cooled diesel is fitted in a sound deadened engine box with easy access for maintenance – there is even an engine bay lamp.

Water System

Pressurised hot and cold water are standard at the galley and in the heads compartment where there is a washbasin and a proper pump out shower.

Interior

All woodwork is in a choice of oak or teak and there is a wide range of complementary soft furnishings. The deckhead panels are easily removable for access to wiring and services and the floorboards are made of a special teak and holly striped laminate that needs no maintenance.

Stowage

As well as stowage beneath most of the bunks, both versions of the Oceanquest 35 have ample cupboards in the main saloon and the galley, full length hanging lockers and separate wet hanging spaces.

Accommodation

The forecabin has a double berth and in the case of the aft cockpit version has access to a forward heads and shower. The settee berths are full length for those who prefer to sleep in the saloon when at sea, and the aft cabin provides a domestic size double bed, on the centreline in the centre cockpit version, and to one side of the second

en suite heads and shower in the aft cockpit version. The position of the heads in the centre cockpit boat allows the double doors to swing open and double the size of the shower space.

Navigation Area

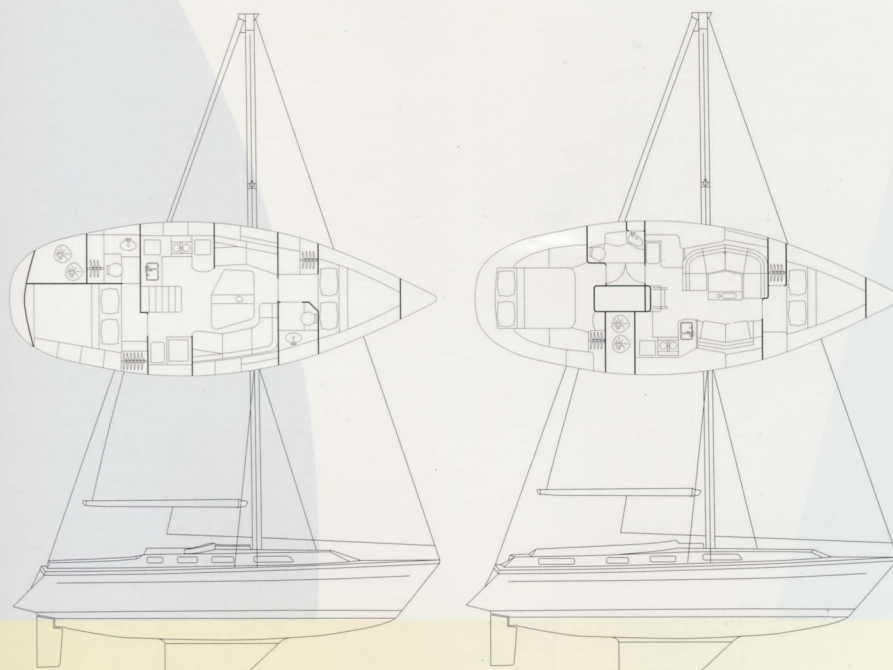
A large forward facing chart table has its own separate seat, deep stowage for charts, space for extra electronics and stowage for books.

Galley

A gimballed 2 burner cooker with oven and grill is safely situated between ample worktops with flexible storage above and below. Where many boats of this size have only ice boxes, this galley boasts a proper 12 volt refrigerated coolbox.

General Equipment

As you would expect from a Westerly the standard equipment package includes items such as anchor and chain, warps, fenders, bilge pump, emergency tiller, fire extinguisher, gaz bottle, opening stern rail, ensign socket, harness points in the cockpit, signal halyards, sailcover and a comprehensive owners manual. Your yacht is even delivered antifouled and ready for launching straight off the lorry.



Specifications

Oceanquest 35		
Length overall	34'7"	10.54 m
Length waterline	27'0"	8.23 m
Beam	12'3"	3.74 m
Draft – fin	4'6"	1.37 m
– twin	3'11"	1.19 m
Mast height (above waterline)	48'5"	14.76 m
Displacement	14,080 lb	6,387 kg
Ballast – fin	5,698 lb	2,585 kg
– twin	6,512 lb	2,954 kg
Engine	30 hp diesel	

Sail areas

Mainsail	240 sq ft	22.30 m ²
Genoa No1	485 sq ft	45.05 m ²

Perhaps the single most striking feature of the Oceanquest 35 centre cockpit is the space and privacy in the huge and well-equipped aft cabin, with walk-around centre-line double bed. Matched by a roomy forecabin, and with generous standing headroom throughout the spacious saloon, this is certainly a yacht for comfortable cruising.

In both aft and centre cockpit forms, a practical navigation station is complemented by a secure galley, with good worktop space and plenty of cupboards and refrigerated cold storage. The high standard of finish throughout is not only attractive, but also provides the welcome reassurance of Westerly's renowned attention to structural detail. And, of course, as each Westerly is built to order, you also have the opportunity to choose from a selection of materials, including wood finishes and fabrics, to create an interior of your own distinctive style.



Construction

The Oceanquest 35 is constructed with meticulous care at every stage of the building process. Experienced technicians pay special attention to the construction, ensuring inherent structural integrity. Unlike some other manufacturers who opt for lightweight cored decks, a special Firet mat is used for a tough all-polyester deck construction which allows extra fittings to be added quickly, simply and safely at any time without any additional strengthening.

Quality

Westerly's Production Director oversees every aspect of design and construction, ensuring that every facet of each boat meets the company's own stringent standards, besides meeting all the highest internationally recognised quality standards including ISO 9001 and EN 29001.

Support

As a Westerly owner you will also benefit from the continuing support and advice of the yard and the world-wide network of dealers. From insurance to maintenance and repairs and the supply of spare parts or accessories, you are guaranteed all the help you might need for as long as you sail a Westerly. There is also a very active Westerly Owners' Association which offers a range of events, services and discounts to its many thousands of members.



Your Westerly

We will be pleased to help if you need any further information to decide which Westerly is best for your own particular requirements. Please let us know if you would like any advice on financing or trade-in values – if you have a Westerly to trade in, you will be aware that they hold their value well.



The standard inventory of some models may change. Please refer to the current specification sheet. Pictures within this brochure may show a boat fitted with optional extras.

Call us for more information,
or to arrange a test sail.

Telephone +44 (0)1703 455233



WESTERLY

Westerly Group Limited
Hamble Point Marina
School Lane
Hamble
Southampton SO31 4NB
Telephone + 44 (0)1703 455233
Facsimile + 44 (0)1703 455999
e-mail: westerly@btconnect.com

A member of the Marigot Group

The Westerly range of cruising yachts
spans 33ft to 49ft

Designed and produced by Marketing Matters Limited.
Printed in England 8.97.