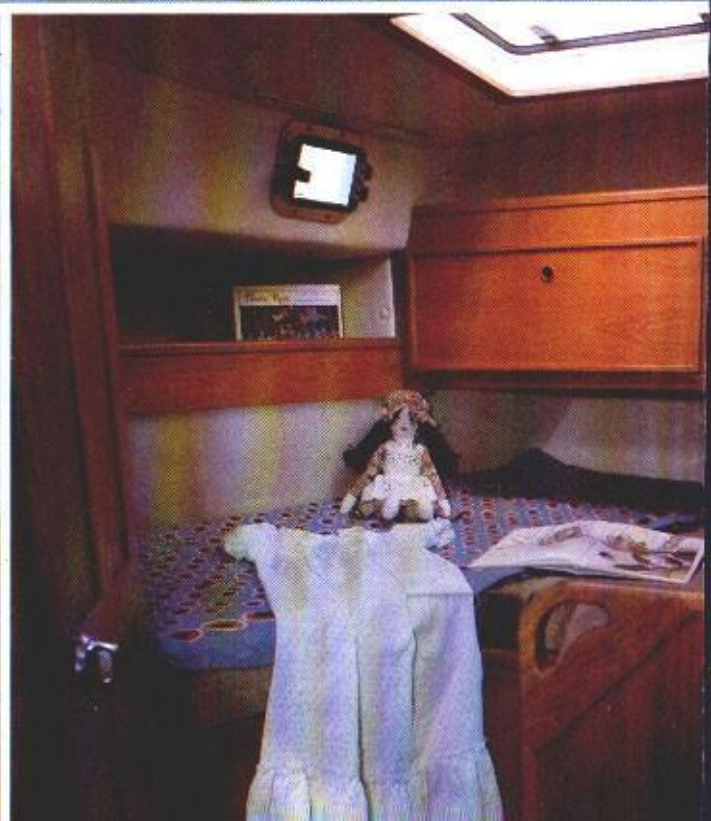
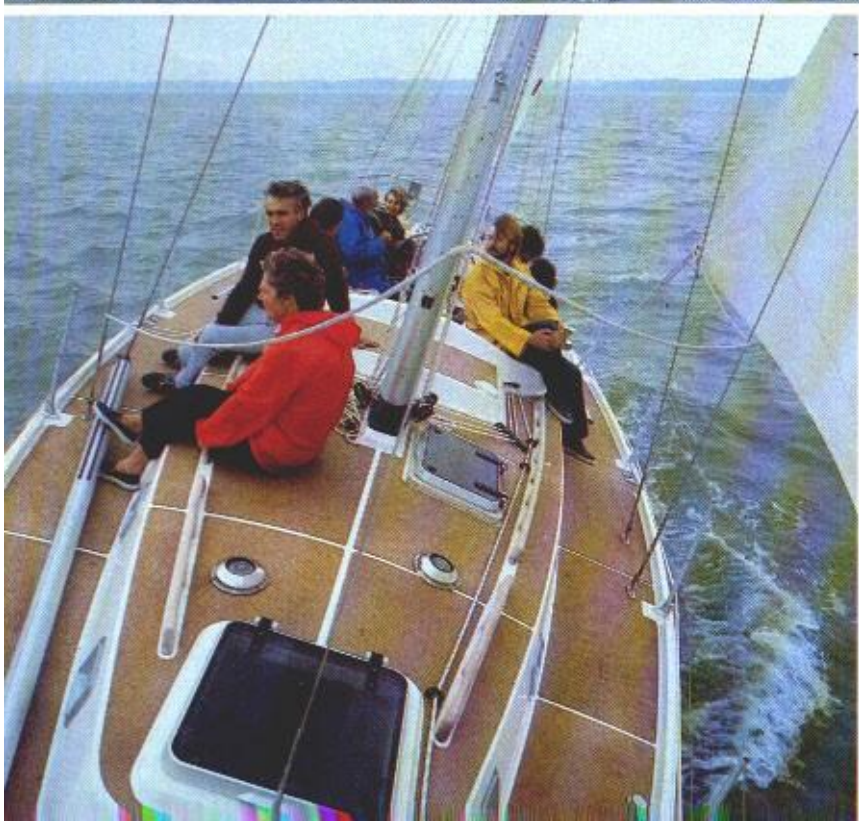
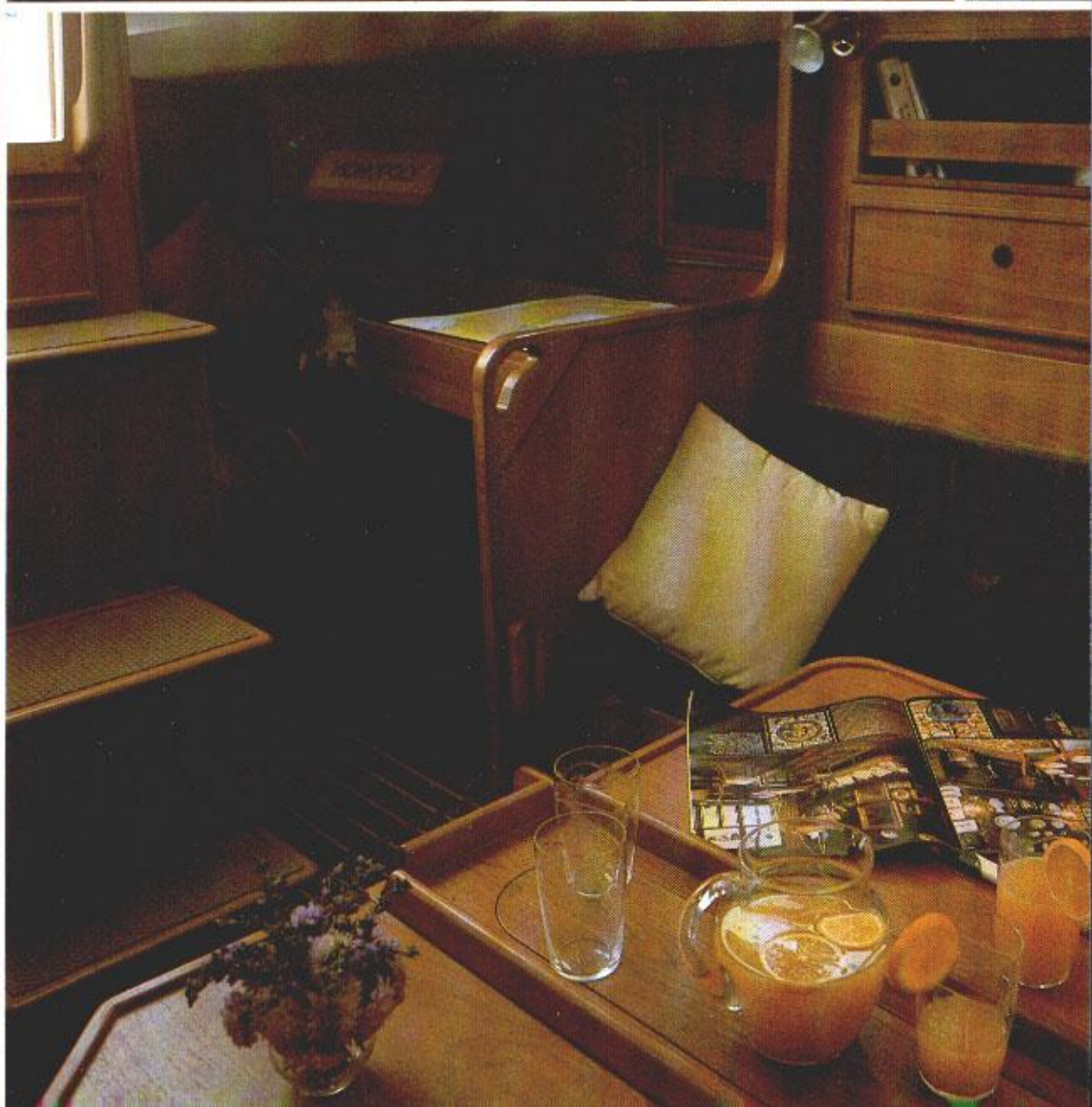
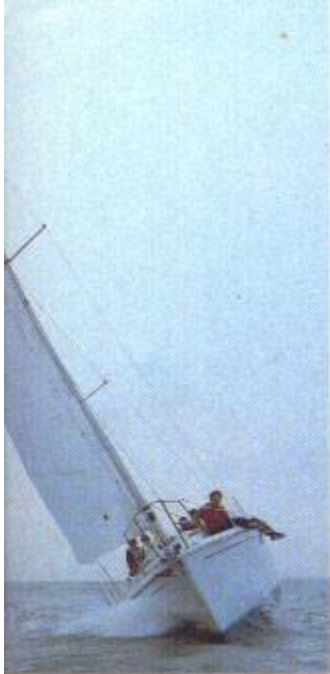


WESTERLY
CONWAY







Largest and most luxurious of Westerly's cruising yachts, the 36' CONWAY has the clean, attractive lines and powerful stem which show that she'll sail as far as you want to go in complete comfort.

Both ketch rig and sloop rig versions handle at sea like a dream – in any conditions. And despite her size, she's easy to sail solo with her lines led aft; a semi-balanced rudder makes her very responsive to the helm, and she'll go about, heave to or maintain a steady course to windward without any difficulty. (Available with Fin or Twin keels).

The cockpit is well laid-out, spacious and comfortable to work in, with excellent all-round visibility and all the controls and instrumentation right to hand. Treadmaster is fitted on all the

deck surfaces for safety with the cockpit seats in laid teak. There are wide side decks with double lifelines and robust teak grab rails along both sides of the coach roof. The bottle screws, chain plates and other deck fittings are all solidly constructed and built to give you years of service; another example is the 45lb anchor, stowing neatly on the double sternhead roller and being easily handled by the deck-mounted winch.

The spacious layout below decks is one of Laurent Giles' very best designs, with the accommodation arranged in three cabins. The forecabin has two full length single vee-berths which can be quickly converted to form one large double. There are two electric lights, two opening portholes and further ventilation provided by the forward hatch. Immediately aft are two hanging lockers which drain directly into the bilge, making them suitable for storing both shore clothes and oil skins. The forward locker door doubles as a door for the forecabin. Opposite, on the port side, is a well-equipped heads compartment with marine WC and shower.

The main saloon is planned conventionally, with comfortable settee berths on each side, the port berth can quickly be converted to a full double. The fixed central table's flaps can be raised with a drinks locker in the centre. The joinery is all finished in teak, which adds to the stylish and luxurious atmosphere, while illumination is provided by an elegant pair of adjustable copper lights.

Aft of the saloon is the navigation area, with its own integral berth, beyond which is the owner's double suite which is reached by a passage way. Two more hanging lockers and a separate heads compartment with marine WC and wash basin. Here there are two large single berths (easily converted to an enormous double), a set of drawers underneath the after deck, and deep shelves along the sides of the hull.

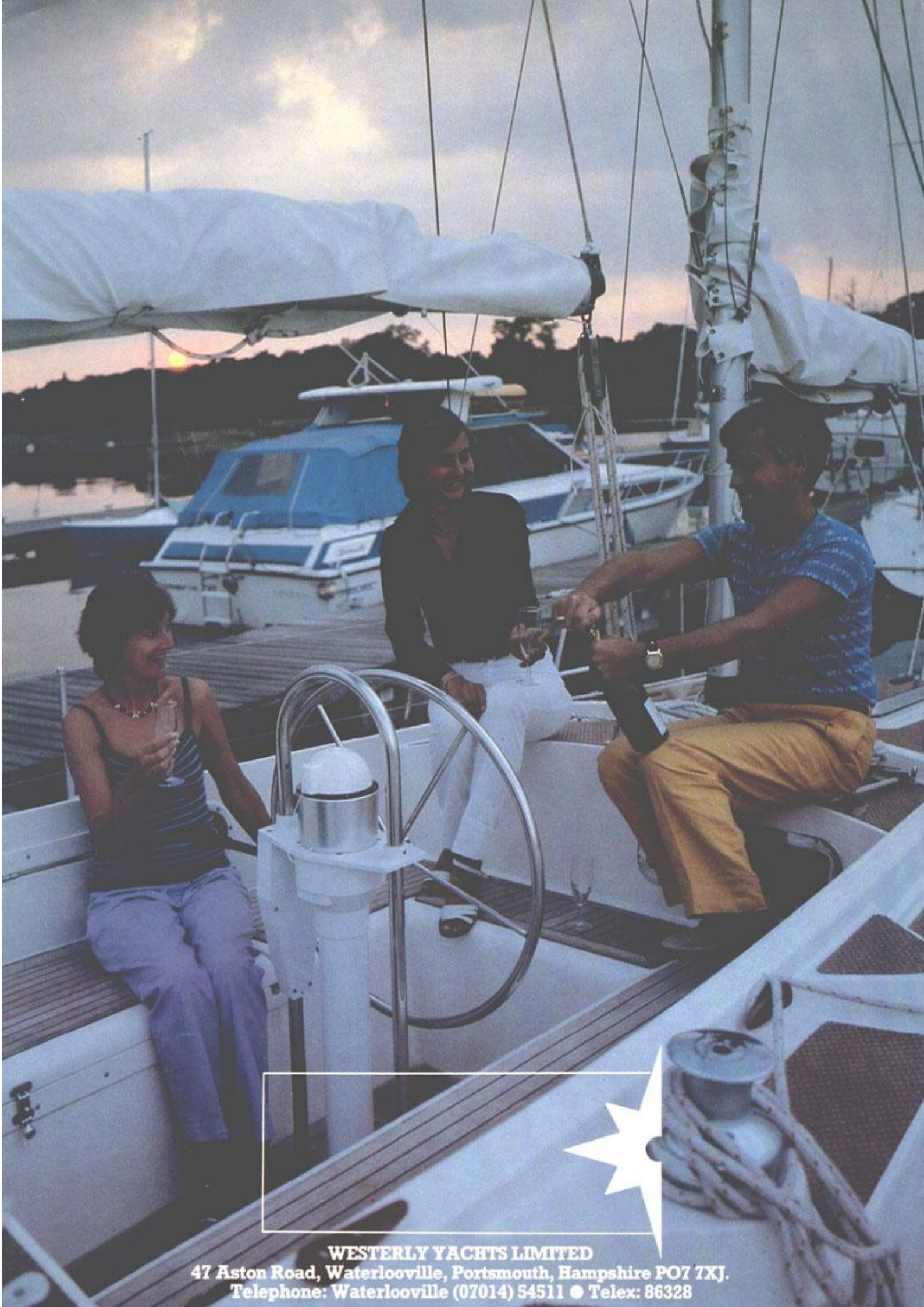
Clearly lit by a single fluorescent strip light, the galley has everything you need to make meal preparation easy. The gimballed cooker has an oven, grill and two burners, fed along seamless copper piping from a pair of gas bottles in their own vented compartment in the cockpit locker. A cover for the cooker provides an extra worktop. The stainless steel sink is supplied with hot and

cold pressurised water. There's also a capacious ice box, and numerous lockers and racks for cooking utensils, crockery and cutlery.

The engine is a smooth and powerful 3-cylinder 36 hp Volvo diesel, capable of a steady cruising speed of around 7 knots. Fuel economy is excellent, the 35-gallon tank giving a cruising range in excess of 200 miles. The CONWAY's quick and emphatic response to engine power, and her tight turning circle (approx. 1 1/2 times her own length) make for excellent manoeuvrability in busy marinas or other confined spaces. Two batteries are charged by the engine alternator, and a heat exchanger supplies hot water to the galley and heads compartments.

All aspects of the CONWAY's construction are undertaken to Lloyd's specifications of quality, and a Lloyd's Hull Construction Certificate is issued to every model. With her excellent sea-keeping qualities and the proven ability to make good time over even the longest distances, this outstanding cruiser carries the promise of consistent performance and exceptional comfort on every voyage you make.





WESTERLY YACHTS LIMITED
47 Aston Road, Waterlooville, Portsmouth, Hampshire PO7 7XJ.
Telephone: Waterlooville (07014) 54511 ● Telex: 86328

WESTERLY Conway

SAIL AREAS - KETCH RIG

Mainsail	239 sq. ft.	22.2 sq. m.
Mizzen	69 sq. ft.	6.4 sq. m.
No. 1 Genoa	435 sq. ft.	40.4 sq. m.
No. 2 Genoa	334 sq. ft.	31.0 sq. m.
No. 1 Jib	220 sq. ft.	20.4 sq. m.
No. 2 Jib	110 sq. ft.	10.2 sq. m.
Mizzen Staysail	197 sq. ft.	18.3 sq. m.
Spinnaker	1070 sq. ft.	99.4 sq. m.

SLOOP RIG

Mainsail	282 sq. ft.	26.2 sq. m.
No. 1 Genoa	450 sq. ft.	41.8 sq. m.
No. 2 Genoa	334 sq. ft.	31.0 sq. m.
No. 1 Jib	220 sq. ft.	20.4 sq. m.
No. 2 Jib	110 sq. ft.	10.2 sq. m.
Spinnaker	1145 sq. ft.	106.4 sq. m.

SPECIFICATION

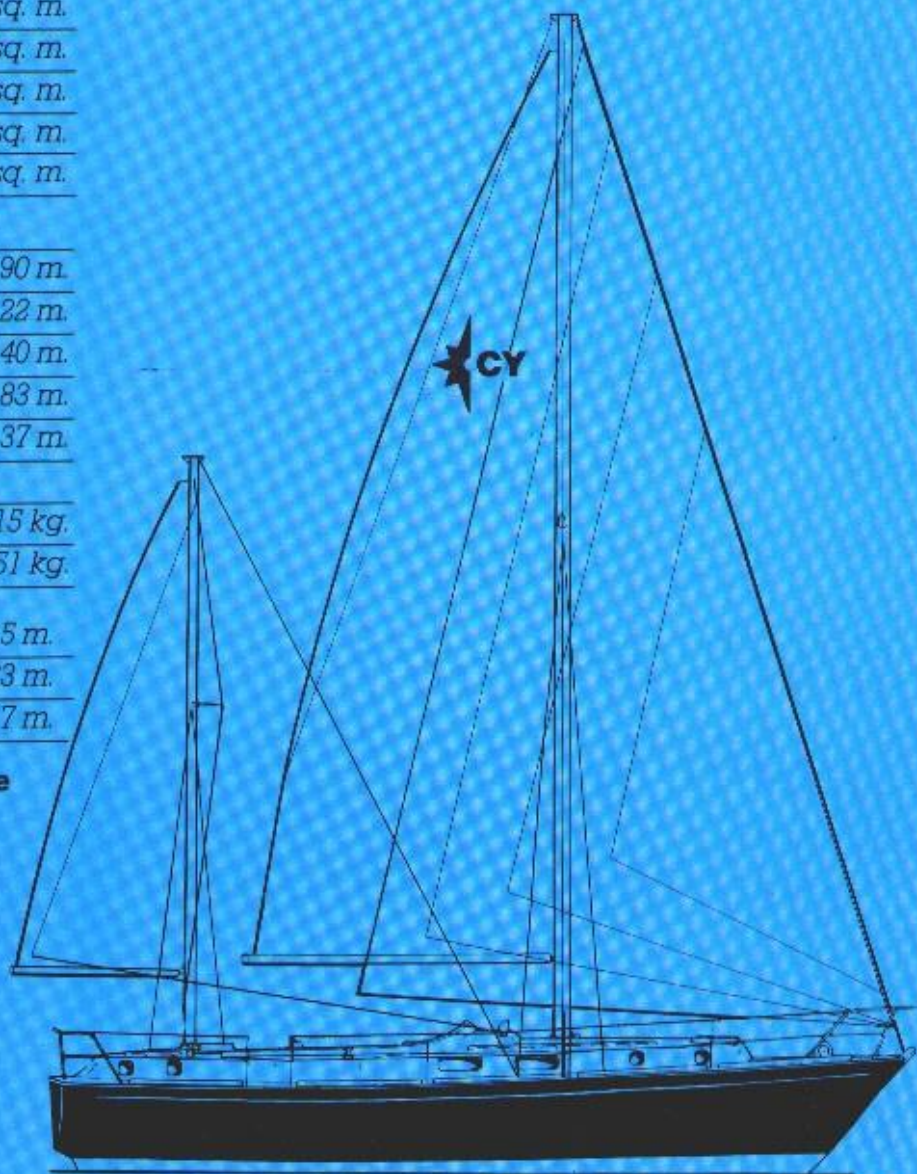
Length overall	35' 9"	10.90 m.
Length waterline	30' 3"	9.22 m.
Beam	11' 2"	3.40 m.
Draft - Fin Keel	6' 0"	1.83 m.
Draft - Twin Keels	4' 6"	1.37 m.

DESIGNED WEIGHTS

Displacement	16128 lbs.	7315 kg.
Ballast	7168 lbs.	3251 kg.
Mast length (Ketch)		
Mainmast	41' 0"	12.5 m.
Mizzen	23' 6"	7.23 m.
Sloop	44' 10"	13.7 m.

Lloyds Hull Construction Certificate

Westerly Yachts Limited,
47 Aston Road, Waterlooville, Portsmouth, Hampshire PO7 7XJ
Telephone: Waterlooville (07014) 54511 Telex: 86328



A subsidiary of
Centreway Industries plc

The boat as described, to specifications and standard inventory are liable to change according to availability of bought in and manufactured supplies. Some items shown in the photographs are not included in the standard price.

SPECIFICATION/PRICE LIST/ORDER FORM

WESTERLY YACHTS LIMITED
 47 Aston Road, Waterlooville, Portsmouth PO7 7UF, Hampshire
 Telephone: Waterlooville (070 14) 54511. Telex 86328

Name _____	Sail No _____	
Address _____	Boat Name _____	
_____	Delivery Date/Place _____	
Business Tel No _____	CONWAY W36	SLOOP
Home Tel No _____	AFT CABIN	KETCH
Date _____		FIN KEEL
		TWIN KEELS

STANDARD SPECIFICATION

Sails and Rigging: Ratsey & Lapthorne mainsail and no 1 jib. Kemp silver anodised mast and boom. Terylene main and jib halyards led aft. Topping lift and burgee halyard. Stainless steel standing rigging. Terylene running rigging. Slab reefing with lines led aft. Kicking strap. PVC blue mainsail cover. ADDITIONAL ON KETCH: R & L mizzen sail. Mast and boom. Standing and running rigging. Blue mizzen sail cover. Barlow 16c mizzen halyard winch.

Deck Fittings: Two top action two speed Barlow 19c main & jib halyard winches. Two top action two speed Barlow 25c foresheet winches. Two 8" handles. Stainless steel double rail bow and stern pulpits. Gate in stern pulpit. Stainless steel double lifelines with 24" stanchions. Plastimo Olympic 100 binnacle compass. Seafarer 5 echo sounder. Sliding jib sheet leads. Spinnaker deck hardware excluding spinnaker winches & boom. Twin bow rollers. 45lb anchor. 15 fathoms 5/16" calibrated chain. Anchor winch. Two bow cleats. Two 'midships cleats. Two stern cleats. Two bow fairleads. Stainless steel shroud and stay plates. Ensign staff socket on stern pulpit. Teak handrails on cabin top. Teak cockpit grating. Treadmaster on deck. Teak cockpit seats. Bi-colour pulpit mounted navigation light. Stern light. Steaming light. Deck light. Wheel steering with emergency tiller, rod steering system & binnacle guard. Six fenders. Two 30' mooring lines.

Cabin Fittings: Lights in all cabins and in heads. Chart light. Central fuse and switch panel. Complete set of 4" berth cushions. Double berth conversion in saloon, forward and aft cabins. Teak strip flooring throughout. Foam backed deckhead panels in saloon and forward and aft cabins. Cabin sides lined in foam backed vinyl. Chart table and stowage. Fixed saloon table with bottle stowage. Galley with gas cooker, oven and grill with fiddle in gimbals. Stainless steel sink. Drained ice box. Work surfaces. Crockery and cutlery stowage. Heads with Lavac marine WC, stainless steel wash basin and shower. Hot and cold pressurised water supply to heads and galley from 60 gallon stainless steel water tank with back-up foot pump at galley. Two hanging lockers forward. Opening ports in forward cabin, heads and hanging locker. Curtain rails and runners in all cabins and in heads. Ventilators in main, forward cabin and in heads. GRP main hatch and perspex forward hatch. Perspex deck hatch in saloon. Dry powder fire extinguisher. AFT CABIN: Separate heads with Lavac marine WC and stainless steel wash basin. Two hanging lockers. Drawers & stowage lockers. Opening ports. Lights over berths and in heads. Perspex hatch.

Engine: 36hp Volvo Penta MD17D. Flexible mountings. 50 amp alternator. Three bladed propeller. Water cooled exhaust. Two 90 amp batteries with changeover switch. 35 gallon fuel tank. Electric start. Instrument panel. Remote controls and stern gland. Light & sound deadening in engine compartment.

General: White hull. Alloy framed windows. Teak rubbing strake. Cove line. Antifouling. Bronze seacocks and underwater skin fittings. Cathodic Protection. Self-draining cockpit. Bilge pump. Lloyd's Hull Construction Certificate.

NOTES: 1. A £500 deposit reserves a boat at the current price for a specified delivery date. This payment is made subject to contract.
 2. Payment required: half the total less initial £500 deposit on signature of the contract. Balance 10 days before completion of the boat in the factory.

The standard specification and inventory as described is liable to change according to the availability of bought in and manufactured items.

THIS PRICE LIST AND SPECIFICATION SUPERSEDES ALL PREVIOUS LISTS

August 31, 1982

NAME	CONWAY W36 SAIL NUMBER	VAT EXCLUDED
FACTORY FITTED ADDITIONAL EQUIPMENT		
Sails and Sailing Gear: Ratsey & Lapthorn		£
No 2 jib)	148
Light weather genoa)	478
No 1 genoa)	430
No 2 genoa)	330
Spinnaker radial head) -sloop rig	502
Spinnaker cross cut)	464
Cruising chute - radial head)	454
		147 -
No 2 jib)	447 -
Light weather genoa)	400
No 1 genoa)	330 -
No 2 genoa)	187 -
Mizzen staysail) -ketch rig	85 -
Mizzen staysail gear)	470
Spinnaker radial head)	414
Cruising chute - radial head)	80
Cruising chute gear - 2 blocks, halyard & sheet led aft		120
Spinnaker gear with sheets, blocks, halyards & lifts led aft (excluding spinnaker boom).		184
Spinnaker boom - bearing out spar		18
Spinnaker boom deck stowage		
Navigation Aids:		
Mechanical Sunlog speed and distance indicator		184 -
Deck Fittings:		
Barlow 27c Two speed sheet winches in lieu standard		292 -
Spinnaker sheet winches Barlow 25c Two speed		271
Fixed polycarbonate windscreen		210 -
Folding canvas sprayhood to fit windscreen - blue or beige		280 -
Folding canvas pramhood - blue or beige		316
Cabin Fittings:		
Additional dry powder fire extinguisher		18
General:		
Cradle for fin keel		462
Builders Certificate - SEE NOTE ON BUILDERS CERTIFICATES BELOW		N/C
DTI Registration		250
Delivery Hamble Point including wet or dry launch		100 -
Commissioning at Hamble Point		FREE
Delivery elsewhere by quotation. Customer responsible for hire of crane at delivery point.		
Name painting on stern. Mandatory for registered boats		37* -
Name painting on stern in Gold Leaf		50* 2,579
Engine winterisation only		55 39,990
*Standard style letters in single colour. Over 10 letters £3.50 p.l. (Gold Leaf £4.70 p.l.)		435

FOR BUILDERS CERTIFICATE - FULL NAME(S) & OCCUPATION(S) _____

COLOURS:	Please ring colour required:						
CABIN CUSHIONS	Samples on request						
ANTI FOULING	White	Red	Blue	Green			
COVE LINE	White	Red	Blue	Green	Gold		
BROAD TRIM LINE	White	Red	Blue	Green	Gold	£200	
WATERLINE STRIPE	White	Red	Blue	Green	Gold	£ 30	
DECK TREADMASTER	Blue	Fawn					

NB For boats delivered to Hamble Point for storage ashore, launching and mast stepping will be chargeable.

WE REGRET WE ARE UNABLE TO FIT ANY CUSTOMER SUPPLIED EQUIPMENT DURING BUILDING.

August 31, 1982

Handwritten calculations:
 2,579
 39,990
 435
 43,004
 6,451
 49,455
 + 150 = 50,155
 + 3,071/16 = 53,226
 x 1.80 = \$89,019
 = \$5.52/16