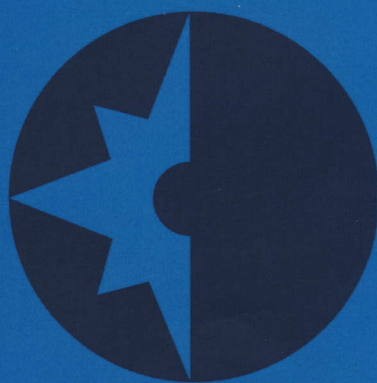




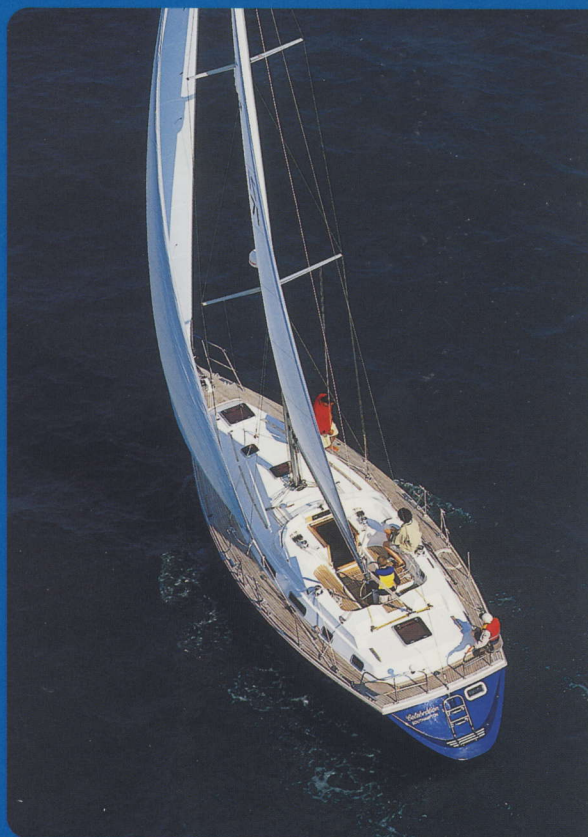
WESTERLY

Oceanranger 38

A blue water cruiser with style



38





"The Oceanranger 38 is the true 'go anywhere' cruising yacht"

Ed Dubois

The Oceanranger 38 is designed to handle long passages in safety and comfort, but is equally suited to coastal cruising in home waters. Safe and simple to sail, she can be easily managed by a crew of two.

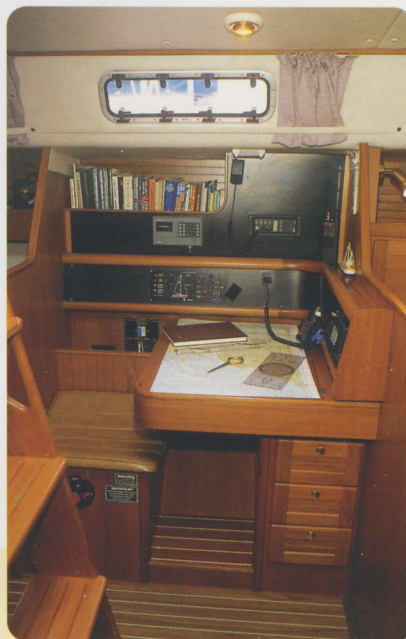
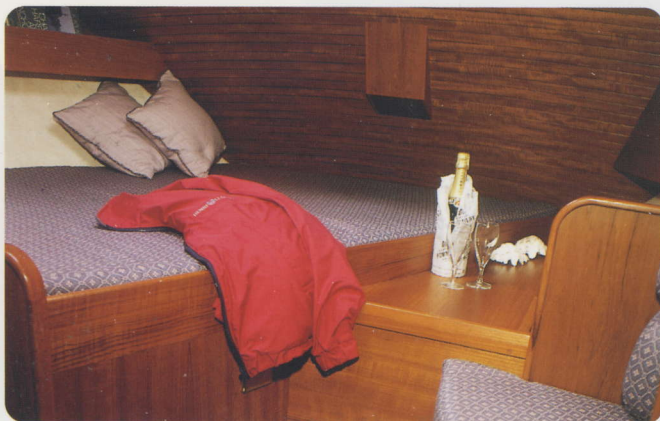
38

With an excellent standard of accommodation and comfort both topsides and below, the Oceanranger 38 will provide happy sailing over long distances and plenty of space and comfort when in port or at anchor.

Delivering more than just safe and comfortable cruising, the Oceanranger 38 also demonstrates a powerful level of performance, as befits a yacht designed in conjunction with top naval architect Ed Dubois. The high standard of finish and attention to detail in every aspect of her construction and fitting out is typical of Westerly's traditional values of craftsmanship and luxury.



The deep centre cockpit of the Oceanranger 38 is a must for sailing comfort and safety, keeping the worst of the weather off helm and crew. With roller reefing, and all sail controls led back to the cockpit, sail handling is made easy and safe with little need to go forward. But when you do, swept laid teak side-decks provide a sure foothold as well as enhancing the traditional style of this masterly design.



Oceanranger 38 -Key Features

Hull

Hand laminated GRP with double white isophthalic gelcoat and trim line in your choice of colour. Teak rubbing strake gives a traditional feel while providing practical protection against damage.

Keel

A modest draft cast iron keel for optimum performance with a long straight base to facilitate drying out.

Transom

A bathing platform and fold down boarding ladder make swimming easy and are essential safety features.

Cockpit

All sail handling is done from the safety of the deep cockpit with self tailing winches located easily to hand. Teak seats and a teak grating finish off with style, and a huge cockpit locker takes all the gear the modern cruising family needs.

Deck

As with all the larger Westerlys, teak side-decks in individual 10mm swept laid planks reflect the build quality and an abundance of handrails and wide uncluttered decks allow safe movement about the boat. Features such as double anchor roller and spring cleats are standard and the manual anchor windlass takes all the strain.

Sails

A furling genoa is standard and there is a choice between slab reefing mainsail and in-mast furling. Options such as a cruising chute or spinnaker have been thought out in advance and require no extra deck hardware. All lines are led back to the safety of the cockpit.

Electrical System

Two low maintenance batteries provide ample power through a changeover isolator for engine starting and domestic needs. A comprehensive switch panel is protected by circuit breakers and includes battery monitoring gauges. As well as a full set of navigation lights there is even a deck floodlight fitted as standard.

Instruments

As well as the standard compass, echo sounder and log, there is plenty of room at the chart table or in the instrument pod above the hatch for your individual choice of extra electronics.

Engine

A 30hp freshwater cooled diesel is fitted in a sound deadened engine box with easy access for maintenance – there is even an engine bay lamp.

Water System

Pressurised hot and cold water are standard at the galley and in the two heads compartments, each with a washbasin and a proper pump out shower.

Interior

All woodwork is in a choice of oak or teak and there is a wide range of complementary soft furnishings. The deckhead panels are easily removable for access to wiring and services and the floorboards are made of a special teak and holly striped laminate that needs no maintenance.

Stowage

As well as stowage beneath most of the bunks, the Oceanranger has ample cupboards in the main saloon and the galley, full length hanging lockers in each cabin and separate wet hanging spaces.

Accommodation

The forecabin has two single berths with an infill to make a double. The saloon settee berths are full length for those who prefer to sleep in the saloon when at sea, although there is a separate sea berth aft of the navigation station. The aft cabin provides a domestic size double bed, a small settee and the second en suite heads and shower.

Navigation Area

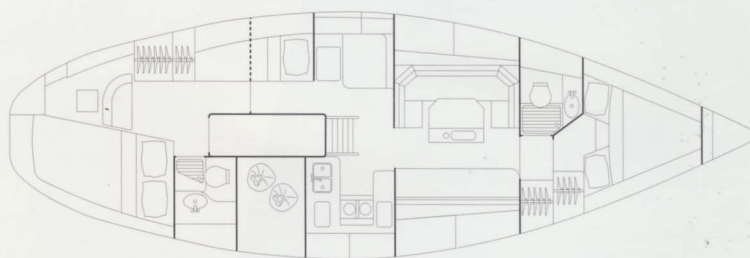
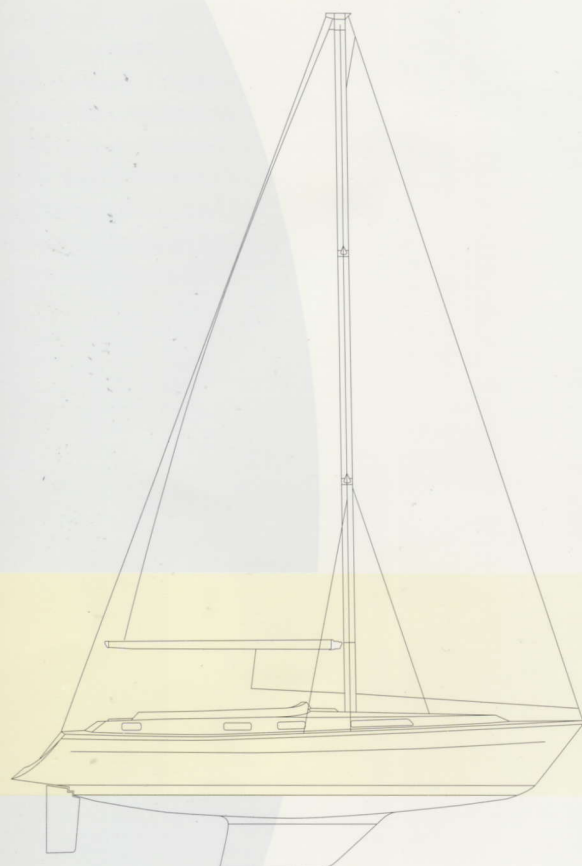
A large forward facing chart table has its own separate seat, deep stowage for charts, space for extra electronics and stowage for books.

Galley

A gimbaled 2 burner cooker with oven and grill is safely situated between ample worktops with flexible storage above and below. Twin sinks are served by a mixer tap and there is space for an optional microwave.

General Equipment

As you would expect from a Westerly the standard equipment package includes items such as anchor and chain, warps, fenders, bilge pump, emergency tiller, fire extinguisher, gaz bottle, opening stern rail, ensign socket, harness points in the cockpit, signal halyards, sailcover and a comprehensive owners manual. Your yacht is even delivered antifouled and ready for launching straight off the lorry.



Specifications

| | | |
|----------------------------------|--------------|----------|
| Oceanranger 38 | | |
| Length overall | 38'0" | 11.58 m |
| Length waterline | 30'9" | 9.37 m |
| Beam | 12'8" | 3.86 m |
| Draft | 5'0" | 1.52 m |
| Mast height (above waterline) | 52'0" | 15.85 m |
| Displacement | 15,900 lb | 7,212 kg |
| Ballast | 6,600 lb | 2,994 kg |
| Engine | 30 hp diesel | |

Sail areas

| | | |
|-----------|-----------|---------|
| Mainsail | 296 sq ft | 27.50 m |
| Genoa No1 | 540 sq ft | 50.17 m |

An owner's en-suite stateroom, with traditional style bed and plenty of storage space, is positioned aft, with a further cabin forward and a sea berth close to the navigation station. The navigation area will accommodate the requirements of the most demanding skipper, with adequate storage and mounting space for both traditional and modern navigational aids, books and charts.

The cleverly thought-out U-shaped galley features all you need for long passages or sustained cruising, serving a comfortable saloon with settees that can double as practical sea berths when under way.

The high standard of finish throughout serves to emphasise Westerly's renowned attention to detail: invaluable reassurance when undertaking long voyages. And, of course, as each Westerly is built to order you also have the opportunity to choose from a selection of wood finishes, materials and fabrics to create an interior of your own distinctive style.



Construction

The Oceanranger 38 is constructed with meticulous care at every stage of the building process. Experienced technicians pay special attention to the construction, ensuring inherent structural integrity. Unlike some other manufacturers who opt for lightweight cored decks, a special Firet mat is used for a tough all-polyester deck construction which allows extra fittings to be added quickly, simply and safely at any time without any additional strengthening.

Quality

Westerly's Production Director oversees every aspect of design and construction, ensuring that every facet of each boat meets the company's own stringent standards, besides meeting all the highest internationally recognised quality standards including ISO 9001 and EN 29001.

Support

As a Westerly owner you will also benefit from the continuing support and advice of the yard and the world-wide network of dealers. From insurance to maintenance and repairs and the supply of spare parts or accessories, you are guaranteed all the help you might need for as long as you sail a Westerly. There is also a very active Westerly Owners' Association which offers a range of events, services and discounts to its many thousands of members.



Your Westerly

We will be pleased to help if you need any further information to decide which Westerly is best for your own particular requirements. Please let us know if you would like any advice on financing or trade-in values – if you have a Westerly to trade in, you will be aware that they hold their value well.



The standard inventory of some models may change. Please refer to the current specification sheet. Pictures within this brochure may show a boat fitted with optional extras.

Call us for more information,
or to arrange a test sail.

Telephone +44 (0)1703 455233



WESTERLY

Westerly Group Limited
Hamble Point Marina
School Lane
Hamble
Southampton
SO31 4NB
Telephone + 44 (0)1703 455233
Facsimile + 44 (0)1703 455999

A member of the Bowman Group

The Westerly range of cruising yachts
spans 33ft to 49ft

Designed and produced by Marketing Matters Limited.
Printed in England 8.97.