

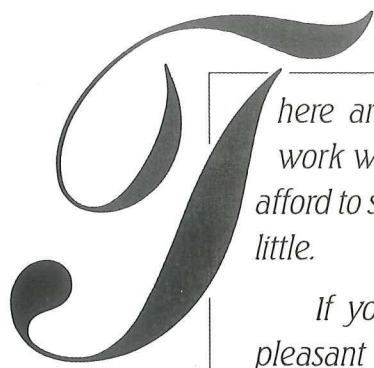
W E S T E R L Y

S E A C R A F T S M A N S H I P



 **WESTERLY**  
*Oceanlord 41*





here are some things in life which make all the hard work worthwhile. Like reaching the stage when you can afford to spare the time and the money to indulge yourself a little.

If your passion is for sailing, you're faced with the pleasant task of choosing the yacht that's right for you. One that reflects what you've achieved, and one that has the capability to match what you want to achieve.

You might aspire to an extended cruise to the Caribbean, or look forward to exploring the harbours of the Mediterranean. You may want to spend some time revisiting haunts on the British coast. The Westerly Oceanlord will take you anywhere you want to go, in total comfort and enviable style.

Even alongside in your home port, the Oceanlord is impressive with its elegant, smooth lines sweeping aft to the scoop transom – a sight to gladden the owner's heart.

Stepping aboard, the first impression is one of reassuring Westerly quality. The deck fittings have a good, solid feel to them, and closer inspection reveals thoughtful touches like the solid teak rubbing strake, midships spring cleats and double stainless steel bow rollers.

In design, too, we only use the best. Ed Dubois, one of Britain's leading yacht designers, developed the Oceanlord to be more than just a luxury live-aboard yacht. She's a joy to sail, too.

With a moderate fin keel and long waterline, the Oceanlord offers fast, exciting sailing with sound seakeeping qualities. All the essential lines are led back to the deep roomy cockpit, with large winches carefully







*placed to make them safe and easy to work.*

*You can specify roller reefing on both the fore and main sails, allowing the yacht to be simply handled by two. As you'd expect, the deck fittings are well up to the jobs they have to do.*

*There's a 43hp turbo diesel engine, which can power the Oceanlord at hull speed with power to spare. Yet handling under power is viceless and precise.*

*Going below, it's hard to believe that the Oceanlord is a production yacht. The generous wraparound sofas in the light, airy saloon are covered in high quality designer fabrics, and the lockers are in solid teak.*

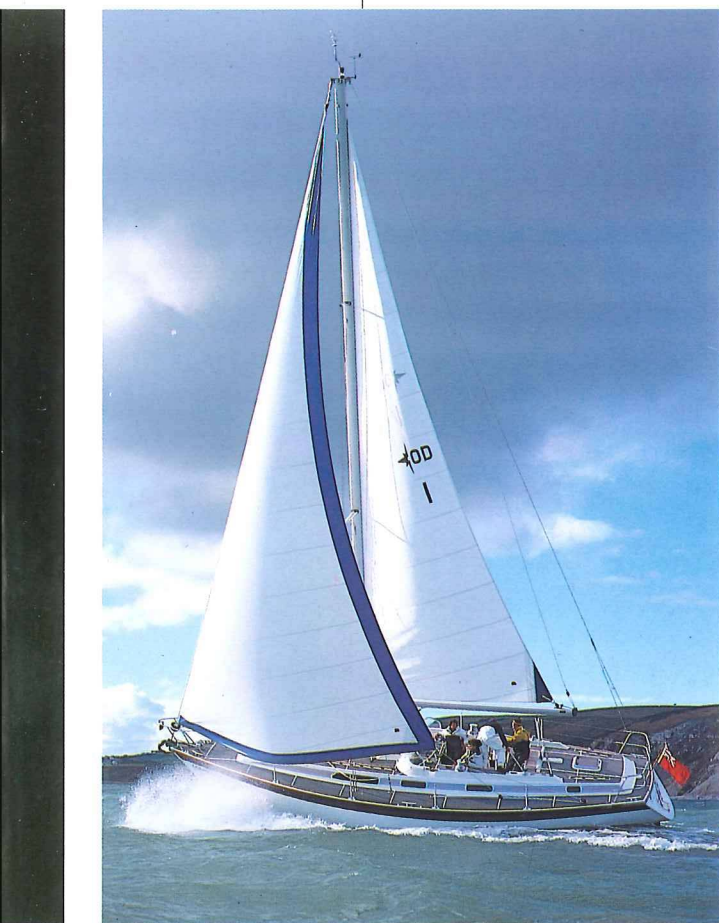
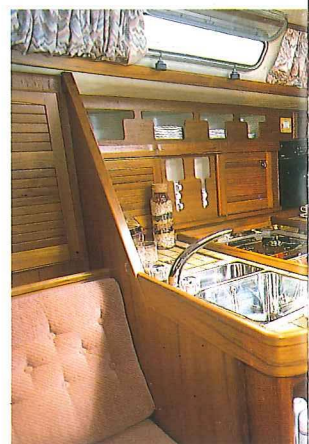
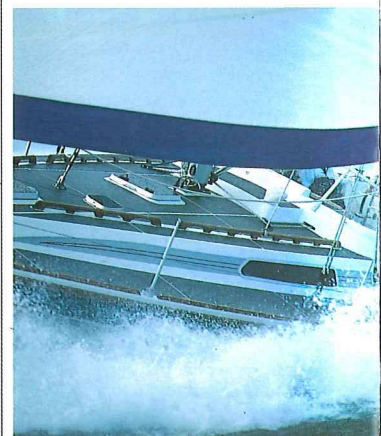
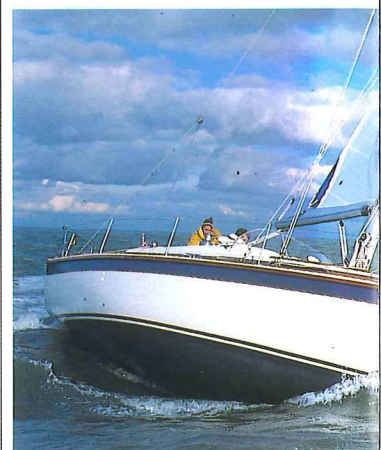
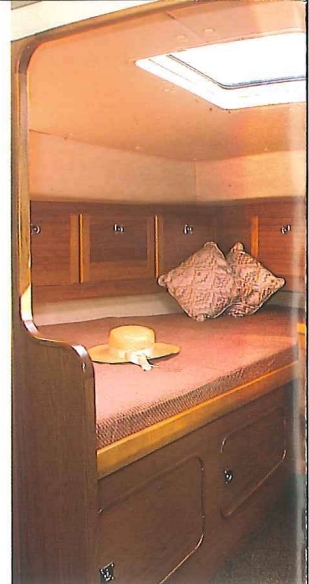
*There is a superb stereo radio cassette system fitted as standard in the saloon (there's another one in the owner's stateroom). From the options list you can specify a television built in to one of the lockers, with a video for when the local programmes lose something in the translation.*

*The large galley is conveniently situated just aft of the sitting area, and is comprehensively equipped. There's a cooker with oven and grill, two iceboxes – one of*

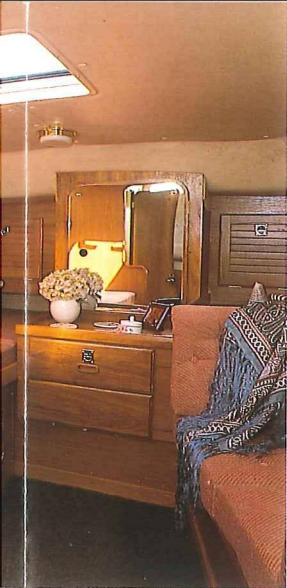
*them refrigerated – and a double sink with pressurised hot and cold water, as well as ample stowage space. It's also laid out to accommodate the optional microwave cooker should you wish.*

*Opposite the galley on the port side is the navigation station, with a full size chart table and a graphic electrical panel. We can fit a wide range of instruments, too.*

*From the saloon forwards is a heads compartment with shower and hot and cold running water. The forecabin can*



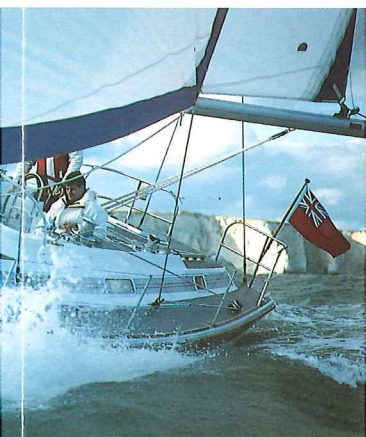
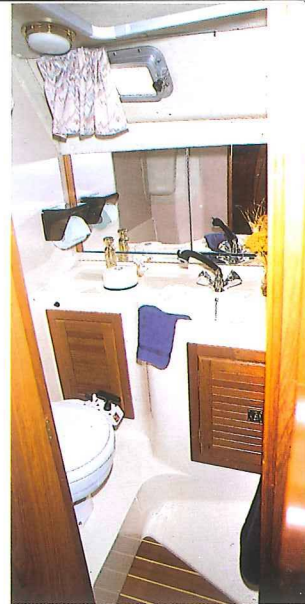




*be configured as two singles or a double using the infill provided, and has plenty of hanging space for clothes.*

*From the after end of the saloon runs a passageway to the owner's stateroom in the stern, including a navigator's berth which can be closed off completely.*

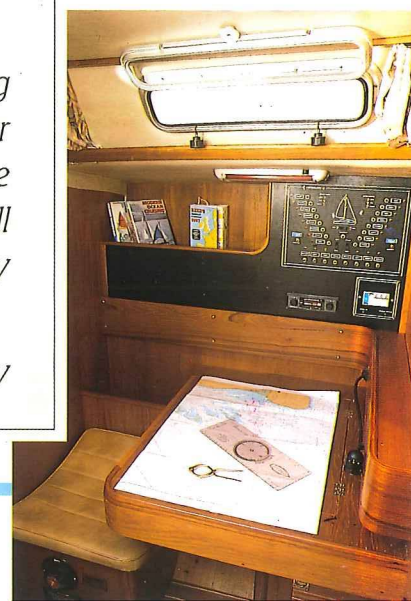
*The stateroom itself can only be described as vast. It has a separate ensuite heads, again with a shower and pressurised hot and cold water supply, a full size double bed and a sofa in matching designer fabric. There's a stereo, thick carpet on the floor, and enough locker space to hold*



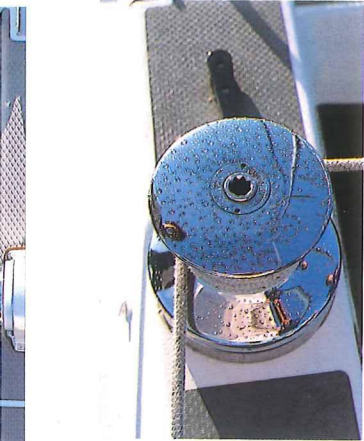
*everything you could need whether your destination is Cowes, Cannes or the Caribbean.*

*The Oceanlord was designed for comfortable living aboard. And with the options available, you can turn your own yacht into as luxurious a home as you want. It will be built with all the care, attention to detail and traditional skill yachtsmen have come to expect from Westerly seacraftsmanship.*

*Each yacht is built to the high standards demanded by*







*the Lloyd's Hull Construction Certificate. Lloyd's surveyors inspect every hull each week during construction, and if they're not satisfied it doesn't get a certificate. Without a certificate, it doesn't get sold.*

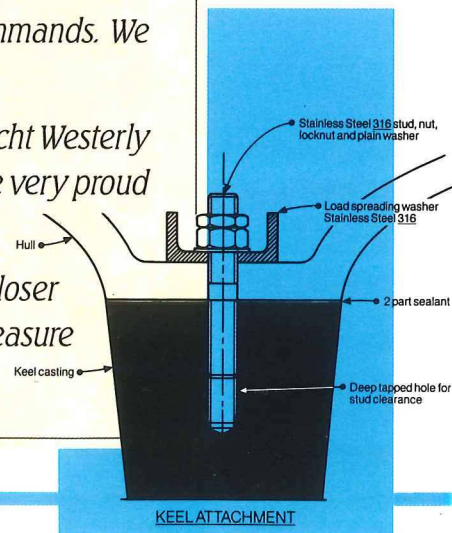
*Construction takes place under carefully controlled conditions of temperature and humidity using the very finest materials, including the most advanced resins, strong GRP reinforcements, solid brass skin fittings and timber hand selected by our own craftsmen. Every hull is protected against osmosis by a double layer of gelcoat, inside and out.*



*The care we take when we build your yacht is reflected in the high resale value a Westerly yacht commands. We even offer a full after sales advisory service.*

*The Oceanlord is the largest production yacht Westerly have ever built. As the flagship of our fleet, we're very proud of it. We think owners will be just as proud.*

*If you're looking for a luxury yacht, take a closer look at the Westerly Oceanlord 41. It's a measure of your achievement.*





# THE WESTERLY *Oceanlord 41*

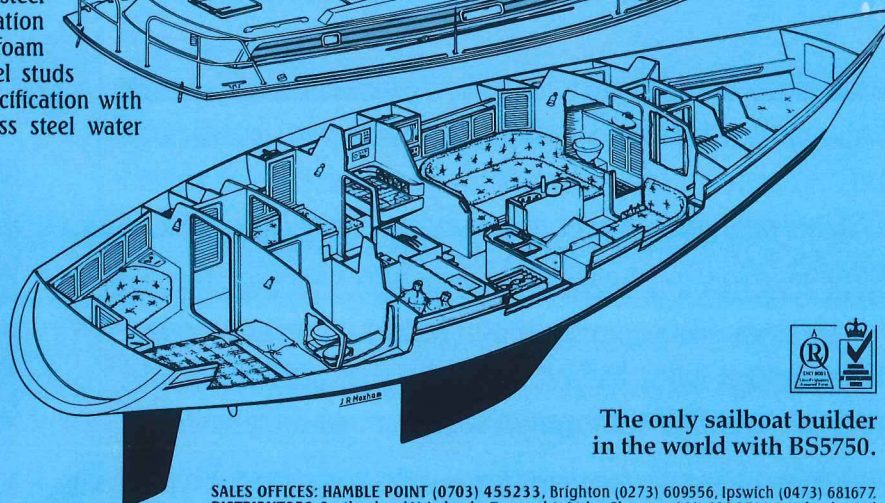
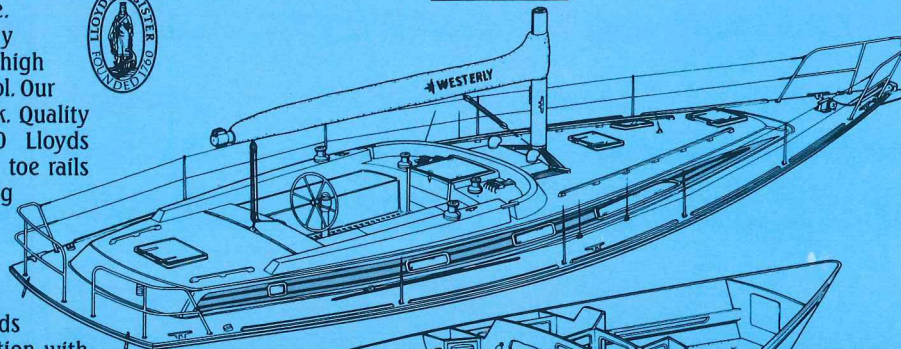
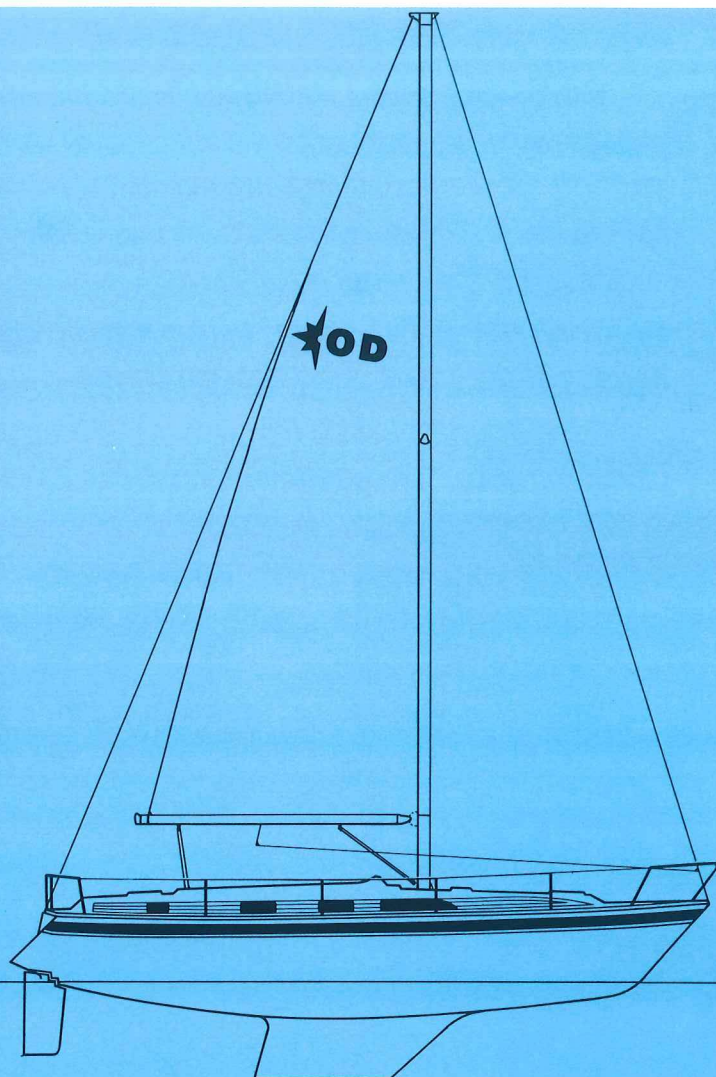
SAIL AREAS		
Mainsail	353ft <sup>2</sup>	32.79m <sup>2</sup>
No. 1 Genoa	617ft <sup>2</sup>	57.35m <sup>2</sup>
No. 2 Genoa	484ft <sup>2</sup>	44.96m <sup>2</sup>
No. 1 Jib	349ft <sup>2</sup>	32.42m <sup>2</sup>
No. 2 Jib	213ft <sup>2</sup>	19.78m <sup>2</sup>
Storm Jib	127ft <sup>2</sup>	11.79m <sup>2</sup>
Trysail	91ft <sup>2</sup>	8.49m <sup>2</sup>
Spinnaker	1483ft <sup>2</sup>	137.77m <sup>2</sup>
SPECIFICATIONS		
Length Overall	40' 6"	12.34m
Length Waterline	35' 3"	10.74m
Beam	13' 6"	4.11m
Draft	5' 6"	1.68m
Mast Height Above Waterline	55' 9"	16.98m
DESIGNED WEIGHTS		
Displacement	20878lb	9470kg
Ballast	8000lb	3629kg

Specifications and standard inventory are liable to change according to availability of bought in and manufactured supplies. Some items shown in the photographs are not included in the standard price.

## CONSTRUCTION STANDARDS

Lloyds Hull Construction Certificate. Double gelcoat to both external hull and internally to waterline. Temperature and humidity controlled laminating. Very high degree of lamination control. Our own carefully selected teak. Quality control system with 200 Lloyds approved items. Solid teak toe rails grab handles and rubbing strake for durability. 316 high grade stainless steel from our own fabrication factory. Fire resistant foam in all upholstery. Keel studs 50% over Lloyds specification with locking nuts. Stainless steel water tanks.

Lloyd's  
Register



The only sailboat builder  
in the world with BS5750.

# WESTERLY

Westerly Yachts Limited, 47 Aston Road,  
Waterlooville, Portsmouth, Hants PO7 7XJ.  
© A subsidiary of Westerly plc

SALES OFFICES: HAMBLE POINT (0703) 455233, Brighton (0273) 609556, Ipswich (0473) 681677.  
DISTRIBUTORS: Scotland and N. Ireland - Euroyachts Ltd. - Glasgow (041) 429 3766. S. Ireland - Neil  
Watson Ltd. - (0001) 806070. N. England and N. Wales - Dickies of Bangor - (0248) 352775. S. Wales -  
Dickies of Swansea - (0792) 645303. Channel Islands - New Horizon Yachts Agency - (0481) 26335.  
West Germany - (4562) 6247. Netherlands - (5149) 1566. Belgium - (3) 232 1210. France - (20)  
550070 - (99) 885601 - (40) 820464 - (94) 434594. Japan - (03) 210 4534. Italy - (185) 314021.  
Portugal - (1) 2844248. Gibraltar - (350) 40139.

THE WESTERLY RANGE - OCEAN CRUISING YACHTS - OCEANMASTER 48, OCEANLORD 41,  
OCEANRANGER 38, OCEANDREAM 35, PERFORMANCE YACHTS - TYPHOON 37, STORM 33,  
TEMPEST 31. FAST CRUISING YACHTS - STORM CRUISER 33, FULMAR 32, KONSORT 29, MERLIN 29.  
DECK SALOON YACHTS - RIVIERA 35.  
AFTER SALES SERVICE (0705) 256406.

100 Freefone Westerly Yachts. Demonstrations are available 7 days a week.