

W E S T E R L Y

S E A C R A F T S M A N S H I P



 **WESTERLY**
Oceanranger 38

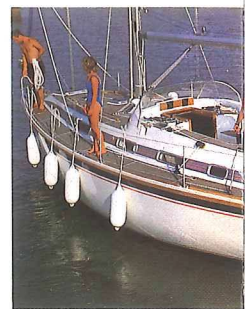
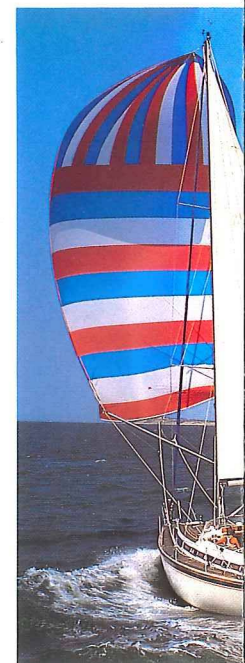
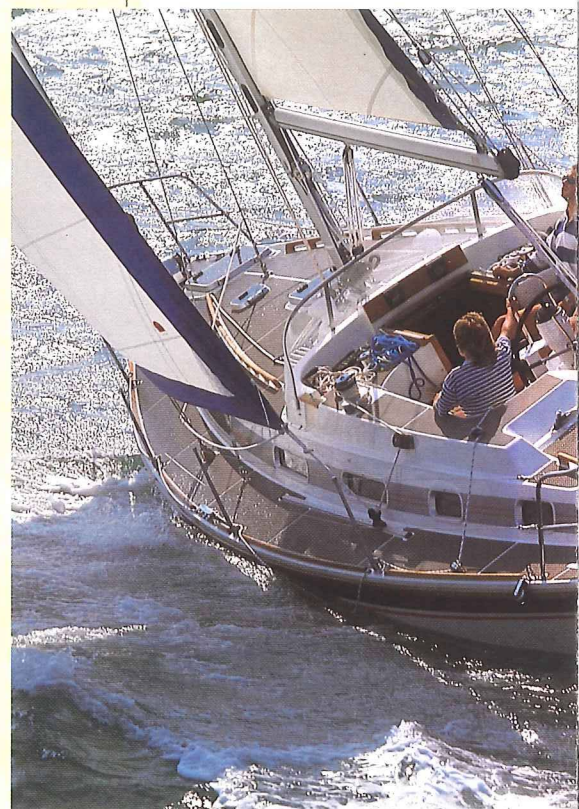
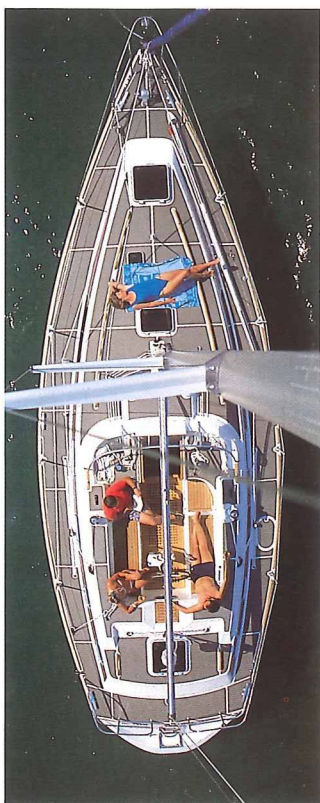
If you're serious about sailing, there's bound to come a time when you're ready to make the jump from a boat that's fine for weekends and the odd holiday, to a yacht capable of taking you on extended blue water cruises.

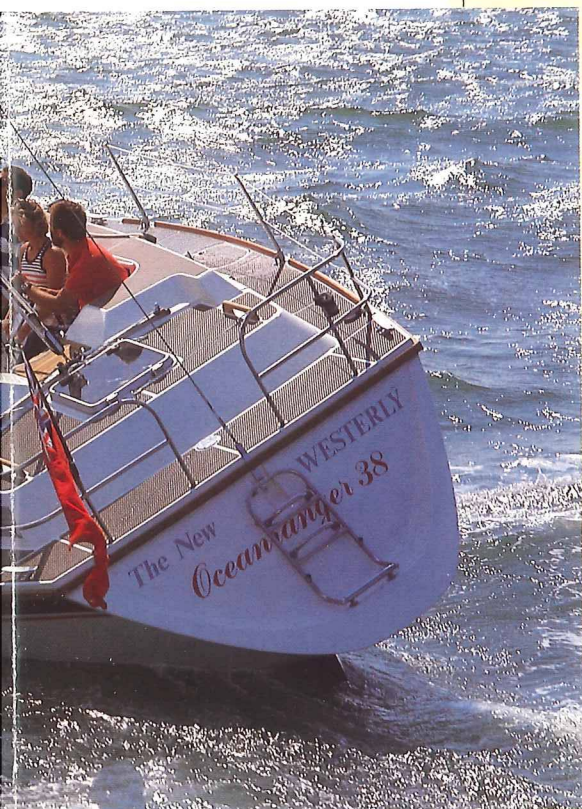
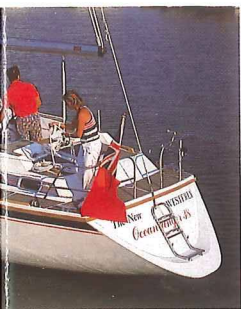
A yacht with a standard of construction that gives you the confidence to tackle long voyages. A yacht that provides the level of comfort and accommodation a growing family needs. And a yacht with powerful yet easily controlled performance.

The Oceanranger 38 from Westerly, for example.

With lines drawn by Ed Dubois, Britain's leading monohull designer, the Oceanranger's long hull looks sleek and purposeful in harbour or under way.

A computer-optimised underwater shape gives a high degree of stability on all points of sailing — a very desirable attribute whether you're bashing through a Channel chop or riding the surf downwind in the Southern Ocean.





On deck, too, the design is clearly meant for comfort under all conditions, with a deep centre cockpit protected by a generous coaming, and a stern bathing platform for sunnier days.

All of the major controls are led back to the cockpit-mounted 2-speed winches, and the mainsheet is in easy reach behind the wheel steering position.

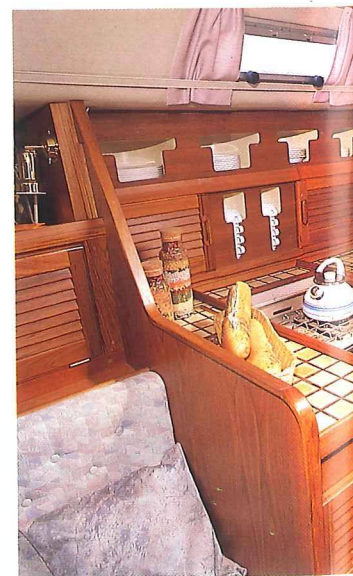
Below, the layout provides a carefully thought out living space for a family afloat. There's a roomy double cabin aft, with a sofa, ensuite



heads, plenty of dry hanging space and generous headroom.

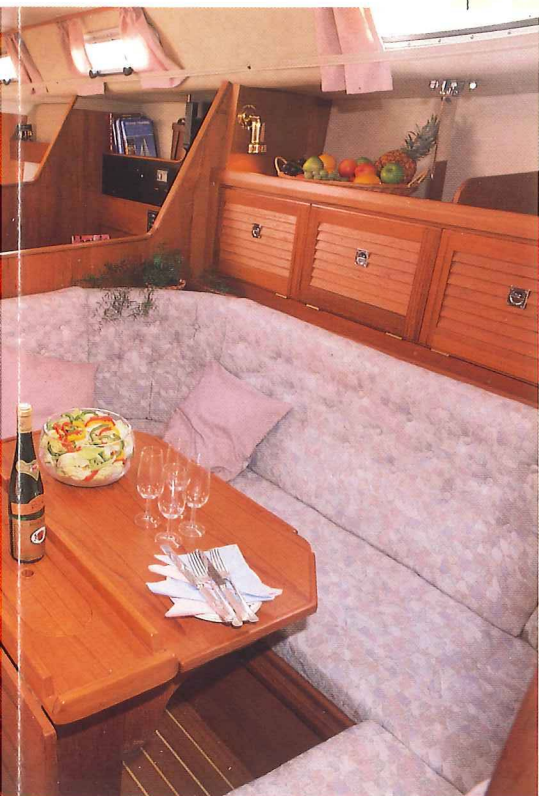
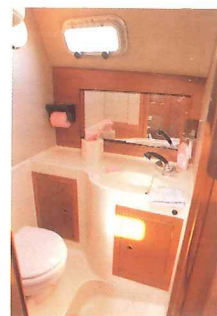
In the companionway forward, there's a navigator's berth just aft of the respectably sized navigation station. There's a chart table big enough for a half Admiralty chart, and ample instrument space.

Opposite, on the starboard side, is the fully equipped galley with ice-box, cooker, double sink and easily





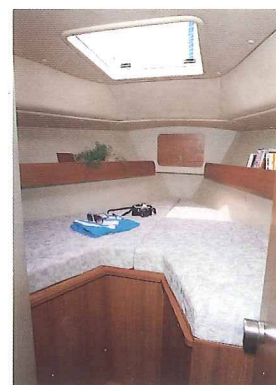
accessible locker space. The U-shaped work surfaces allow the cook to work easily and safely even when there's a sea running.



Moving forward, we come to the saloon area. Here, there's enough space on the luxury fabric-covered seating for the full crew, and chance visitors too, around the fold-out table.

Forward of the saloon is another heads, more hanging space and a V-shaped double berth in the forecabin.

The Oceanranger is, as you'd expect, built and finished to Westerly's usual high standards. All the timber is selected and hand fitted by our own craftsmen. High grade stainless steel



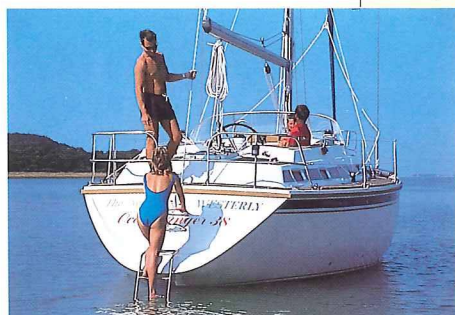


is used for all fittings. And each yacht is delivered complete with a Lloyd's of London Hull Construction Certificate.

That means you can be confident

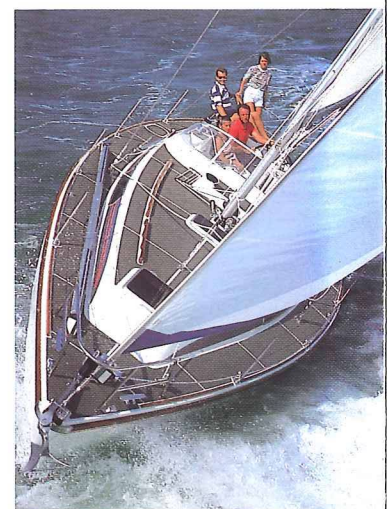


that your Westerly Oceanranger will not only look after you for years to come, but will also look after your investment.



Confidence in your yacht is the first step to becoming a blue water yachtsman or woman. And with Westerly seacraftsmanship, that's what the Oceanranger can provide.

The second step, of course, is booking a test sail.



THE WESTERLY

Oceanranger 38

SAIL AREAS		
Sloop Rig		
Mainsail	296ft ²	27.23m ²
No. 1 Genoa	540ft ²	49.68m ²
No. 2 Genoa	445ft ²	40.90m ²
No. 1 Jib	328ft ²	30.18m ²
No. 2 Jib	228ft ²	20.97m ²
Storm Jib	115ft ²	10.58m ²
Trysail	103ft ²	9.47m ²
Radial Head Glider	936ft ²	86.11m ²
Radial Head Spinnaker	1296ft ²	119.23m ²
SPECIFICATIONS		
Length Overall	38' 0"	11.58m
Length Waterline	30' 9"	9.37m
Beam	12' 8"	3.86m
Draught	5' 0"	1.52m
Mast Height Above Waterline	52' 0"	15.85m
DESIGNED WEIGHTS		
Displacement	15900 lb	7212 kg
Ballast	6600 lb	2996 kg

Specifications and standard inventory are liable to change according to availability of bought in and manufactured supplies. Some items shown in the photographs are not included in the standard price.

CONSTRUCTION STANDARDS



Lloyds Hull Construction Certificate. Double gelcoat to both external hull and internally to waterline. Temperature and humidity controlled laminating. Very high degree of lamination control. Our own carefully selected teak. Quality control system with 200 Lloyds approved items. Solid teak toe rails grab handles and rubbing strake for durability. 316 high grade stainless steel from our own fabrication factory.

Fire resistant foam in all upholstery.

Keel studs above Lloyd's specification with locking nuts. Stainless steel water tanks.



WESTERLY

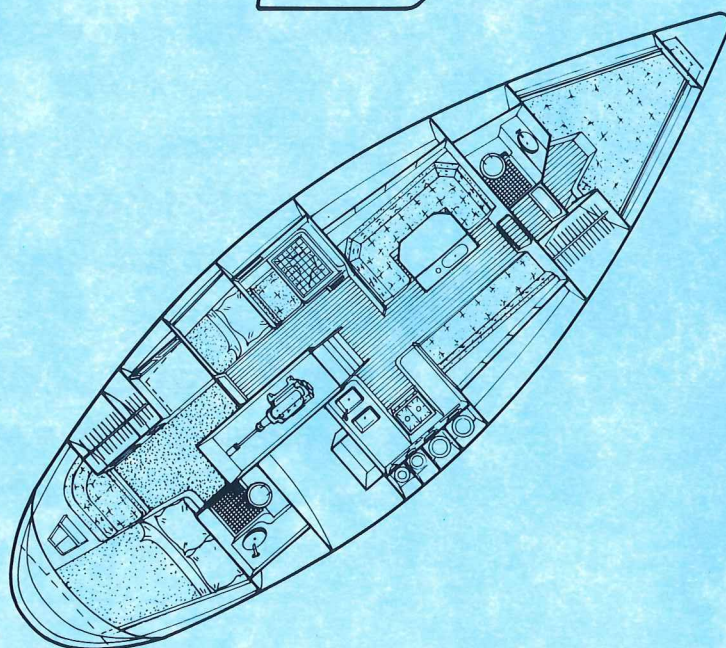
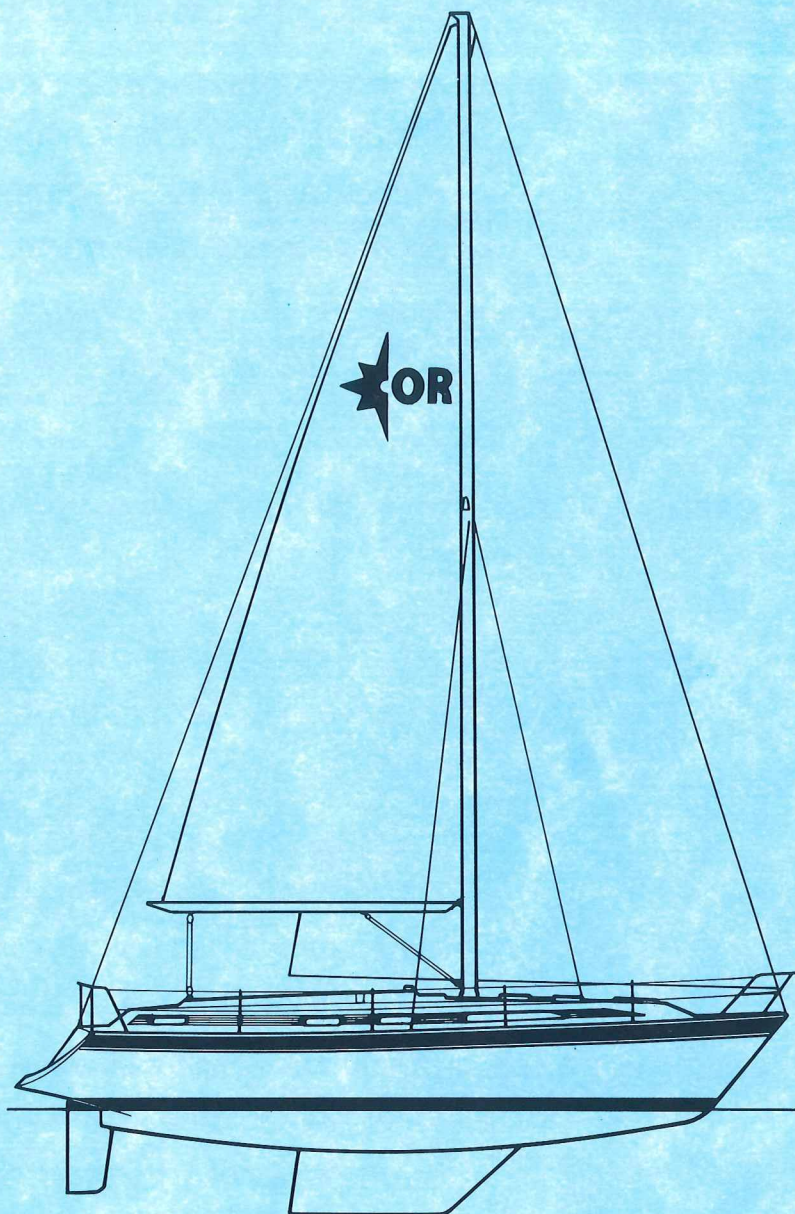
Westerly Yachts Limited, 47 Aston Road,
Waterloo, Portsmouth, Hants PO7 7XJ.

© A subsidiary of Westerly plc

THE WESTERLY RANGE – OCEAN CRUISING YACHTS – OCEANMASTER 48, OCEANLORD 41, OCEANRANGER 38. PERFORMANCE YACHTS – STORM 33, TEMPEST 31. FAST CRUISING YACHTS – SEAHAWK 35, FALCON 35, STORM CRUISER 33, FULMAR 32, KONSORT 29, MERLIN 28. DECK SALOON YACHTS – RIVIERA 35.

SALES OFFICES: HAMBLE POINT (0703) 455233, Brighton (0273) 609556, Ipswich (0473) 681677, Plymouth (0752) 672828. DISTRIBUTORS: Scotland and N. Ireland – Euroyachts Ltd. – Glasgow (041) 429 3766. S. Ireland – Neil Watson Ltd. – (0001) 806070. N. England and N. Wales – Dickies of Bangor – (0248) 352775. S. Wales – Dickies of Swansea – (0792) 645303. Channel Islands – New Horizon Yachts Agency – (0481) 26335. West Germany – (04562) 6247. Netherlands – (5149) 1566. Belgium – (3) 232 1210. France – (22) 268206 – (40) 820464 – (94) 434594. Gibraltar – Gib. 76710. Japan – (03) 210 4455. Finland – (0) 1351050. Portugal – (1) 2844248.

AFTER SALES SERVICE (0705) 256406.



100 Freefone Westerly Yachts. Demonstrations are available 7 days a week.