

SEARCHING FOR THE WESTERLY



 **WESTERLY** Fulmar 32

FAST AND MANAGEABLE

The Westerly Fulmar is a fast yet highly manageable 32' sloop whose blend of elegant looks and superb sailing qualities is scarcely even approached by other yachts in the same class. She provides enjoyable cruising in comfort for all the family as well as a level of performance that's right at home in racing company – an unusual combination, to say the least, and one in which the masterly hand of designer Ed Dubois can easily be discerned.

The Fulmar's well proportioned hull and balanced sail plan, with $\frac{3}{4}$ rig keep headsails and spinnakers to a manageable size and ensure stability in any weather. This in turn opens up the intriguing possibility of long-distance, deep-water cruising which every yachtsman sooner or later wants to undertake.

Short-handed sailing Despite her size, the Fulmar can be handled with ease. All the halyards, spinnaker pole controls and reefing lines are led aft to tough, 2-speed winches, and stoppers located abeam the main hatch; 2-speed genoa sheet winches are mounted aft of the main hatch, which is recessed into the forward cockpit bulkhead.

Furthermore, the cockpit forward end is specially rounded, giving welcome shelter, and a safe, protected working area from which the helmsman can see clearly ahead and keep complete all round control. The deck area is clear, uncluttered and extremely safe to work on, while every item of deck hardware is substantial and secure. Wheel steering is available as an option.

The interior is spacious and well planned, making ingenious use of all the available space. Four fixed portlights and the tinted perspex saloon hatch allow plenty of light to come in, adding to the attractive and quietly elegant atmosphere finished throughout in teak.



Spacious 6-7 adults can be accommodated on the Fulmar. There is an enormous single berth in the port quarter, aft of the navigation area. The forward cabin has two full-length berths with lockers below and shelves above. Immediately aft are two hanging lockers and the marine WC with shower and tray and basin.

The saloon features two berths, full length, of which one can convert to a double. With the table's hinged leaves raised, there's plenty of room for as many as 8 people to sit together.

Galley The galley is aft to starboard, with the navigation area to port. Ample working surfaces, plenty of room, and the standard equipment makes meal preparation surprisingly easy. The gimbaled cooker has two burners with oven and a grill, with gas supply bottle in its own vented compartment in the





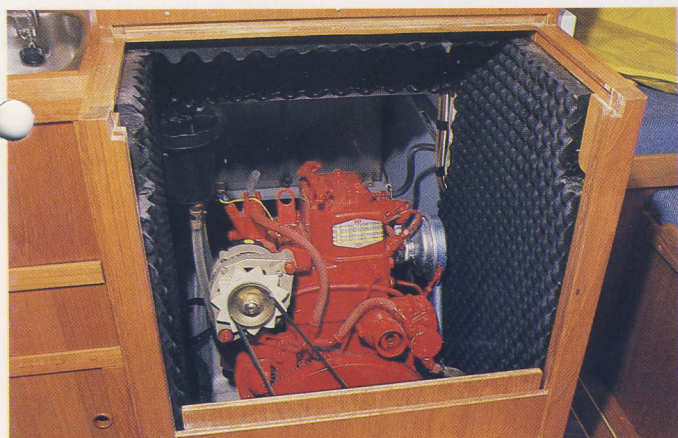
cockpit. Under the worktop is the well insulated icebox.

Navigation The navigation area is also eminently workable, with a table that easily takes a half folded Admiralty chart. There is ample chart stowage with drawers below and a flexible chart light is fitted as standard.

Quality The Fulmar's outstanding quality begins with her sturdy glassfibre hull, endorsed by the Lloyd's Hull Construction Certificate, and extends to every single fitting on board.

Regular inspections to maintain that quality are made throughout the construction process, especially at the moulding and curing stages.

This fast, exciting sloop, available in fin and twin keel versions, offers a major extension to your cruising and racing potential.



Engine Power for the Fulmar comes from the very reliable and smooth running 18hp 2-cylinder diesel engine, which gives a hull speed in excess of 6 knots plus power to spare. The 20-gallon fuel tank gives a cruising range of over 200 miles.



WESTERLY ROYAL LYMINGTON CUP MAY 1985

In 1985, for the first time, Westerly provided boats for the major Royal Lympington Cup match racing series.

This event was sailed in 10 Limited Edition Westerly Fulmars, purpose built for the series and helmed by the world's top international 12m skippers as a training ground for the America's Cup. They showed just what the standard Fulmar with racing sails could really achieve – a true test of Westerly's seacraftsmanship.



THE WESTERLY FULMAR 32

SAIL AREAS

Mainsail	253sq. ft.	23.5sq.m.
No.1 Genoa	313sq. ft.	29.1sq.m.
No.2 Genoa	254sq. ft.	23.6sq.m.
No.1 Jib	194sq. ft.	18.0sq.m.
No.2 Jib	93sq. ft.	8.6sq.m.
Spinnaker	760sq. ft.	70.61sq.m.

SPECIFICATION

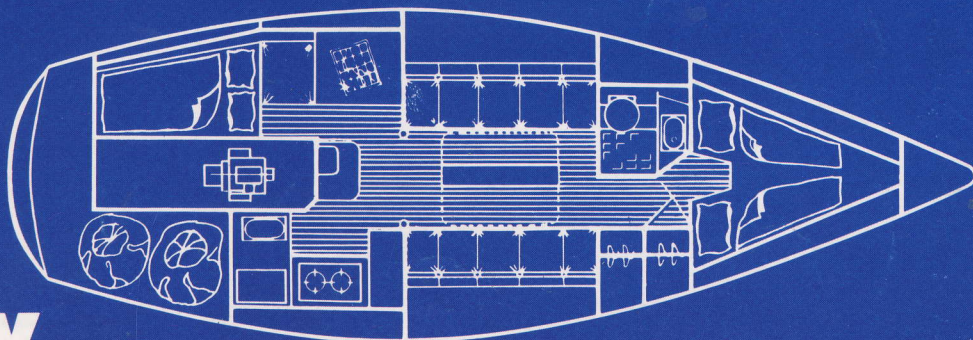
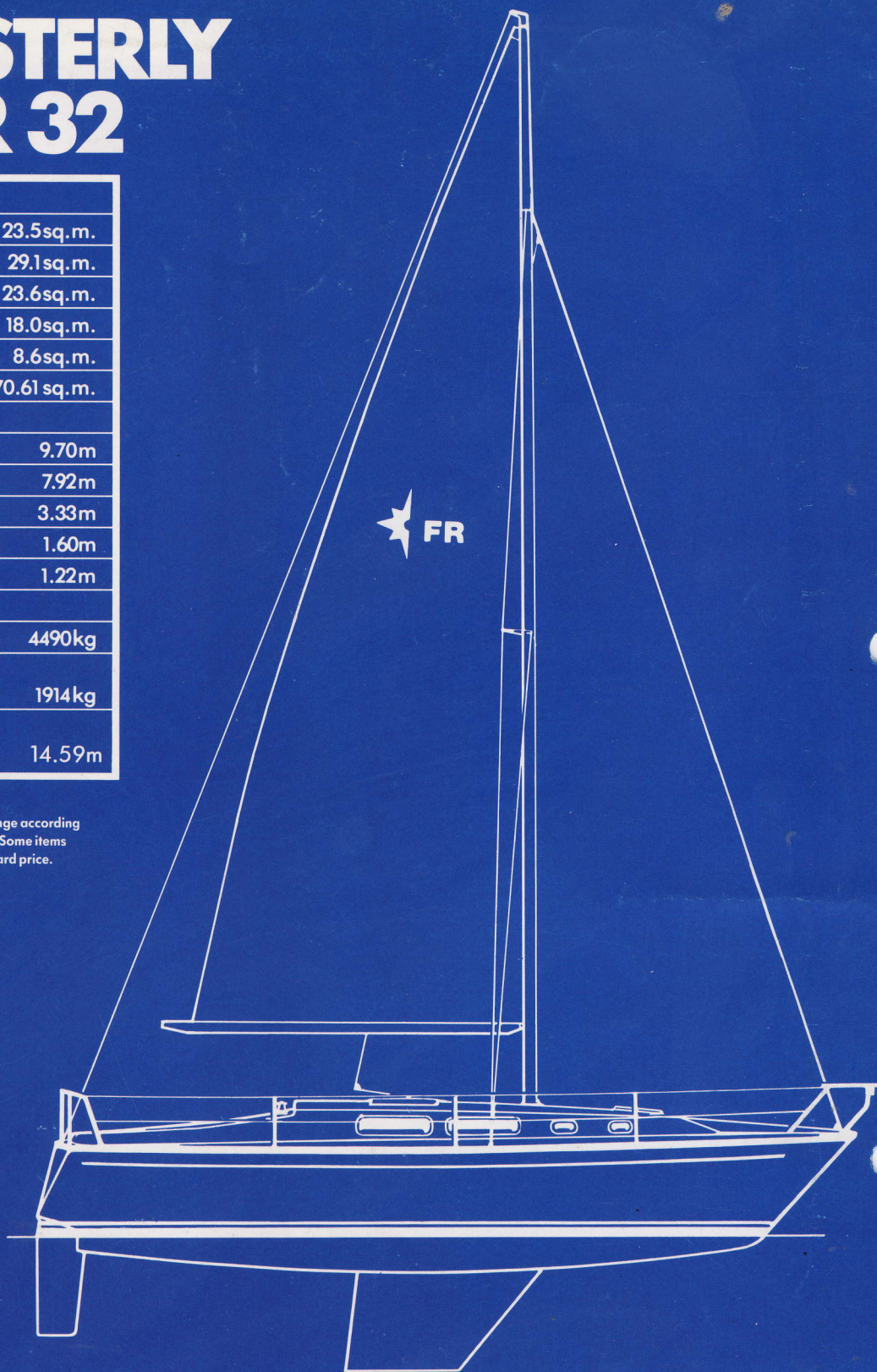
Length overall	31' 10"	9.70m
Length waterline	26' 0"	7.92m
Beam	10' 11"	3.33m
Draft – Fin Keel	5' 3"	1.60m
Draft – Twin Keels	4' 0"	1.22m

DESIGNED WEIGHTS

Displacement	9900lb	4490kg
Ballast – Fin & Twin Keels	4210lb	1914kg
Mast height above waterline	47' 10"	14.59m

LLOYDS HULL CONSTRUCTION CERTIFICATE

Specifications and standard inventory are liable to change according to availability of bought in and manufactured supplies. Some items shown in the photographs are not included in the standard price.



WESTERLY

THE WESTERLY RANGE: PERFORMANCE CRUISERS – STORM 33, TEMPEST 31. FAST CRUISERS – OCEANLORD 41, CORSAIR II 36, SEAHAWK 35, FALCON 35, FULMAR 32, KONSORT 29. DECK SALOON CRUISERS – RIVIERA 35, KONSORT DUO 29.

100 FREEPHONE WESTERLY YACHTS. DEMONSTRATIONS ARE AVAILABLE 7 DAYS A WEEK. AFTER SALES SERVICE (0705) 256406.
Westerly Yachts Limited, 47 Aston Road, Waterlooville, Portsmouth, Hants PO7 7XJ. © (a subsidiary of Centreway Industries plc)

SALES OFFICES: HAMBLE POINT (0703) 455233, Brighton (0273) 609556, Swansea (0792) 473330, Poole (0202) 700210, Ipswich (0473) 681677, Plymouth (0752) 672828.
DISTRIBUTORS: Scotland and N. Ireland – Euroyachts Limited – Glasgow (041) 429 3766. S. Ireland – Neil Watson Ltd. – (0001) 806070. N. England and N. Wales – Dickies of Bangor – (0248) 352775. Channel Islands – New Horizon Yachts Agency – (0481) 26335. W. Germany – (040) 7 42 80 81. Netherlands – (5149) 1566. Belgium – (3) 232 1210. N. France – (96) 410879. S. France – (94) 434594. Gibraltar – Gib. 76710. Japan – (03) 210 4455.