

WESTERLY

*Miswa te water 'j*

SEACRAFTSMANSHIP



**WESTERLY**  
Enhancing the tradition



**Skipshandel Stavoren**

**Marina Stavoren**

Middelweg 15  
8715 ET Stavoren

Tel.: 05149-2085  
Fax: 05149-1509



*In the Kestrel 35, Westerly and naval architect, Ed Dubois, have achieved a combination of real performance with superb comfort and style for you to enjoy with your family and friends.*

*Her hull, designed using the latest computer technology, makes her powerful and easily handled by two people. Precise wheel steering gives superb control to both windward and downwind in all conditions. Manoeuvrability under engine is remarkable - the 28hp Volvo diesel giving plenty of power in rough conditions and plenty of stopping power to ensure safe berthing alongside the pontoon.*

*The aft cockpit, which will seat six people, is deep and safe with substantial coamings. Halyards and reefing lines are all led aft and good sized winches make short handed sailing safe and comfortable. The huge sail locker will swallow up all of your cruising paraphernalia with ease.*

*Side decks are wide and uncluttered with plenty of teak handrails within easy reach. Her elegant "sugar scoop" stern enables easy boarding after a swim or from the tender.*

*Descending below, you are immediately aware of the space and airiness of the main saloon. Hand crafted teak woodwork is in abundance, giving a relaxing sumptuous living space. The huge table, which features central bottle stowage, will seat six people with room to spare. The seating converts to a single and a double berth if required.*

*The superbly appointed aft owner's cabin features an enormous double berth and en suite heads and shower compartment for complete privacy. Plenty of hanging space is provided with more lockers for odds and ends. Full standing headroom completes the picture.*

*The fore cabin is light and airy with twin 'V' berths that will convert to a double. A large hatch provides ventilation and easy access to the deck. Like the aft heads, the forward heads feature a shower with a hot and cold pressurised water supply with smooth easily cleaned surface for hygiene - so important in a cruising boat.*



*The beautifully appointed galley features a double sink, insulated cool box and gimballed cooker with grill and oven. The extensive work surface comes in a choice of colours, and deep fiddles ensure security for the cook at sea.*

*The separate navigator's area has ample space for instrument repeaters, Decca, VHF radio and any other electronic navigational aid you will ever need. The chart table accepts a folded Admiralty chart and adjacent to this is plenty of space for the almanac and other books.*

*The solid hand built quality finish doesn't stop at the surface. All lockers are fully lined - even the cockpit locker is finished inside with 2 coats of paint.*

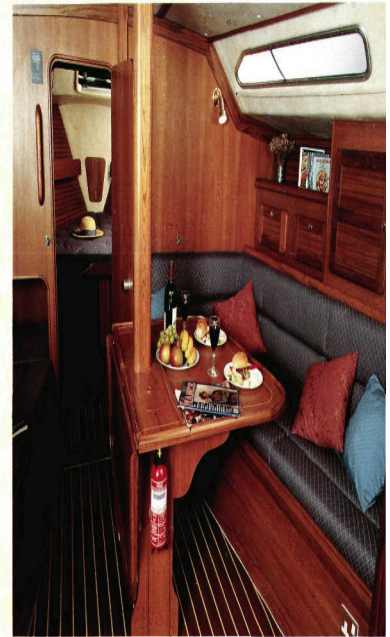
*All Westerlys are individually built to the owner's requirements and a full Lloyds Hull Construction Certificate comes as standard. The stainless steel keel bolts, so crucial in a serious cruising boat, actually exceed those exacting standards.*

*Construction takes place under carefully controlled conditions where temperature and humidity is monitored 24 hours a day. The finest materials are used including the most advanced resins, massive GRP reinforcement, solid brass fittings and timber selected by our own craftsmen. Every hull has a double layer of gelcoat inside and out.*



*All aspects of Westerly Yacht Construction are covered by BS 5750 (ISO 9001), and approved by Lloyd's Register Quality Assurance.*

*The Kestrel 35 is built to last, and to give you and your family years of safe and exciting trouble-free sailing.*





# Kestrel 35

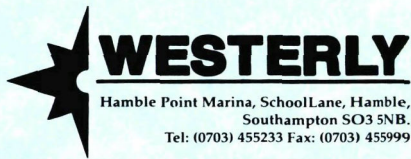
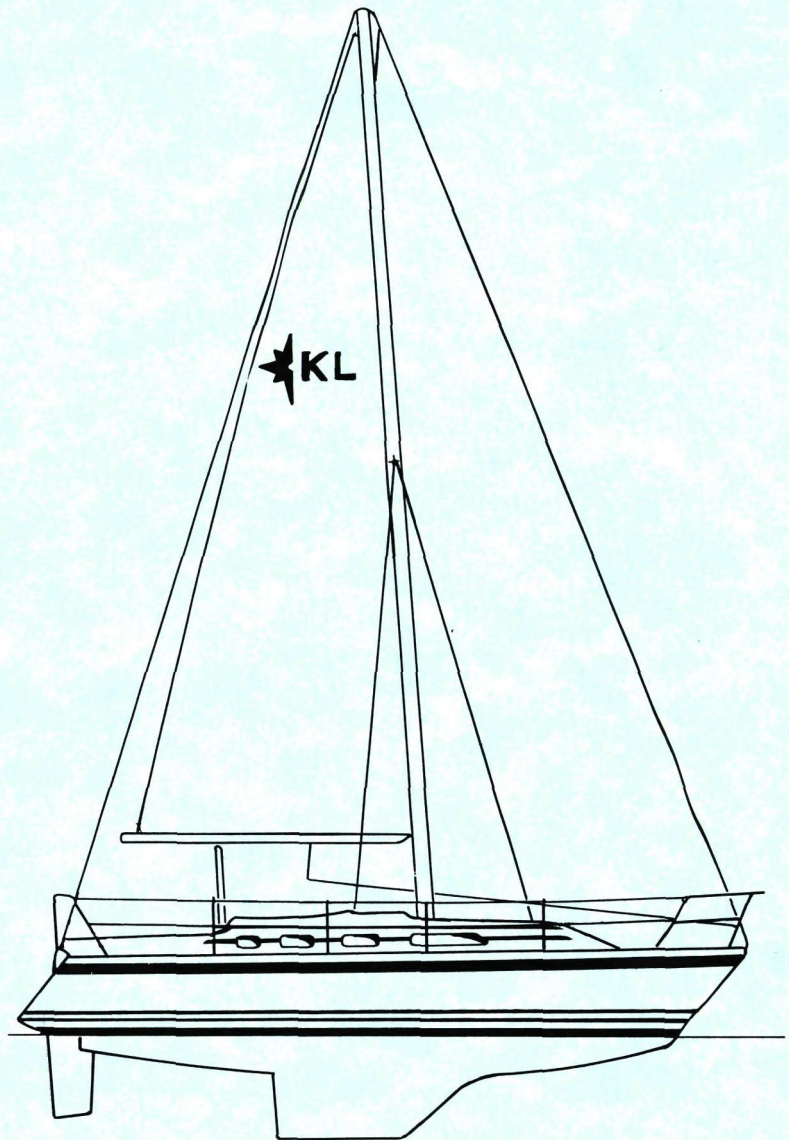
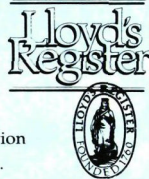
SPECIFICATIONS		
Length overall	34' 7"	10.5m
Length waterline	27' 0"	8.2m
Beam	12' 3"	3.7m
Draft	6' 0"	1.8m
Mast Height above Waterline	48' 5"	14.8m
DESIGNED WEIGHTS		
Displacement	14080 lbs	6400kg
Ballast	5698 lbs	2590kg
SAIL AREAS		
Mainsail	240ft <sup>2</sup>	22.3m <sup>2</sup>
No. 1 Genoa	485ft <sup>2</sup>	45.1m <sup>2</sup>
No. 2 Genoa	398ft <sup>2</sup>	37.0m <sup>2</sup>
No. 1 jib	288ft <sup>2</sup>	26.8m <sup>2</sup>
No. 2 jib	204ft <sup>2</sup>	19.0m <sup>2</sup>
Storm jib	82ft <sup>2</sup>	7.6m <sup>2</sup>
Spinnaker	1135ft <sup>2</sup>	105.4m <sup>2</sup>

Specifications and standard inventory are liable to change according to availability of bought in and manufactured supplies. Some items shown in the photographs are not included in the standard price.

#### CONSTRUCTION STANDARDS

Lloyd's Hull Construction Certificate.  
Double gelcoat to both external hull and internally to waterline.

Temperature and humidity controlled laminating. Very high degree of lamination control. Our own carefully selected teak. Quality control system with 200 Lloyd's approved items. Solid teak toe rails, grab handles and rubbing strake for durability. 316 high grade stainless steel from our own fabrication factory. Fire resistant foam in all upholstery. Keel studs above Lloyd's specification with locking nuts. Stainless steel water tanks.



#### SALES OFFICES

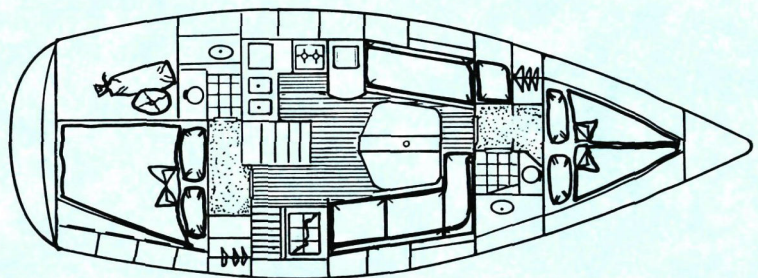
HAMBLE POINT Tel: (0703) 455233 Fax: (0703) 455999

#### U.K. DISTRIBUTORS

SCOTLAND - Euroyachts Ltd. - Glasgow (041) 429 3766  
EAST COAST - Fox's Yacht Sales - Ipswich (0473) 604200  
WEST COUNTRY - Armada Yacht Services (0752) 672828  
N. ENGLAND & WALES - Dickies of Bangor (0248) 352775  
S. WALES - Dickies of Swansea (0792) 645303  
CHANNEL ISLANDS -  
New Horizon Yacht Agency (0481) 726335

#### OVERSEAS DISTRIBUTORS

For a full list of local details please write of telephone:  
(+44) 703 455233



The only sailboat builder in the world with BS5750 (ISO 9001) for design, development and construction.

**Demonstrations and test sails available 7 days a week**





Answer to water 'g's

December 1992

# WESTERLY

## KESTREL 35

### STANDARD SPECIFICATION

**HULL** White GRP. Fin keel. Retrouse stern and bathing platform. Antifouling. Teak rubbing strake. Bronze seacocks and underwater skin fittings. Cathodic protection. Self draining cockpit. Blue moulded trim line.

Hand laid in temperature and humidity controlled environment. using Lloyds Register approved resins and reinforcements.

**RUDDER** GRP with stainless steel 316 stock and framework.

**KEEL** Cast iron with stainless steel studs and twin locking nuts.

**DECK/COCKPIT** Teak cockpit seats. Grey non-slip deck paint. Hatches in forecabin and saloon. Wheel steering. Compass. Drained gas locker stowage for 2 x 6lb (2.7kg) Gaz bottles (one supplied). Echosounder, speed/log in snood.

**DECK FITTINGS** Stainless steel pushpit and pulpit. Twin bow rollers. 24" stanchions with twin stainless steel lifelines. 2 x self tailing foresheet winches, 2 halyard winches (one self tailing) 2 x winch handles. Genoa tracks and cars with control lines. Spinnaker deck gear (excluding winches and pole) 2 foredeck, 2 stern and 2 spring cleats. Stainless steel stay and shroud plates. Teak coachroof handrails. Ensign socket. Boarding ladder and steps.

**SAILS AND RIGGING** Fully battened mainsail with lazyjacks and mainsail cover. Roller furling genoa. Silver anodised mast and boom. Main and jib halyards led aft. Reefing pennants led aft. Topping lift. Signal halyards. Polyester running rigging. Stainless steel standing rigging.

**ELECTRICAL SYSTEM** Navigation and steaming lights. 2 x 95 a/h batteries. 50a/h alternator. Circuit breaker system.

**ENGINE** Volvo 2003 (28hp) in sound deadened engine compartment. Flexible mountings. 2-bladed propeller. Water cooled exhaust. Control panel in cockpit.

**TANKS** 35 gallon fuel tank. 60 gallon water tank (stainless steel).

**INTERIOR** All woodwork in teak or teak faced and ply. Upholstery available in a choice of fabrics.

**FORECABIN** 2 berths with infill. Hanging locker.

**HEADS** Moulded washbasin. Shower with curtain rail. Hot and cold water supply. Marine WC. Soap holder toilet roll holder and towel rail. Deck hatch.

**SALOON** Single berths port and starboard. Centreline table with drop leaves and bottle stowage. Teak and holly cabin sole. Two opening ports.

**NAVIGATION AREA** Chart table with seat and chart stowage. Instrument console and book shelf.

**GALLEY** Work top and twin stainless steel sinks with hot and cold pressurised supply plus foot pump back up. Cooker with 2 burners, oven and grill in gimballs. Ample stowage. Refrigerated ice box. Rubbish bin.

**AFT CABIN** Double berth. Hanging space with vanitory top. Window to cockpit. Opening window to bridge deck. Carpeted sole. En-suite heads compartment with hot & cold water to moulded hand basin & shower. Marine WC. Opening window to bridge deck.

**GENERAL EQUIPMENT** Manual bilge pump. 35lb plough anchor. 15 fathoms 5/16" chain. 4 x fenders. 2 x 40' mooring warps.

LLOYDS HULL CONSTRUCTION CERTIFICATE

**QUALITY ASSURANCE** Westerly are the first Yacht Builder in the world to be awarded the prestigious BS5750 (ISO9001) Award for Construction and Design

WESTERLY YACHT CONSTRUCTION LTD. Hamble Point Marina, School Lane, Hamble, Southampton, S03 5NB  
Tel No: 0703 455233 Fax No: 0703 455999 For Distributors See Price List

*As your new KESTREL will be built especially to your individual order, we can offer you a choice of optional factory fitted items from the following comprehensive list*

<b>DECK FITTINGS</b>				<b>SAILS &amp; RIGGING</b>		
CKL22	Lifelines - PVC covered in lieu of standard	33		CKL13	Storm jib	284
CKL25	Dodgers - BLUE	181		CKL14	Cruising chute	768
CKL27	Name on dodgers.....	53		CKL15	Spinnaker gear	260
	.....			CKL16	Spinnaker radial head	1,086
CKL29	Extra anchor chain - 5 fathoms	46		CKL17	Spinnaker pole with mast stowage	474
CKL210	Extra anchor chain - 10 fathoms	92		CKL113	Wire rope halyards - Main jib	140
CKL211	Extra anchor chain - 15 fathoms	139		CKL114	Signal halyards x 2	35
CKL213	Cockpit cushions (state colour)	255		CKL118	Tri-colour and white masthead light	161
CKL216	12V socket in cockpit	54		CKL122	Cruising chute gear	274
CKL223	Anchor winch - Manual	562		CKL123	Radar reflector on mast	207
CKL224	Anchor winch - Electric + foot switch	1,031		CKL124	Nylon shroud rollers	60
CKL225	Outboard stowage on stern rail	66		CKL125	Rigging screw covers	78
CKL229	Split bow rail	166		CKL129	Insulated backstay via 2 insulators	189
CKL231	Teak cockpit grating	585		CKL131	Spinnaker pole & deck stowage	335
CKL241	Leather covered steering wheel	124				
CKL270	Folding sprayhood - Blue	613			<b>NAVIGATIONAL EQUIPMENT</b>	
CKL267	Treadmaster decks - Beige	2,339		CKL58	VHF radio with aerial	590
CKL273	Jackstay lifelines on side decks	130		CKL538	Combined VHF aerial + wind indicator at masthead incl. co-ax to chart table, deck plugs and 12V supply	215
CKL277	Additional 6lb Gaz bottle	83			Autopilot - direct to quadrant	2,552
CKL282	Anchor winch - Electric with foot and remote switches	1,242		CKL539	Autopilot for wheel	995
CKL252	Winch for headsail reefing	115		CKL554	Windspeed/direction main	396
CKL221	Winch handle pockets x 2	75		CKL555	Multifunction repeater	338
	<b>CABIN FITTINGS</b>			CKL556	Windspeed/direction repeater	338
CKL31	Additional 4-way switch panel	124				
CKL32	Additional dry powder fire exting.	44			<b>ENGINE</b>	
CKL34	240V/20a/h shore supply with ring main with 3 outlets	665		CKL42	Engine hour meter	106
CKL35	240V marine battery charger(+ CKL34)	405		CKL43	Engine spares kit	171
CKL36	110V/20a/h shore supply + ring main with 3 outlets	665		CKL44	Fuel filter/water separator	90
CKL37	110V marine battery charger(+CKL36)	358		CKL45	Stripper propeller protector 2 bladed	485
CKL38	240V immersion heater (with CKL34)	126			<b>GENERAL</b>	
CKL310	Additional 8 way switch panel	200		CKL615	Twin keels	1,050
CKL311	Seawater pump to galley	131		CKL74	Cradle	1,105
CKL313	Holding tank in forward head	373		CKL76	Delivery Gosport incl launch + comm.	1,105
CKL318	Additional 3rd battery	356		CKL77	Export documentation	90
CKL319	12V/240V transhave in heads	121		CKL711	French homologation	POA
CKL324	Additional bilge pump -Electric	190		CKL717	German specification	POA
CKL323	Additional bilge pump - Manual	178		CKL712	Name on stern (mandatory Reg. boats)	135
CKL329	Opening hatch in heads in lieu std.	209		CKL714	Boat lift to own transport	264
CKL330	Opening window aft cabin to cockpit	195				
CKL332	Extra saloon hatch over table	271				
CKL337	Roller blind	70				
CKL347	Lee cloths - fwd cabin x 2	138				
CKL347	Lee cloths - forward cabin x 2	138				

These prices are for items fitted at the most appropriate stage of construction in the factory. Any changes to specification after contract freeze date or after completion will be subject to extra charge. (Note all prices are EX VAT)