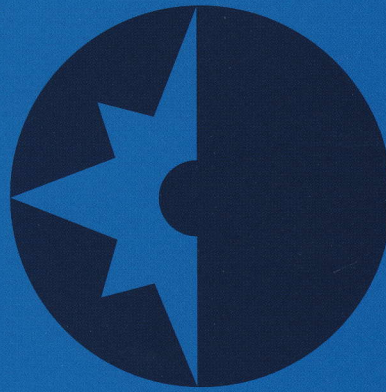




**WESTERLY**

**GK33**

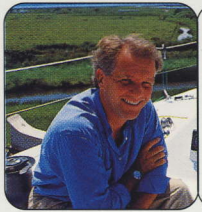
*High performance plus cruising comfort*



**GK**  
**33**







*"The GK33 is a modern high performance yacht that puts the emphasis on performance but also provides a surprising degree of cruising comforts"*

Ed Dubois

Designed by the renowned Ed Dubois, the remarkable new GK33 is a yacht that combines superb sailing performance with the exceptional interior spaciousness that is so much a part of Westerly's much admired cruising style.

# GK33

traditional values of craftsmanship in its build quality, combined with modern innovations to provide lightweight and stiffness in construction. The technologically advanced SCRIMP process is used in the hull moulding which combines lightweight and high impact resistance. Further, because vinylester resin is infused in the laminate, osmosis, resistance is a by-product of the system. Built within strict guidelines, she is CE and RCD compliant and meets ISO 9001 and EN 29001 standards. Apart from being conceived as a superb cruising boat, the GK33 has been configured to compete successfully in top-level events run under the IRC rating system and the new IR 2000 rule. Her deck and cockpit have been laid out for maximum crew efficiency

and all the deck gear for serious racing comes as standard. The GK33 has already taken on and beaten the best in her first-ever regatta. In keeping with the spirit of these rules, will take on a completely different character when the competition is over. With good headroom and accommodation for up to six people, the surprisingly roomy interior is furnished to the familiar high standard of quality associated with all Westerly Yachts.

As a Westerly owner, you will also benefit from the continuing support and advice of our world-wide network of dealers. From finance and insurance to maintenance and repairs, you are guaranteed all the help you might need for as long as you sail a Westerly.

However competitive your spirit, the GK33's performance pedigree and construction standard is sure to provide a winning combination.

The GK33 takes an already fast, comfortable and seaworthy yacht and gives it a distinctive performance edge. Designed by the renowned Ed Dubois, the GK33 features a specially developed new rig and deck layout so ensuring impressive performance without compromising safety and ease of handling. A deeper lead keel complements a hull that is stiff, powerful and well-balanced. The relatively fine entry at the waterline provides excellent windward ability, while the topside sections in the bow give good reserve buoyancy and sufficient volume to ensure a well-balanced hull when reaching. The aft cockpit is both secure and comfortable, and the powerful stern is designed to extend the sailing length as far as possible.

Configured for performance, the GK33 naturally retains Westerly's





## GK33 – Key Features

### Construction

The GK33 is built using the technically advanced SCRIMP process, successfully pioneered in Europe by the Westerly Group's composite division. The process utilises osmosis resistant vinylester resin infused through a laminate which includes kevlar and balsa core under vacuum which ensures even cover and total penetration. The process increases strength and ensures a guaranteed construction standard for minimum weight. Moulded trim line. Retrousse stern with bathing platform.

### Keel

Low centre of gravity lead/antimony with backing plates, stainless steel studs and twin locking nuts.

### Rudder

GRP with stainless steel stock. Tiller with adjustable extension.

### Deck/Cockpit

Non-slip finish on sidedecks and coachroof. Stainless steel handrails. Bulkhead compass. Mainsheet track and traveller. Drained gas locker. Chain locker. Single bow roller. Anchor locker. Stainless steel pulpit and split stern pushpit with ensign socket. 24" stanchions with twin stainless steel lifelines. Headsail tracks port and starboard with control lines and adjustable cars. Two 2-speed primary winches. Two 2-speed self tailing halyard winches. Two winch handles. Spinnaker deck hardware. Four mooring cleats. Alloy toerail.

### Mast and Rigging

Silver anodised keel-stepped mast with tapered top section. Silver anodised boom with sheaves for reefing lines. Double swept spreaders. Sheaves and exits for all halyards. Permanent backstay with cascade system adjuster. Spectra mainsail and genoa halyards (2). All other running rigging in low stretch polyester. Rod kicker. Sail cover with logo.

### Sails

Performance mainsail with 2 sets of reef points with battens, sail bag and 4 sail ties. Working jib with hanks.

### General Equipment

Anchor with chain and warp. Four fenders, two mooring warps. Dry powder fire extinguisher. Gaz bottle. Manual bilge pump.

### Electrical

Stern light. Bi-colour bow light. Steaming light. Deck light. Two 95a/h batteries. 60a/h alternative 12v switch panel with circuit breakers.

### Engine

Yanmar 20HP diesel saildrive with folding 2-bladed propeller.

### Tanks

100 litre fuel tank. 150 litre water tank.

### Interior

All woodwork in teak. Removable deckhead panels. Upholstery in a choice of fabrics. Special teak and holly effect laminate sole.

### Forward Cabin

Double berth. Escape/ventilation hatch. Stowage under berths.

### Heads

Marine WC. Hot and cold pressure water system. Shower with pumpout. GRP moulded washbasin and top. Wet hanging space. Opening port light.

### Saloon

Table with bottle stowage. Ventilation hatch. Two single berths. Side lockers and shelving. Curtain rail. Stowage under berths.

### Aft Cabin

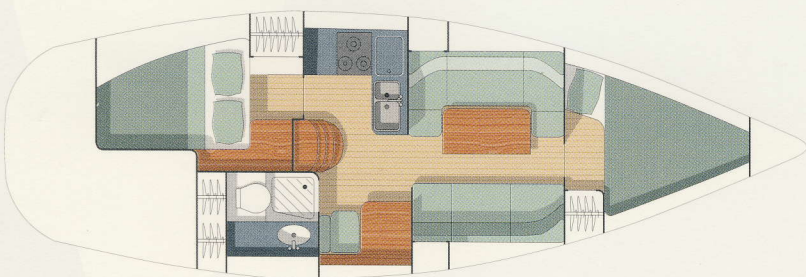
Double berth. Vanity unit. Clothes lockers and storage under berth. Access panel to engine. Opening window.

### Navigation Area

Chart table with stowage. Provision for instruments. Red/white chart light. Separate navigator's seat.

### Galley

Gimballed 2-burner cooker with oven and grill. Hot and cold water supply to double sinks. Drawers and storage lockers. Insulated cool box.



## Specifications

### GK33

Length overall	10.15 m	33'4"
Length waterline	8.60 m	28'3"
Beam overall	3.40 m	11'2"
Draft	1.82 m	6'0"
Displacement (approximately)	4,500 kgs	

### Sail areas

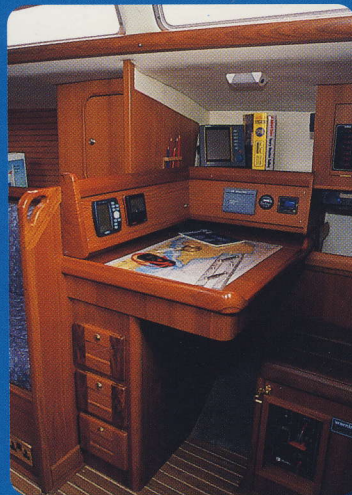
Main and Fore tri	59.85 m <sup>2</sup>	640ft <sup>2</sup>
-------------------	----------------------	--------------------





## Your Westerly

Each new Westerly is built to our customers' individual requirements and our team of highly experienced sales and production experts will be delighted to discuss details of specification changes you may wish to make. If you have a yacht to trade in, you may rest assured that our expertise and guidance on value is backed by years of experience in the sale and purchase of thousands of new and used Westerlys, secure in the knowledge that we can prove how Westerly Yachts command the highest of second hand values. Why not call us now for further information and join the discerning breed of Westerly owners who will truly agree, the purchase of the Westerly Yacht was **'one of life's better decisions'**.



The standard inventory of some models may change. Please refer to the current specification sheet. Pictures within this brochure may show a boat fitted with optional extras.

Call us for more information, or to arrange a test sail.

**Telephone +44 (0)1703 455233**



## WESTERLY

Westerly Group Limited  
Hamble Point Marina  
School Lane  
Hamble  
Southampton SO31 4NB  
Telephone + 44 (0)1703 455233  
Facsimile + 44 (0)1703 455999  
e-mail [westerly@btconnect.com](mailto:westerly@btconnect.com)  
[www.westerly.co.uk](http://www.westerly.co.uk)

*A member of the Marigot Group*

### Skipshandel Stavoren

**Post** : Pastorieweg 22 8721 GS WARNS-NL  
**Bezoek** : op Marina Stavoren/Binnenhaven  
**Site** : [www.waterwerf.nl/skipshandel](http://www.waterwerf.nl/skipshandel)  
**Telefoon** : 0514 684 694 Fax: 0514 68 1975