

WHAT'S
NEW IN
92





Westerly Yacht Construction have been building on the strengths and developing the style that is Westerly.

All yacht specifications are constantly reviewed. Roller reefing headsails and in-mast furling are now standard on larger Westerly cruising yachts.

Improvements to the standard of joinery is evident in many 1992 Westerlys. A significant upgrade is the adoption of teak laid side decking as standard on many yachts.

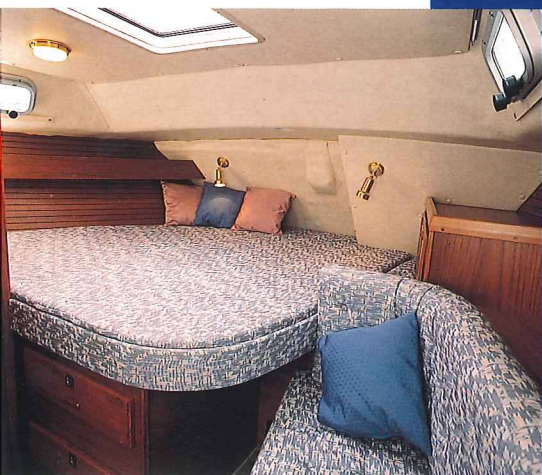
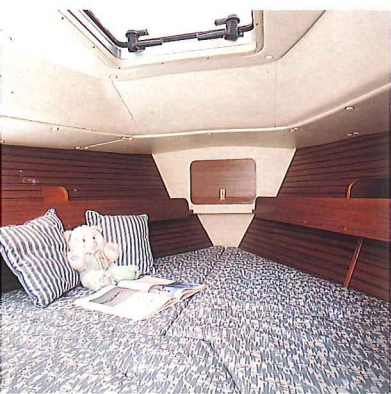
We are striving to ensure that the standard of appearance and sailability of the 1992 Westerly matches the quality of design and build specification for which Westerly is renowned.

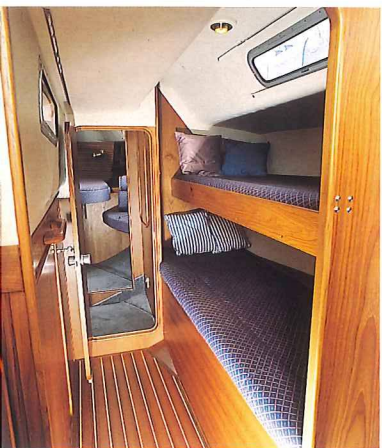
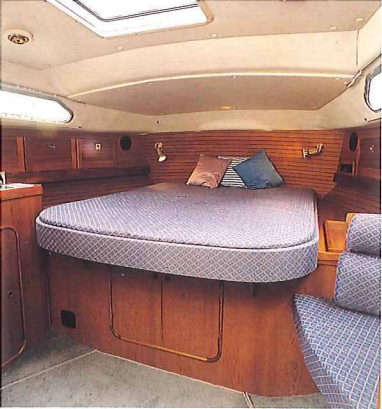
Oceanranger 38

Oceanranger 38's generous fore cabin illustrates the warm feel and refined look of the teak on the hull sides, which is being introduced as standard across the range.

A new stylish yet practical work surface enhances the fully equipped galley.

Customised aft cabin with a special contoured sofa alongside a larger bed with built-in drawers.





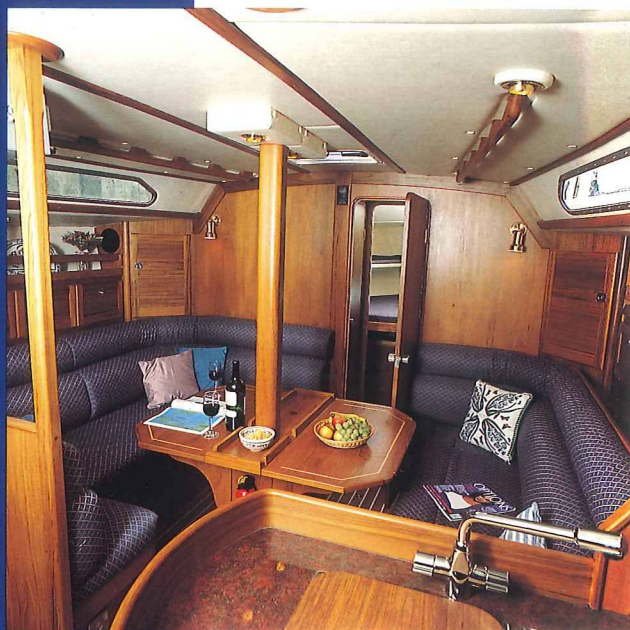
Oceanlord 41

Now features a dramatically improved aft cabin. A full size double bed is now centrally located, and both headroom and floorspace have been increased. Fluted teak on the hull sides and transom and new inset halogen lighting complete the picture.

The optional navigator's cabin can be supplied with two berths, illustrating the degree of customisation now available on a new Westerly.

New galley worksurface and new upholstery fabrics combine practicality and style.

Teak laid side decks, roller reefing genoa and in-mast furling are now standard on both Oceanranger and Oceanlord.

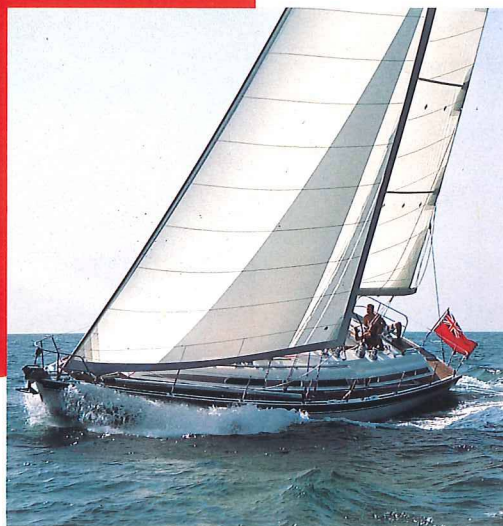


Oceanmaster 48

Now offers a higher degree of customisation and extensive range of optional features which enable each yacht to be tailored to meet demanding individual requirements.

These include minor alterations to the standard layout, extra berths, marble worktops in the galley, fresh water makers, bow thrusters and state-of-the-art electronics.

An optional hard top provides a sheltered steering position with full standing headroom.



Riviera 35

A recent Riviera 35 leaving the yard shows the new style windows. The saloon has been adapted to retain superb all round visibility; and the galley layout is much improved. Good reasons to take another look at this deck saloon cruiser.



Fulmar 33

Fulmar 33 now features a useful boarding and bathing platform; and joinery has been improved to match the latest Westerly specification.

The new Fulmar can be readily equipped and adapted to meet the demanding Code of Practice for Sail Training Vessels.

Ask for the new Fulmar 33 brochure for further details.

Storm 33

Storm 33 has now been standardised, with some of the comforts of the cruising model being added to the performance model.

Spirit 25

The brand new Spirit 25 introduces the experience of Westerly sailing to a new generation of yachtsmen, at a very affordable price. Ask for a brochure.

With every new Westerly launched, we aim to enhance the tradition appreciated by thousands of customers over two generations.

We can now offer a choice of options and a unique degree of customisation to satisfy the most demanding. Come and see for yourself which of the latest specification Westerly yachts could now match your own requirements and lifestyle.



The quality assurance of all aspects of Westerly Yacht Construction is now confirmed by BS 5750 (ISO 9001).



We welcome all makes and models in part exchange.