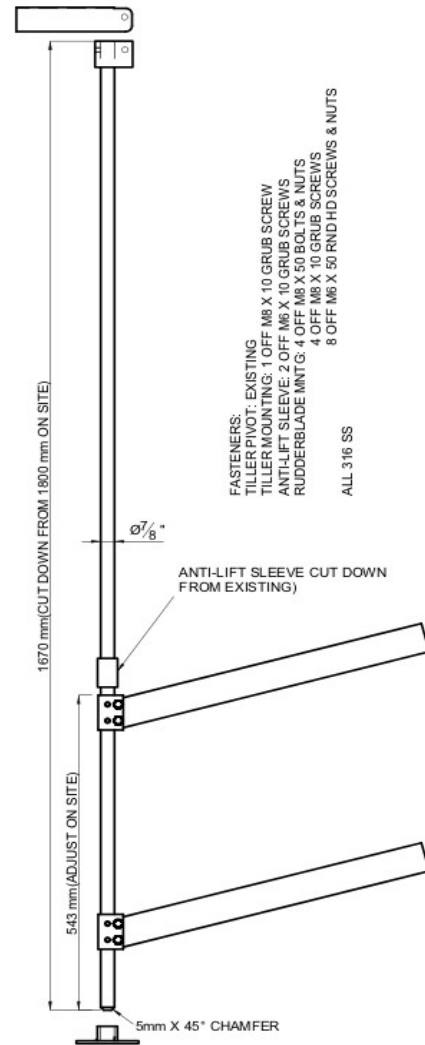


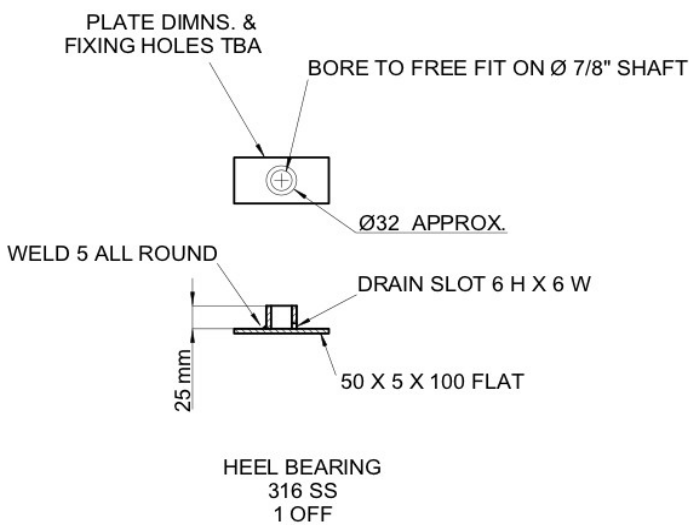
Westerly 22 rudder design

In some bad winter weather we lost our rudder while on the swinging mooring. As we were trying to avoid a lift out or dig a large hole in the mud, the design is such that the bar drops in from the top and sliding through the the rudder blade mountings.

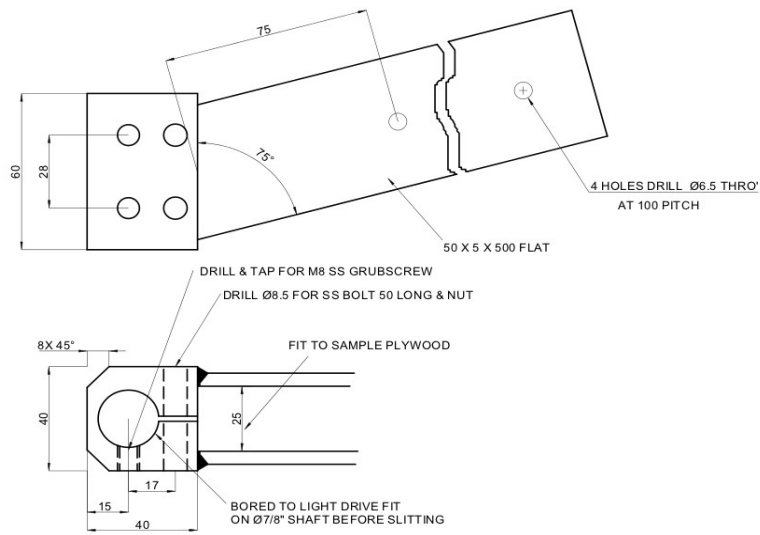
The heel bearing was never used as the bottom of the bar slotted nicely into the existing foot on the skeg.



Rudder assembly

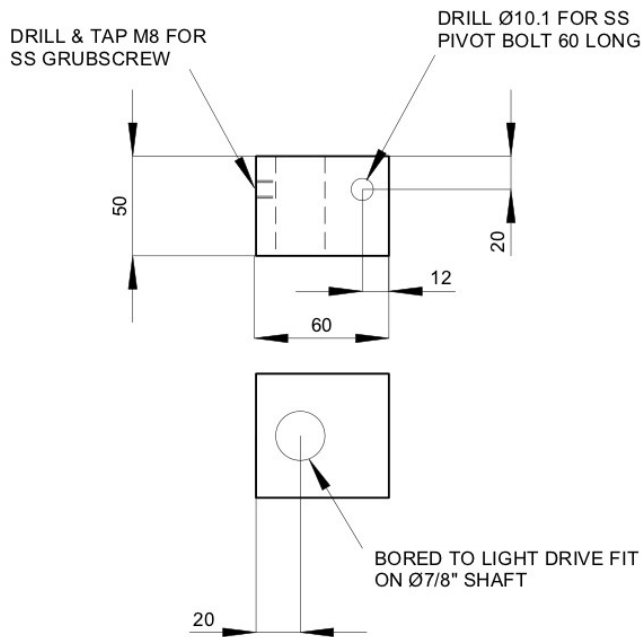


The heel bearing.

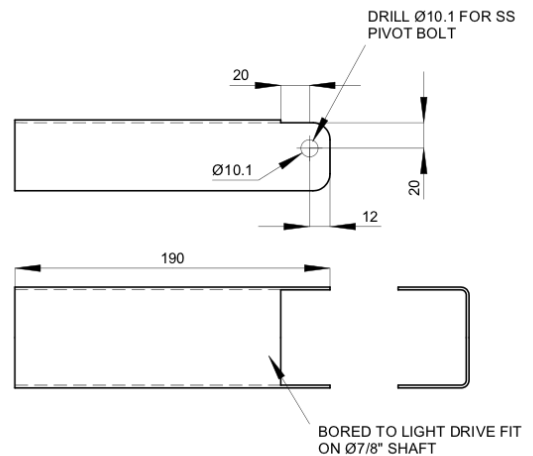


**RUDDER BLADE MNTG.
2 OFF**

Rudder blade mounting (2x)



**TILLER MOUNTING
1 OFF**



**TILLER MOUNTING
MATL: 3 mm 316
THINNER OK IF REINFORCED
AT Ø10.1 HOLE)
1 OFF**

