

WESTERLY

SEACRAFTSMANSHIP



 **WESTERLY**
Merlin 29

I

t would be an unusual yachtsman indeed who had never dreamt of owning a new yacht. And for most, it's got to be the right yacht – well built, comfortable, and capable of safe yet exciting performance.

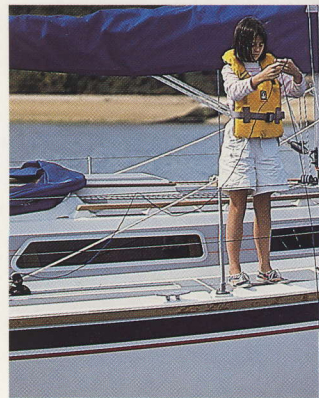
A Westerly, in fact. And what better introduction to Westerly Seacraftsmanship could there be than the Merlin 29?

The 29 is based on the hugely popular Merlin 28, a yacht which has introduced more yachtspeople and their families to Westerly sailing than any other. Ed Dubois has refined and updated the design of the hull, while the interior has been given a thoroughly modern, practical rethink.

None of the virtues of the old Merlin have been cast aside, however – the sturdiness, safety and convenience Westerly owners expect is all still there.

The guardrails are high enough to protect children in harbour or at sea. All the control lines are led aft to the cockpit, so the boat can be easily controlled by one or two people.

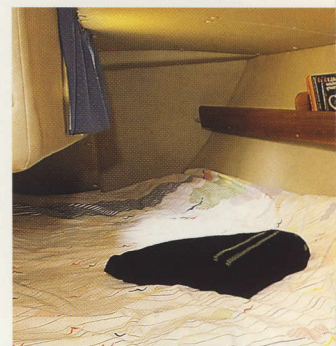
All the deck fittings are engineered to withstand a lifetime of use, and none of the scantlings are skimped; you won't find many 29 footers with bow, stern and spring cleats,





for example.

Cast off, and you're in for another surprise. Getting out of the marina under power is simple, with the responsive Volvo engine. Putting the sails up is easy – this is a 29 footer – and then the Merlin 29 can really show what she's made of.



The tiller is light, and with all the lines in easy reach you're soon trimmed perfectly – and sailing rather more quickly than you might expect from a yacht this size. The extra foot has been added where it counts to maximise waterline length, and therefore increase speed under sail.

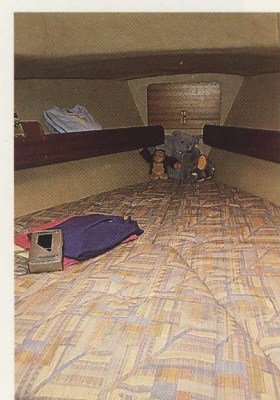


The Merlin is also very close winded, and despite her crisp turn of speed remains stable and easy whatever the conditions.

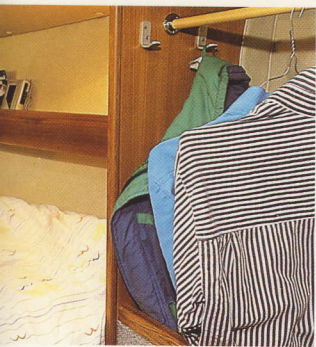
Below, there are yet more surprises. The first is the pleasantly spacious saloon, with



its designer fabrics and high quality teak finish. There is a spacious and practical navigation area, and plenty of storage space. The galley is one that would not shame a much larger yacht, with a gimballed cooker with oven and grill, stainless steel sink and insulated ice box.

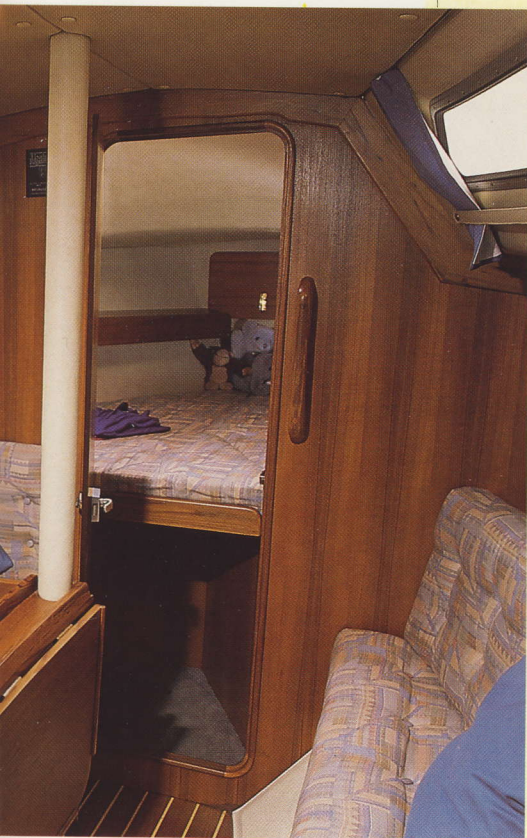


The three separate cabins, including a very generous aft cabin, offer the crew of six



privacy and comfort, with lockers for seagoing clothes and shoregoing clothes, fabric coverings on all berths and a separate heads compartment.

Each Merlin is built to Westerly's usual impeccable standards, and carries the Lloyds



Hull Construction Certificate. Lloyd's surveyors inspect every hull each week during construction, and if they're not satisfied it doesn't get a certificate. Without a certificate, it won't be released from the factory.

We also work to British Standard 5750, which makes sure our quality control is as good as it's possible to make it.

Construction takes place under carefully controlled conditions of temperature and humidity using the very finest materials,





including the most advanced resins, strong GRP reinforcements, solid brass skin fittings and timber hand selected by our own craftsmen. Every hull is protected by a double layer of gelcoat, inside and out.

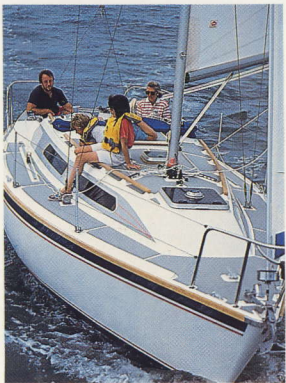
The care we take when we build your yacht



is reflected in the high resale value a Westerly yacht commands. We even offer a full after-sales advisory service.

The Merlin 29 is a perfect introduction to the Westerly concept of Seacraftsmanship. The perfect combination of performance and comfort, built to give the maximum amount of sailing pleasure for years and years to come.

Take a test sail on a Merlin. And find out what Seacraftsmanship could mean to you.



THE WESTERLY

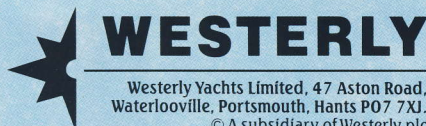
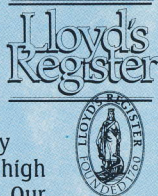
Merlin 29

SAIL AREAS		
Mainsail	208ft ²	19.3m ²
No. 1 Genoa	236ft ²	21.9m ²
No. 2 Genoa	192ft ²	17.8m ²
No. 1 Jib	129ft ²	12.0m ²
Storm Jib	46ft ²	4.3m ²
Spinnaker	410ft ²	38.1m ²
SPECIFICATIONS		
Length Overall	29' 0"	8.84m
Length Waterline	23' 62"	7.20m
Beam	9' 94"	3.03m
Draught – Fin	5' 01"	1.53m
– Twin	3' 36"	1.03m
Mast Height Above Waterline	36' 70"	11.19m
DESIGNED WEIGHTS		
Displacement	7694 lb	3490 kg
Ballast – Fin	2987 lb	1355 kg
– Twin	3329 lb	1510 kg

Specifications and standard inventory are liable to change according to availability of bought in and manufactured supplies. Some items shown in the photographs are not included in the standard price.

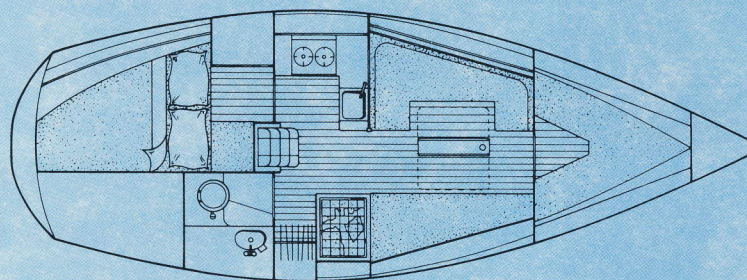
CONSTRUCTION STANDARDS

Lloyds Hull Construction Certificate. Double gelcoat to both external hull and internally to waterline. Temperature and humidity controlled laminating. Very high degree of lamination control. Our own carefully selected teak. Quality control system with 200 Lloyds approved items. Solid teak toe rails grab handles and rubbing strake for durability. 316 high grade stainless steel from our own fabrication factory. Fire resistant foam in all upholstery. Keel studs above Lloyds specification with locking nuts. Stainless steel water tanks.




THE WESTERLY RANGE – OCEAN CRUISING YACHTS – OCEANMASTER 48, OCEANLORD 41, OCEANRANGER 38. PERFORMANCE YACHTS – TYPHOON 37, STORM 33, TEMPEST 31. FAST CRUISING YACHTS – SEAHAWK 35, STORM CRUISER 33, FULMAR 32, KONSORT 29, MERLIN 29. DECK SALOON YACHTS – RIVIERA 35.

SALES OFFICES: HAMBLE POINT (0703) 455233, Brighton (0273) 609556, Ipswich (0473) 681677, Plymouth (0752) 672828. DISTRIBUTORS: Scotland and N. Ireland – Euroyachts Ltd. – Glasgow (041) 429 3766. S. Ireland – Neil Watson Ltd. – (0001) 806070. N. England and N. Wales – Dickies of Bangor – (0248) 352775. S. Wales – Dickies of Swansea – (0792) 645303. Channel Islands – New Horizon Yachts Agency – (0481) 26335. West Germany – (04562) 6247. Netherlands – (5149) 1566. Belgium – (3) 232 1210. France – (99) 885601 – (40) 820464 – (94) 434594. Japan – (03) 210 4480. Portugal – (1) 2844248. Gibraltar – (Gib) 76710. AFTER SALES SERVICE (0705) 256406.



The only sailboat builder in the world with BS5750.



 100 Freefone Westerly Yachts. Demonstrations are available 7 days a week.

unusual yachtsman indeed
dreamt of owning a new
it's got to be the right yacht
stable, and capable of safe
hance.

fact. And what better
Westerly Seacrafts-
ere be than the

ed on the hugely
a yacht which has
yachtspeople and
esterly sailing than
ois has refined and
design of the hull,
or has been given
rn, practical rethink.
virtues of the old
cast aside, however
safety and con-
owners expect is

are high enough to protect
or at sea. All the control lines
ockpit, so the boat can be
one or two people.
fittings are engineered to
e of use, and none of the
ed; you won't find many 29
stern and spring cleats,



for example.

Cast off, and you
Getting out of the moor
with the responsive
sails up is easy – this
Merlin 29 can really

The tiller
the lines in ea
trimmed per
rather more q
expect from a
extra foot has
counts to m
length, and
speed under

The Merlin
winded, and c
of speed rem
whatever the

Below, th
surprises. T
pleasantly sp

its designer fabrics a
There is a spacious
area, and plenty of s
one that would not s
with a gimballed c
stainless steel sink a

The three sepa
very generous aft c

you're in for another surprise. marina under power is simple, ve Volvo engine. Putting the his is a 29 footer – and then the lly show what she's made of.

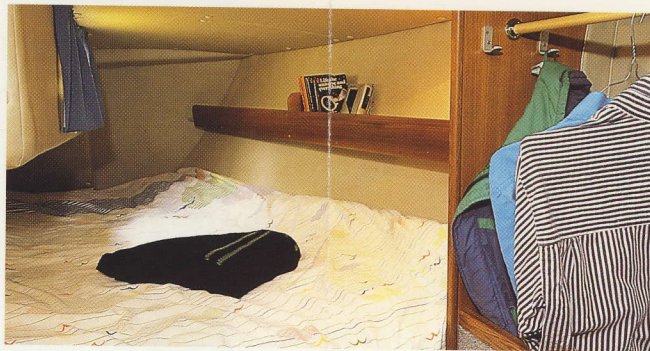
er is light, and with all easy reach you're soon perfectly – and sailing quickly than you might in a yacht this size. The as been added where it maximise waterline and therefore increase r sail.

Merlin is also very close despite her crisp turn remains stable and easy e conditions.

there are yet more The first is the spacious saloon, with

and high quality teak finish. us and practical navigation f storage space. The galley is shame a much larger yacht, cooker with oven and grill, and insulated ice box.

parate cabins, including a cabin, offer the crew of six



privacy and comfort clothes and shoregear on all berths compartment.

Each Merlin is impeccable standard



Hull Construction surveyors inspected during construction satisfied it does

a certificate, it was factory

We also work which makes sure of as it's possible to maintain

Construction takes controlled conditions humidity using the

