

# W L O

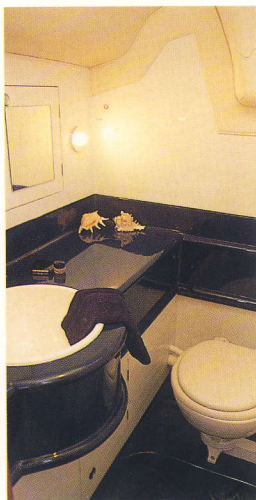
 **regatta**  
310



Right in the middle of the Regatta range, the 310 brings together the sparkle of an Ed Dubois hull design and the style of the Ken Freivokh interior, in a boat that will thrill club racers and cruising families alike. Single or twin keels, a powerful but easily handled fractional, twin-spreader rig and probably the biggest cockpit of any yacht in this class, Regatta 310 is a rewarding sailing craft, and an able cruising yacht.

Safety features come as standard with Regatta, from the effective non-slip surface on the working deck, to the bare teak grabrails on the coachroof, that ensure a good grip when conditions test crew and boat alike. All sail controls lead back to the cockpit where twin banks of rope clutches help the winches do their job and even the lead of the main-sheet has been considered; not threatening fingers and heads in the middle of the cockpit but taken right aft where it is easy to handle but out of the way.





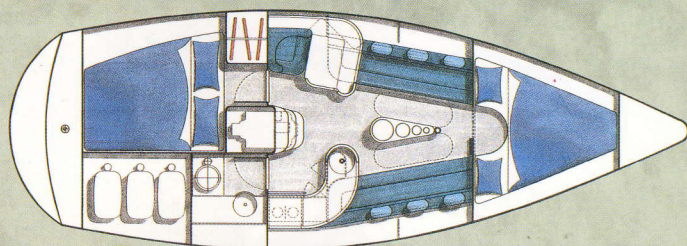
In the saloon, a well-equipped and spacious galley to starboard, complements the navigation area to port, both these vital working areas of the boat being close to the crew on deck, but also convenient when it's time to relax below. Stowage for food and other galley essentials is generous, while navigators will delight in the stowage for charts and almanacs, plus the liberal space for instruments and electronics. Westerly's combination of quality and technology is evident in the comprehensive, illuminated circuit breaker-controlled electrical panel.

A full double berth cabin aft and another forward, are the permanent berths in the Regatta 310, but the original treatment of the saloon settees not only renders them comfortable seats for day use, but also allows their service as bunks should your sailing complement warrant it.



And even with a full crew aboard there is still more than sufficient stowage, with lockers flanking the saloon above the settee backs, stowage beneath the bunks and in a full hanging locker in the after cabin.

The 310 boasts Regatta's attention to detail and the hand-crafted timber finish that sets the boats apart. Cleverly angled lockers, curved laminations of Cherry, solid timber sculpted for hand-holds, fiddles and even as housings for stereo speakers; the Regatta style sets new standards for finish and quality.



#### SAIL AREAS

Mainsail	242ft <sup>2</sup>	22.48m <sup>2</sup>
No.1 Genoa	291ft <sup>2</sup>	27.03m <sup>2</sup>
No.2 Genoa	238ft <sup>2</sup>	22.11m <sup>2</sup>
No.1 Jib	187ft <sup>2</sup>	17.37m <sup>2</sup>
Storm Jib	60ft <sup>2</sup>	5.57m <sup>2</sup>
Spinnaker	615ft <sup>2</sup>	57.13m <sup>2</sup>

#### DESIGNED WEIGHTS

Displacement	9020lb	4091kg
Ballast - Fin	2690lb	1220kg
- Twin	2866lb	1300kg

#### SPECIFICATIONS

Length Overall	30'4"	9.25m
Length Waterline	24'6"	7.47m
Beam	10'10 1/2"	3.31m
Draft - Fin	5'0"	1.52m
- Twin	3'9"	1.14m
Mast Height above Waterline	45'11"	14.00m