

What exactly is a performance cruiser? A yacht that performs well, obviously. But, to qualify as a cruiser, it must also be easy to sail and comfortable to live on.

To anyone who is used to heavily-crewed racing craft or the traditional slow cruising boat, it might seem that the performance cruiser is therefore an impossibility. Not so.

Because now there's the Typhoon 37 from Westerly. It has the sleek, elegant and purposeful lines of a thoroughbred. The performance to match. And yet the comfort, balance and stability of a true cruiser.

Stepping aboard, the impression of cleanness in the Typhoon's lines is continued close up. All the control lines are led in garages under the deck back to the efficient T-shaped cockpit, where there is plenty of room for a racing crew to work and yet everything is still within easy reach for the short handed cruising yachtsman.

The usual deck clutter has been given some thought; there's a locker for the anchor, the cockpit locker is cavernous, and even the diving platform at the stern has self-draining lockers for drinks and swimming gear.

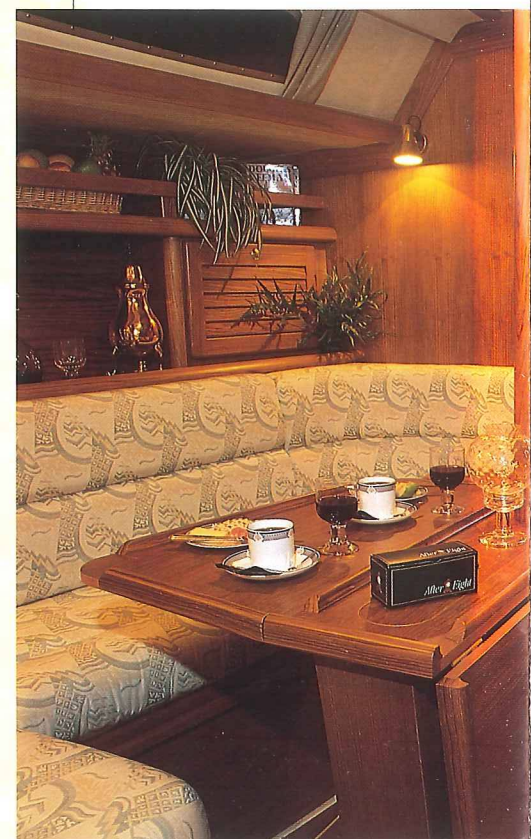
Wheel steering is standard, but there is a tiller option for those who prefer it. With either system, control under way is light, balanced and responsive under sail or power.

Engine power comes from either a 28 hp or an optional 43 hp Volvo unit, and sail power is provided by a $\frac{7}{8}$ fractional rig on a tapered mast. With Ed Dubois' computer-optimised hull shape, the Typhoon is capable of strong performance under sail, but her form stability means that whatever the conditions, she's still a boat that inspires confidence.

And if it's performance you want, the Typhoon is well



capable of being tuned for racing. You can specify the club racing package for your yacht, which gives you a series racing number. Then there's spinnaker gear, the high tech mainsail and Mylar number one, a second headsail halyard, a

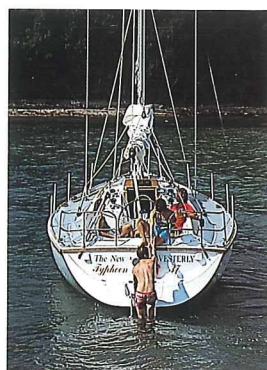


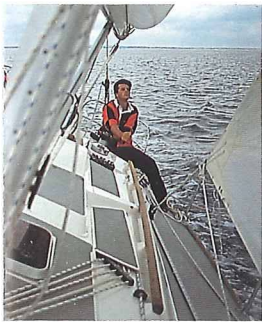
folding propeller . . . the extended options list allows you to set up the boat for precisely the balance of cruising and racing you want.

And whether you want to spend your weekends bashing round the cans or take off for an extended cruise, the Typhoon lets you do it in comfort.

The interior is the result of close collaboration between our interior designers, the engineering department and the craftsmen who put it together, using solid selected teak and luxury fabrics.

Starting at the bow, the forecabin offers two crossover berths with a double conversion and stowage, with the first of the two heads just aft.

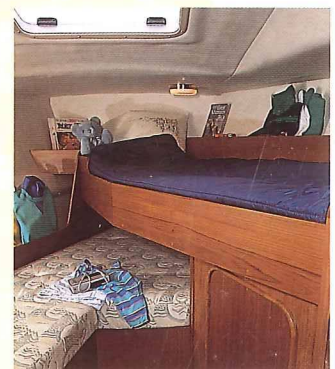
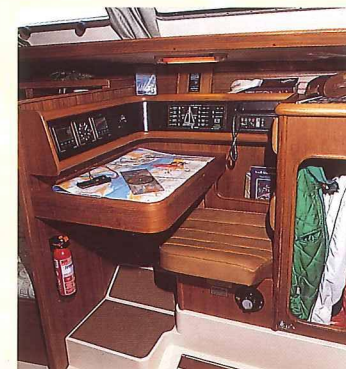
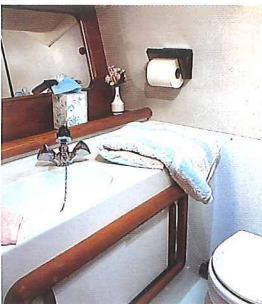




capable of being tuned for racing. You can specify the club racing package for your yacht, which gives you a series racing number. Then there's spinnaker gear, the high tech mainsail and Mylar number one, a second headsail halyard, a



The spacious, light and airy main cabin makes a comfortable and stylish place to relax and entertain; the dining table can easily accommodate a full crew of seven or eight, and opening ports make below a pleasant place to be, even on a



folding propeller . . . the extended options list allows you to set up the boat for precisely the balance of cruising and racing you want.

And whether you want to spend your weekends bashing round the cans or take off for an extended cruise, the Typhoon lets you do it in comfort.

The interior is the result of close collaboration between our interior designers, the engineering department and the craftsmen who put it together, using solid selected teak and luxury fabrics.

Starting at the bow, the forecabin offers two crossover berths with a double conversion and stowage, with the first of the two heads just aft.



warm night.

In the after section of the main cabin to port is the galley area. Superbly equipped for a quick lunch under way or a celebration dinner back in port, it has a double sink, full cooker and a refrigerated, drained icebox.

Opposite on the port side is the efficient, stylish navigation area, with a table that takes a half Admiralty chart and has plenty of room for instruments, and aft of this is the main heads with a built in shower.

The owner's cabin is to be found aft, with its large double berth, wraparound sofa and ample stowage.

Each Typhoon is built to Westerley's usual impeccable standards, and carries the Lloyds Hull Construction Certificate.

