



**It's all aboard
a Westerly!**

Britain's finest family sailing ★

**CRUISERS, RACERS AND A COMPLETE
AFTER SALES SERVICE**

You'll find the boat you really want in the well-built Westerly range

When a Westerly owner buys a new boat, it's usually a Westerly. This simple fact has helped to build us into the country's largest builders of family cruising and racing boats. And to have won us the Queen's Award to Industry three times!

Whence this loyalty?

The Westerly range is wide. We aim to provide just the boat you're looking for — the right size, the right price, the right balance of performance and comfort.

Second-hand values are high — largely because every Westerly has its own Lloyd's Register certificate.

Craftsmanship, after-sales service and the designs by Laurent Giles & Partners and all, we believe, are exceptional.

These are the qualities which win such loyalty from our customers. But don't take our word for it — ask a few people who own Westerlys themselves. We believe they'll confirm everything we say.

GK24 and the new GK29

Westerly's highly successful racers are building up impressive performance histories. Both available as budget boats, as racing versions with IOR certificates, or fully-fitted as club racers.

GK24

LOA 24ft (7.32m) LWL 19ft 7in (6.0m) BEAM 9ft 4in (2.82m) DRAFT 5ft (1.52m)

SAIL 150 sq ft

100%FT (Main 110 sq ft)

WEIGHT 3900lbs (1769kg)

GK29 (Prototype)

LOA 29ft (8.84m)

LWL 24ft (7.32m)

BEAM 10ft 4in (3.15m)

DRAFT 5ft 8in (1.73m)

SAIL 400 sq ft

(Main and 100%FT)

WEIGHT 6900lbs (3130kg)

ENGINE 12hp Diesel



31ft

Exceptional performance and reliability, coupled with a very high standard of interior design and fitting, make these very attractive boats. Choice of rig, fin or twin keel and interior layout.

Longbow (Sloop)

LOA 31ft (9.5m)

LWL 25ft (7.6m)

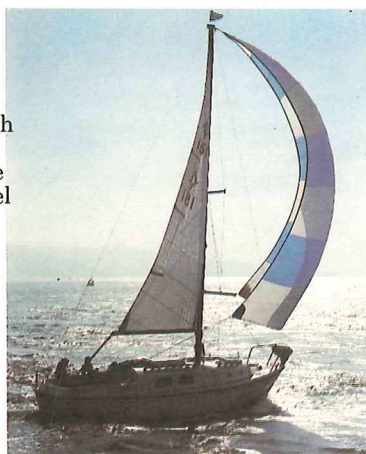
BEAM 9ft 6in (2.9m)

DRAFT 4ft 6in (1.38m)

SAIL 442 sq ft (41.2 sq m)

WEIGHT 9400lb (4264kg)

ENGINE 23hp Diesel



NEW 33ft

Introduced recently to fill the gap between the 31 and 36ft ranges. Choice of rig. New and very popular interior design in wood. W33 (Ketch)

LOA 33.25ft (10.14m)

LWL 28.43ft (8.66m)

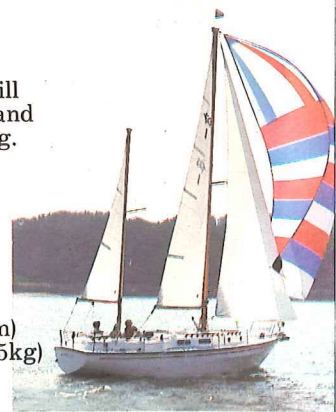
BEAM 11.17ft (3.40m)

DRAFT 5.46ft (1.66m)

SAIL 510 sq ft (47.4 sq m)

WEIGHT 6.74 tons (6505kg)

ENGINE 42hp Diesel



24ft	29ft	21ft	23ft range	26ft range
GK24	GK29	W 21 4 berth	Pageant/Kendal 4/5 berth	Pembroke Centaur 6 berth 6 berth

NEW 21ft

An economically-priced 4-berth boat, ideal for first-time buyers. Excellent headroom. Separate heads. Wooden interior. Optional diesel.

W.21 (Sloop)

LOA 21ft 6in (6.55m)

LWL 18ft 9in (5.70m)

BEAM 7ft 9in (2.35m)

DRAFT 2ft 9in (0.84m)

SAIL 210 sq ft (19.50 sq m)

WEIGHT 3695lbs (1660kg)

ENGINE Optional Diesel



23ft

Sloop rig, fin or twin keel. Westerly 23 footers have proved highly popular family cruising boats. Diesel engine fitted as standard.

Pageant (Sloop)

LOA 23ft 1in (7.00m)

LWL 19ft (5.80m)

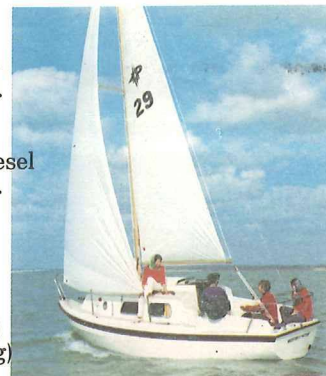
BEAM 8ft (2.40m)

DRAFT 2ft 10in (0.85m)

SAIL 236 sq ft (22.3 sq m)

WEIGHT 4300lbs (1950kg)

ENGINE 13hp Diesel



NEW 35ft

A very recent model, designed to fill the gap between the 33 and 36ft ranges. Newly designed 6 berth interior in wood and a well-tested hull.

W35 (Sloop)

LOA	LWL	BEAM	DRAFT	SAIL	WEIGHT	ENGINE
35.75ft	30.40ft	11.20ft	6.00ft	502 sq ft	7.20 tons	42hp
10.89m	9.26m	3.41m	1.83m	46.6 sq m	7315kg	Diesel



26ft

Includes 23hp diesel. Range offers a choice of three interior layouts — 4, 5 or 6 berth.

Another very successful boat, offering ideal family cruising.

Centaur (Sloop)

LOA 26ft (8m)

LWL 21ft 4in (6.5m)

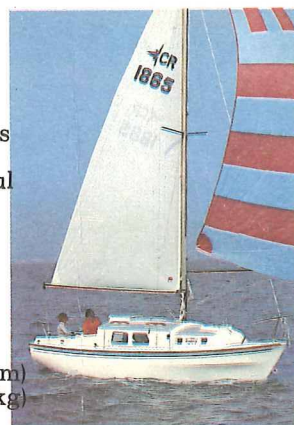
BEAM 8ft 5in (2.6m)

DRAFT 3ft (0.92m)

SAIL 294 sq ft (27.3 sq m)

WEIGHT 6700lb (3039kg)

ENGINE 23hp Diesel



36ft

Ideal offshore cruising boats with unusually spacious accommodation, in a choice of interior layouts.

Conway (Ketch)

LOA 35.75ft (10.89m)

LWL 30.4ft (9.26m)

BEAM 11.2ft (3.41m)

DRAFT 6.0ft (1.83m)

SAIL 656 sq ft (60.9 sq m)

WEIGHT 7.20 tons (7315kg)

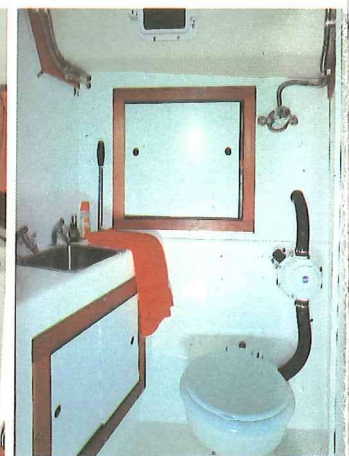
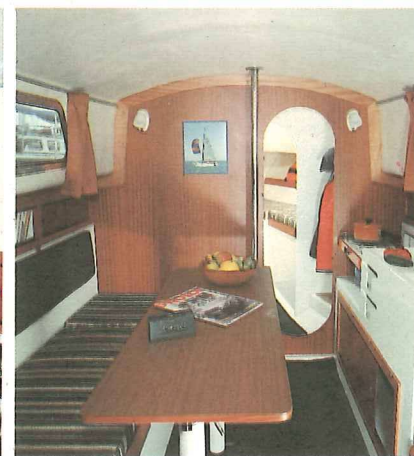
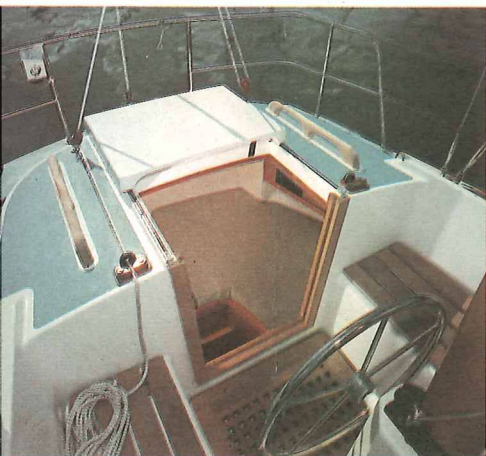
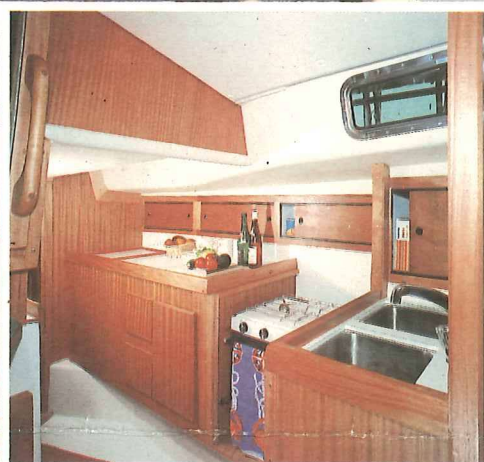
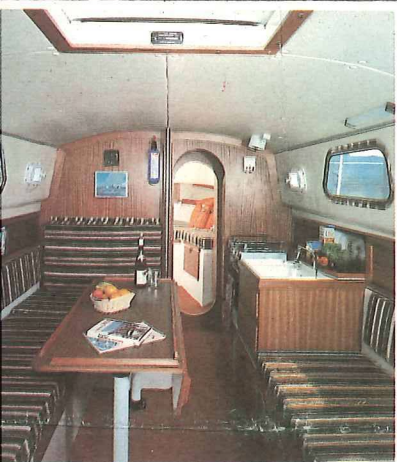
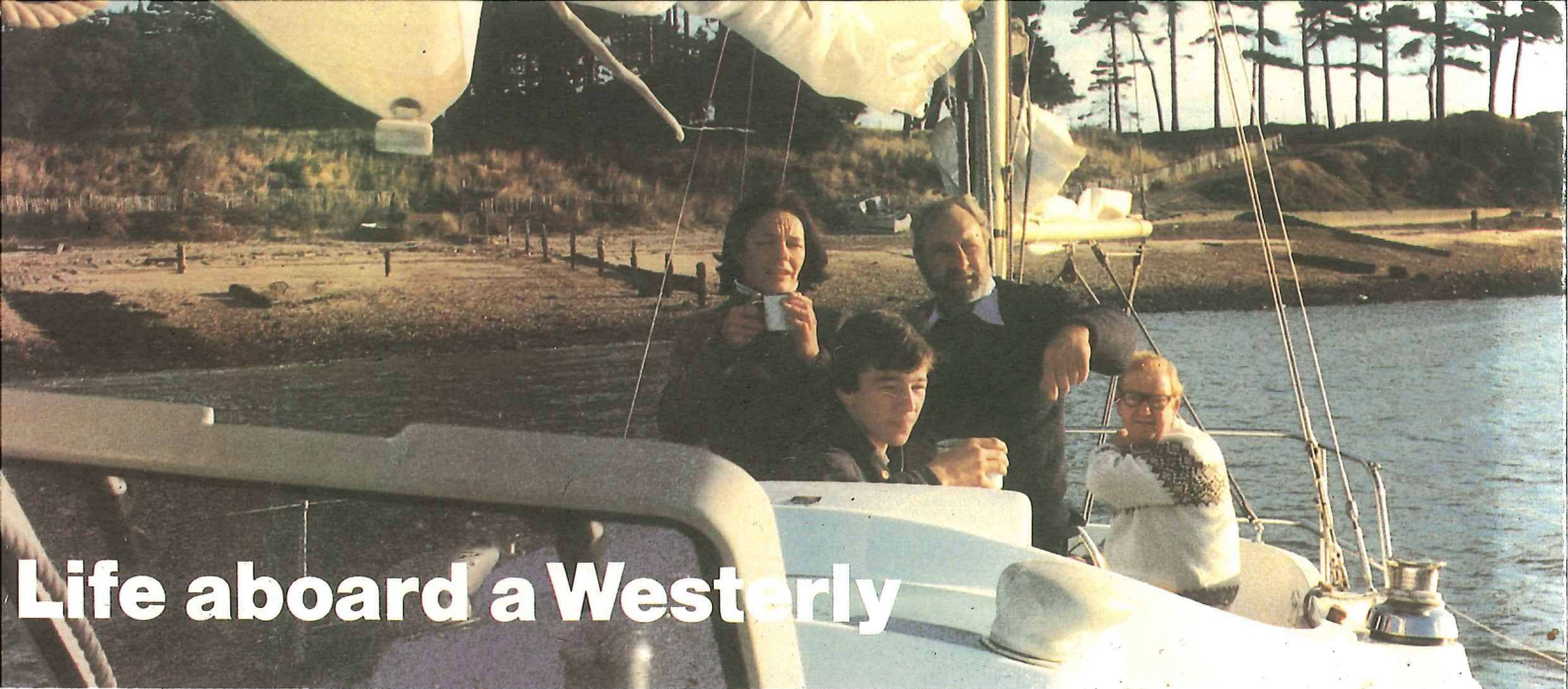
ENGINE 42hp Diesel



COME FOR A TEST SAIL

If you would like to see a Westerly and have a demonstration sail, ring one of Westerly's Sales Centres or your nearest Agent.

31ft range				33ft	35ft	36ft range			
Longbow 5 berth	Renown 6 berth	Pentland 6 berth	Berwick 6 berth	W33 6 berth	W35 6 berth	Conway 6 berth	Medway 6 berth	Solway 6 berth	Galway 6 berth



JULY 1978