

WESTERLY CIRRUS

Outright Winner Yachting World Rally 1968



Fast . . . Full Headroom . . . Fin Keel . . .

WESTERLY CIRRUS

Westerly Cirrus was the judges' unanimous choice as outright winner of the 1968 British Yachting World ONE-OF-A-KIND Rally. In their words the boat is a product of "a great deal of intelligent thought, the boat that most successfully fulfilled its design intention and offered good value for money." Another leading magazine, Yachting Monthly, said of her "she was outstanding, a good all rounder and a worthy winner."

Westerly Cirrus is a four berth glass fibre fin keel sailing cruiser for those who want to cruise leisurely, or race, and have enough space below to enjoy life aboard with their families in maximum comfort.

Cirrus has modern, clean-cut lines with full headroom and light airy cabins. The use of high quality materials keeps maintenance to a minimum and preserves the exceptional finish which our customers expect and which has become the recognised hallmark of all Westerly craft. Each Cirrus has a Lloyd's certificate and a guarantee with reliable after sales service.



Cockpit and deck. The self bailing cockpit is larger than is usual. Its depth is a safety factor and helmsman and crew have an unimpeded view forward. A long tiller allows freedom of movement.

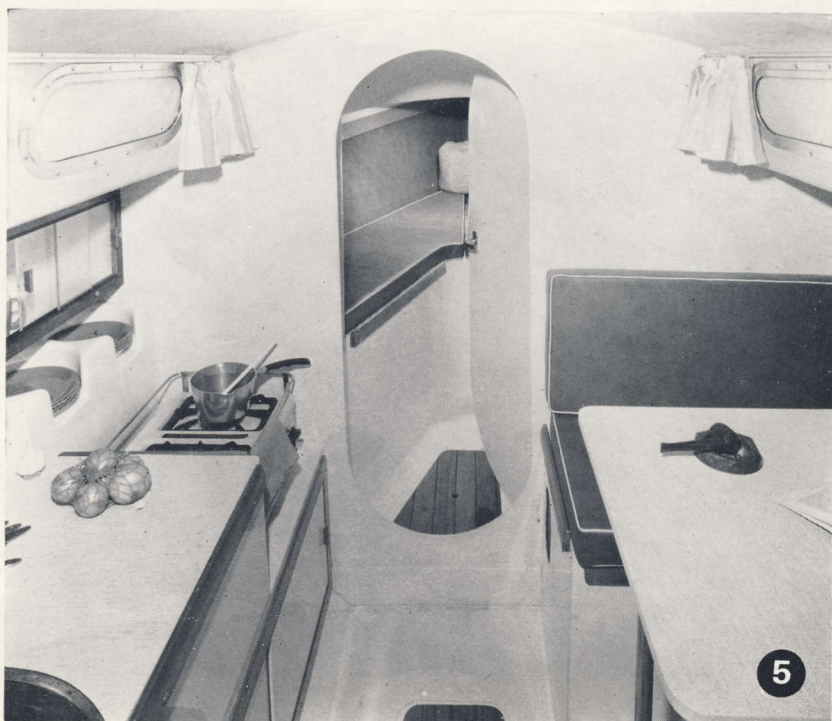
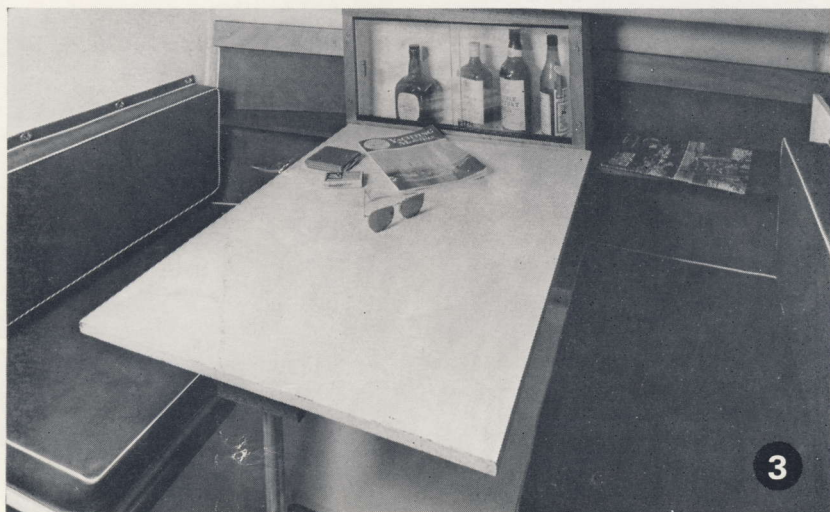
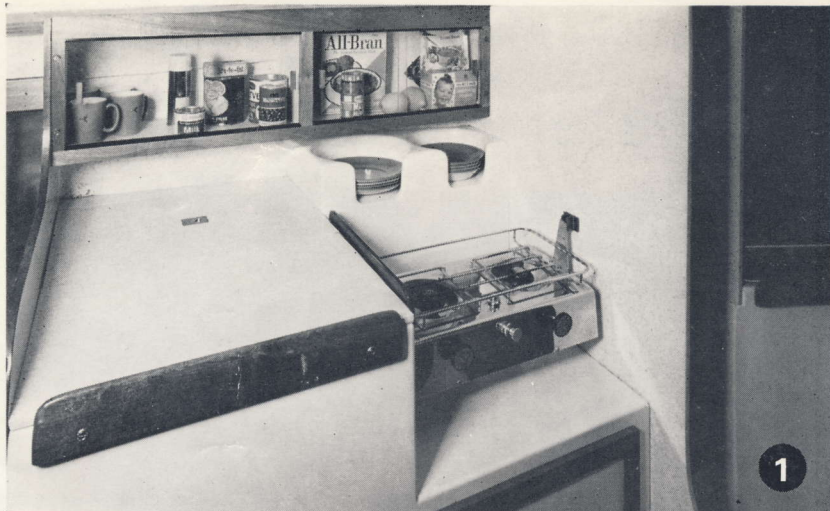
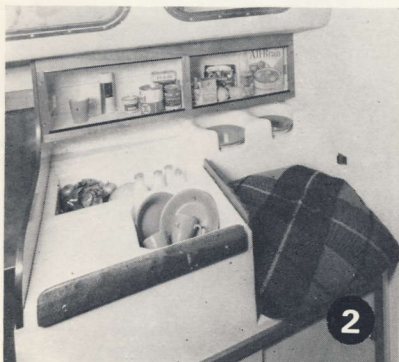
Side decks are wide enough for easy access to the foredeck; lifelines and pulpits are set at just the right height. Lockers under the cockpit seats are deep and roomy.

There are sliding tracks for the main sheet and the jib sheet leads and all deck fittings and standing rigging are of stainless steel or enamel coated marine bronze. Wooden trim is Burma teak or teak faced ply.



Choice of engine. A long shaft 6 h.p. or 9½ h.p. outboard can be mounted on a sliding transom bracket. An inboard Volvo Penta MD1 diesel or 6 h.p. Vire petrol engine can be installed. Both are fitted with remote controls and electric start with 12 volt battery.

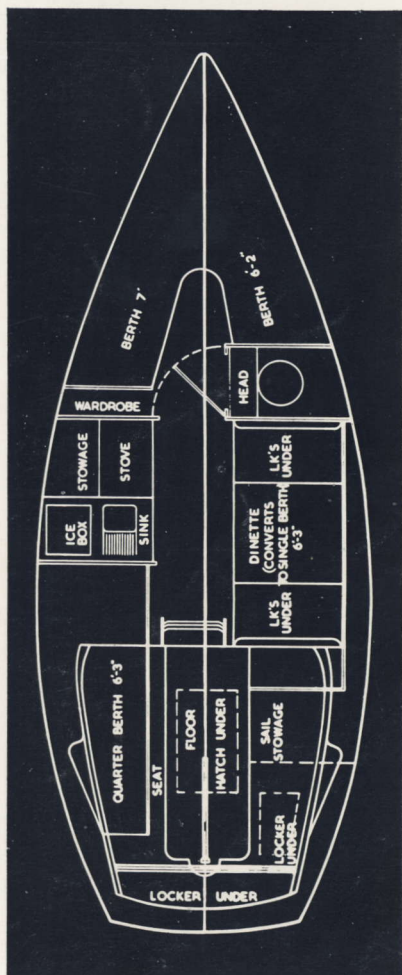
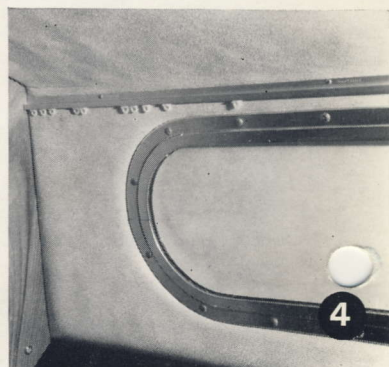
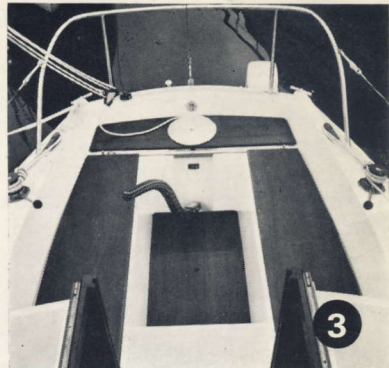
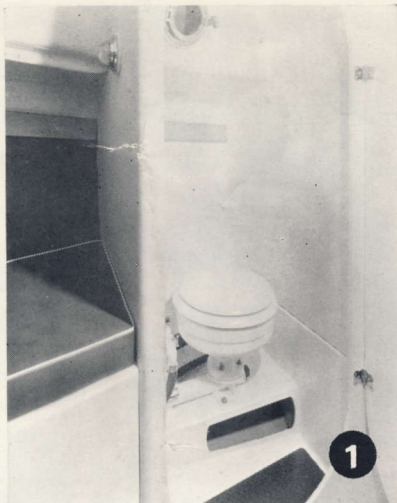
1. A clean, easy to run, compact galley.
2. With a cushion, the stove space makes an ideal seat.
3. Dinette table in position.
4. With table lowered, a wide, comfortable berth is made.
5. The spacious interior makes living aboard comfortable.



Two cabin layout interior. Just as important as deck layout is the design of the interior and Cirrus caters for those who want maximum comfort below. The main cabin has a dinette which converts into a wide berth and which can be used as a chart table. The sink, stove and ice box/cold food store are opposite. Windows are at eye level when the dinette is in use and a quarter berth acts as a seat for lounging. Six feet headroom makes life aboard comfortable, but if you do knock your head, the foam backed vinyl headliner softens the blow as well as helping to eliminate condensation and being easy to keep clean.

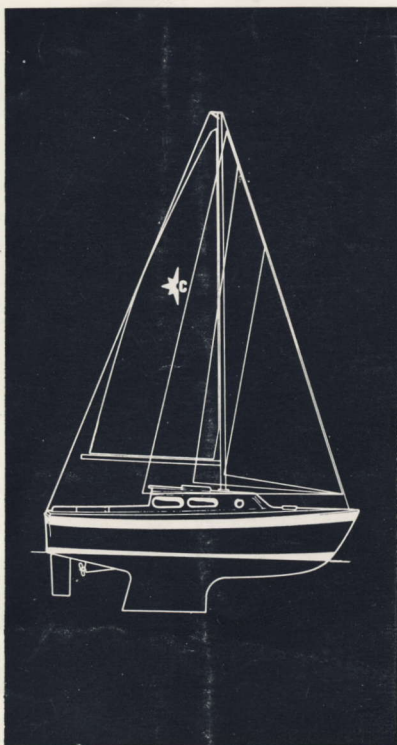
A door separates the two cabins or closes off the marine head. Opposite this a hanging space keeps clothes in good order. In the forward cabin there are two full length berths with lockers under. Good headroom makes changing easy.

1. Roomy closed-off head.
2. Essential hanging space.
3. Large, deep cockpit.
4. Curtain rail over vinyl headliner.



SAIL AREAS

| | sq. ft. | sq. meters |
|-------------|---------|------------|
| Mainsail | 100 | 9.30 |
| No. 1 Jib | 110 | 10.20 |
| No. 2 Jib | 68 | 6.40 |
| No. 3 Jib | 31 | 2.90 |
| No. 1 Genoa | 166 | 15.50 |
| No. 2 Genoa | 150 | 14.00 |
| Spinnaker | 400 | 37.40 |



WESTERLY MARINE

Westerly Marine Construction Ltd
Aysgarth Road, Waterlooville
Hampshire, England
Telephone: Waterlooville 51231

SPECIFICATION

Length Overall 22' 6.7 m.
Length waterline 19' 5.8 m.
Beam 8' 2.44 m.
Draft 3' 6" 1.07 m.
Scale weight 3240lbs. 1470Kgs.
(excluding inboard)
Ballast (iron) 1460lbs. 660Kgs.

Standing rigging
Stainless steel 3/16" dia. or
one/nineteen swaged ends.

Blocks. Stainless steel strapped
Tufnol blocks.

Running rigging
Pre-stretched terylene.
1" circumference three-strand for
halyards.
3/4" circumference three-strand for
lifts.
1 1/4" plaited for sheets.

Masts & Spars Aluminium alloy.
Seacocks & Skin Fittings Marine
bronze.

*The Company is always seeking
improvements and therefore reser-
ves the right to change the specifi-
cation without prior notice.*

Printed in England by Arthur Coomer Ltd