



SAIL ONE BEFORE ONE OUTSAILS YOU.

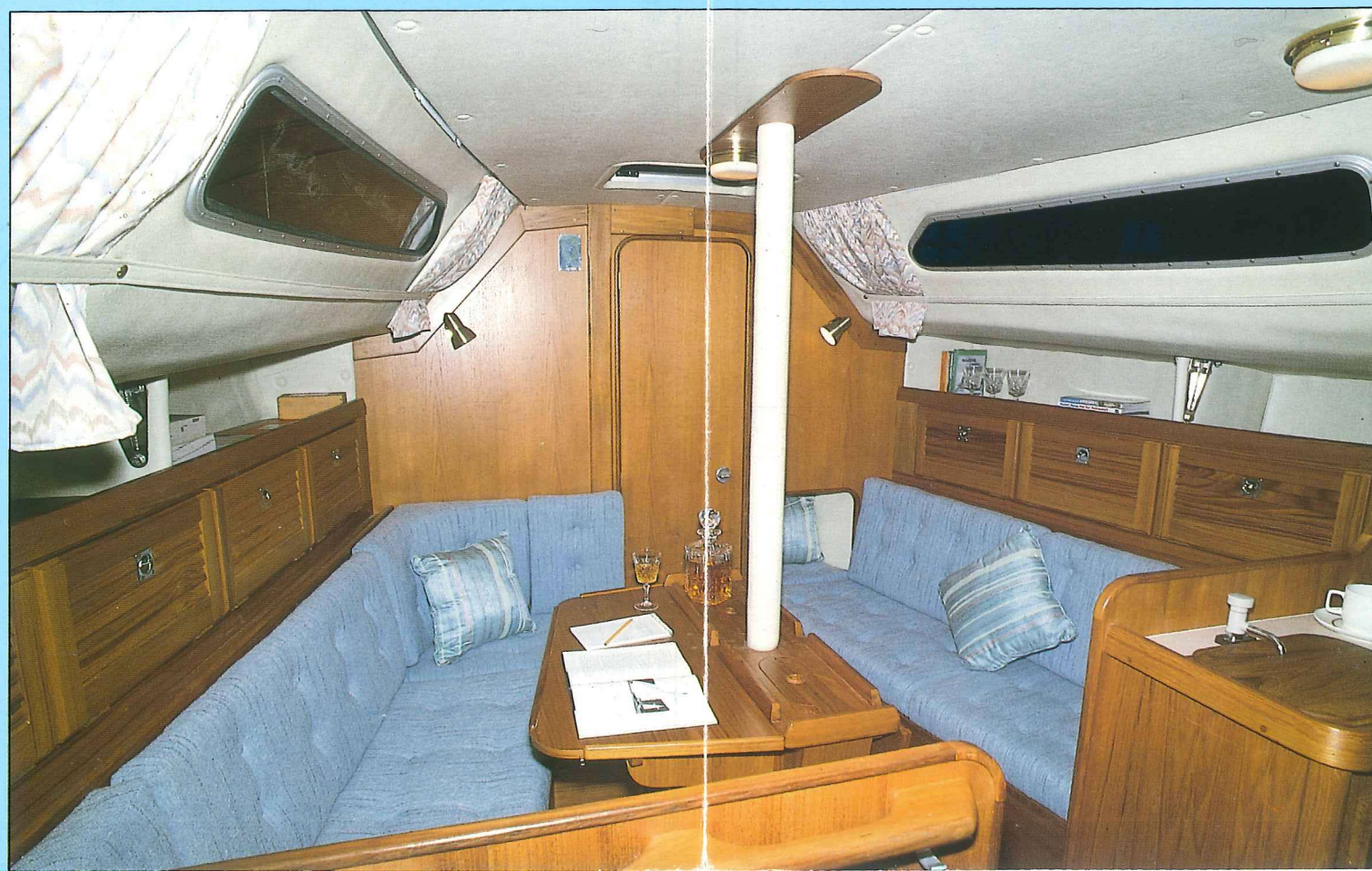
Designing a yacht which manages to outsail most others in its class is a rare accomplishment. Building one which also manages to combine more space and greater comfort than its rivals, is an achievement second to none. Yet the winning team of Ed Dubois, Britain's leading designer and Westerly, Britain's biggest yacht manufacturer, has done exactly that.

The Westerly Tempest 31 promises much, even at rest. The clean, elegant lines flow smoothly over the sleek coachroof to the racing-style transom, hinting at the performance of which she is capable.

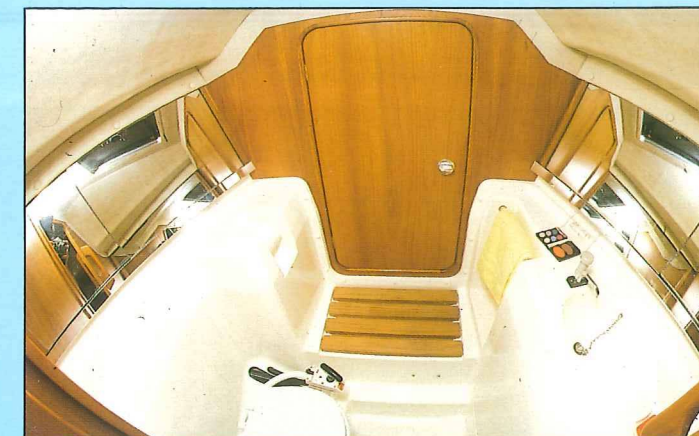
Yet below decks, a surprise awaits. As you slide back the companionway cover, there is a startling impression of space. An impression which is confirmed when you stand and look around the saloon.

Past the teak bulkhead forward is the saloon proper, with a folding table on the centreline, and plenty of space to seat a crew of six on the luxurious fabric-covered sofas.

Behind the seats are craftsman-made lockers, providing ample space for stowage, and there's more underneath.



At the forward end of the holly and teak cabin sole is a full-width teak bulkhead, with a door to the heads.



The heads stretch across the full beam of the Tempest, so there's plenty of room around the washbasin and marine WC, yet the designer hasn't forgotten the all important "wedgeability". There's an opening deck hatch, and access to the forward sail and extra storage room.

Back in the main saloon, the superbly fitted galley is to starboard. Teak fiddles surround the worktop, there's a drained insulated icebox and a gimbaled two burner cooker with oven, grill and crash bar. It's fitted out to be ready for anything, from a fresh lobster in a foreign anchorage to a hot soup in the middle of the night.

To port is the navigation area, with a pull-out swivel seat and plenty of storage space for charts and the other paraphernalia that goes with the job. There's a panel for instruments, and the circuit breaker is to hand.

As you stand facing forward in the saloon, one of the secrets of the success of the design is behind you: two spacious, luxuriously appointed double aft cabins.

By arranging the twin aft cabins under the cockpit, Ed Dubois has managed to use all the available space to the best advantage, making the Tempest genuinely more comfortable to live aboard than other yachts in the class.

